

# Tigercat®

## 480 MULCHER



**The 480 is a 370 kW (500 hp) track driven mulcher carrier well suited to tough terrain and large scale and time-sensitive land clearing and right-of-way projects.**

### **BENEFITS AND ADVANTAGES:**

#### **Tigercat build quality for full-time forest duty cycle**

##### **Efficient, high capacity cooling system**

- Automatic variable pitch for improved fuel economy
- Reversing cycle combats airborne dust and debris

##### **Oscillating track system with heavy duty track frames and mounting system**

- Long track frames for low ground pressure

##### **Efficient, responsive closed loop track drive system**

##### **High-lift boom geometry**

- Maintains productivity in uneven and sloped terrain

##### **Quiet, climate controlled operator's station**

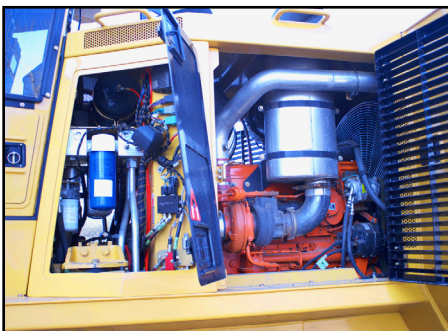
- Insulated and isolation mounted; high output heater and A/C
- Extreme duty air ride seat
- CRF counter rotate function for one touch 'on a dime' turns
- Ergonomic armrest mounted joystick steer and drive

##### **Excellent performance in challenging terrain**

##### **Choice of horizontal drum type mulching attachments requiring up to 328 kW (440 hp)**

##### **Excellent access to daily service points**

- Tilting cab for additional access to components



*Excellent access to daily service points, engine and hydraulic filters*



*High lift boom system for excellent production in challenging terrain*



*Built for demanding applications and extreme duty cycles*

# SPECIFICATIONS

## DIMENSIONS with standard equipment, full fuel, less attachment

LENGTH .....	5 690 mm (224 in)
GROUND CLEARANCE .....	535 mm (21 in)
HEIGHT .....	3 300 mm (130 in)
WIDTH .....	2 590 mm (102 in)
WEIGHT .....	19 450 kg (42,880 lb)
GROUND PRESSURE .....	31,7 kPa (4.6 psi), 75 mm (3 in) penetration

## POWER

ENGINE .....	Cummins QSX15 Tier III 373 kW (500 hp) @ 1,800 rpm Precleaner and 2-stage air cleaner
PEAK TORQUE .....	2 363 Nm (1,743 lbf-ft) @ 1,400 rpm
COOLING .....	Aluminum side-by-side radiator, oil cooler, charge air cooler and A/C condenser Swing-out intake debris screen
FAN .....	Flexxaire® automatic variable pitch, reversible
FUEL CAPACITY .....	850 L (225 US gal)

## TOP SPEED

FORWARD/REVERSE .....	7 km/h (4.25 mph)
-----------------------	-------------------

## HYDRAULIC SYSTEM

PUMP, ATTACHMENT .....	Piston
PUMP, TRACK .....	(2) Piston, closed loop
PUMP, BOOM .....	Piston
RESERVOIR .....	288 L (76 US gal)
FILTRATION .....	(8) spin-on, 7 micron full flow
CYLINDERS, BOOM .....	(4) 115 mm (4.5 in) bore

## UNDERCARRIAGE

TRACK FRAMES .....	D5 heavy-duty forestry Integral track guides, ramp angles, oscillation
TRACK CHAIN .....	D5 190 mm (7.5 in) pitch sealed and greased
FINAL DRIVE .....	(2) Axial piston motors; Infinitely variable speed
TRACTIVE EFFORT .....	214 kN (48,000 lbf)
GEARBOX .....	Triple reduction planetary with brake
FRONT IDLER .....	Hydraulic track adjuster; Spring shock absorber
ROLLERS, UPPER .....	(3) D5 single flange excavator type
ROLLERS, LOWER .....	(9) D5 single flange excavator type
TRACK SHOE .....	800 mm (31.5 in) triple grouser Optional .....
	800 mm (31.5 in) single grouser 800 mm (31.5 in) double grouser 915 mm (36 in) triple grouser tri-track 915 mm (36 in) double grouser tri-track

## BRAKES

TRACK .....	Friction disc Automatic spring applied, hydraulic release
-------------	--

## OPERATOR'S STATION

CAB .....	Fully enclosed, insulated and isolation mounted (2) doors and roof exit Air conditioner heater and pressurizer Polycarbonate front and rear glazing Forward sloping windshield Sliding tempered glass side windows Side door screens, hinged AM/FM CD stereo
SEAT .....	Extreme duty air ride, fully adjustable Armrest mounted joysticks

## OPERATOR CONTROLS

Electronic for travel/steering/boom, joystick control
Electronic travel speed control limiter; Cruise control; Counter rotate function (CRF)
IQAN MD3 colour display for machine monitoring and function adjustment

## ELECTRICAL

BATTERY .....	(4) 12 v
ALTERNATOR .....	110 amp, 24 v
SYSTEM VOLTAGE .....	24 v

## OTHER STANDARD EQUIPMENT

Extreme duty air ride seat; Back-up alarm; Rear camera
Hydraulic reservoir hand fill pump; Fire extinguisher; Air compressor
Halogen service lights; HID cab mounted working lights

## OPTIONAL EQUIPMENT

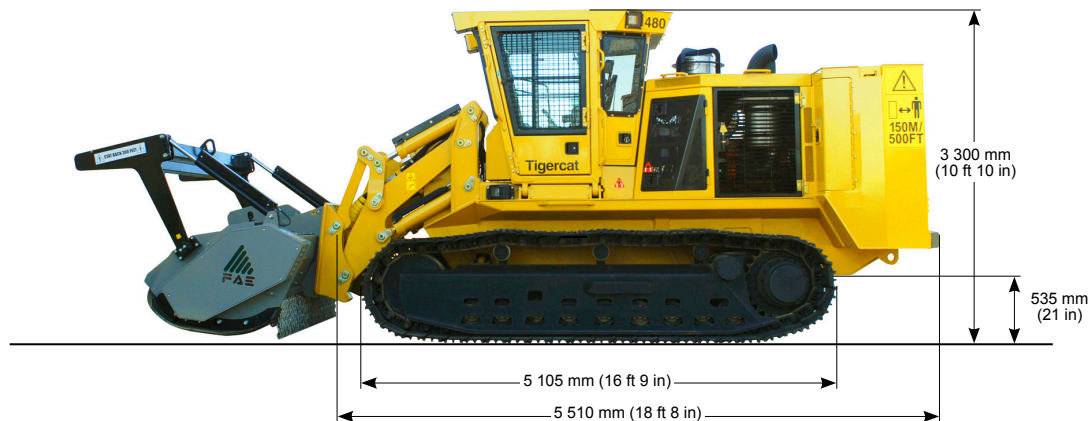
Recovery winch; Ground level fueling system; CB radio; Fire detection
Cold weather aids (110 VAC or diesel powered)
HID lower front mounted working lights

## MULCHING HEAD

Flexible hydraulic system
Choice of horizontal drum type mulching attachments requiring up to 440 hp

TIGERCAT RESERVES THE RIGHT TO AMEND THESE SPECIFICATIONS AT ANY TIME WITHOUT NOTICE

## TIGERCAT 480 MULCHER



54 Morton Ave. East  
Brantford, Ontario  
Canada, N3R 7J7  
Mail: Box 637 N3T 5P9

(7039) 5 0114•Tig

E-mail: [comments@tigercat.com](mailto:comments@tigercat.com)  
Internet: [www.tigercat.com](http://www.tigercat.com)  
Tel: (519) 753-2000  
Fax: (519) 753-8272

**Tigercat**®