



The 845C is an excellent, all-around feller buncher limited tail-swing and tight-tuck boom geometry. It is well suited to plantations, natural stands and small diameter - high cycle applications. With excellent balance and stability, the L845C excels on steep slopes.

BENEFITS AND ADVANTAGES:

Powerful, efficient Tier 3 engine

Efficient high-capacity cooling system

- Automatic variable fan speed for improved fuel efficiency
- Automatic reversing cycle to clean the heat exchangers
- Rear cooling air intake, well away from saw discharge area

ER boom technology

- ER technology increases production, conserves energy
- Smooth planar boom motion reduces operator fatigue
- ER control switch provides a boost for extra stick force
- Structural parts are well proven in high cycle applications

Separate compartments for engine and hydraulic components

- Shields separate engine from hydraulic pumps and valves

Tigercat built forest duty undercarriages

- Long frames and wide stance carbody for excellent stability

Super-duty leveling system

- Large pins and roller bearings eliminate wear in pivot joints
- Frames are built with thick steel sections to minimize flex
- Field-proven in over 1,000,000 hours of operation

Excellent service access

- Power operated clamshell style engine enclosure
- Easy access to all sides of the engine
- Excellent access to major components, daily service points

Quiet, climate controlled operator's station

- Industry leading cab with front and side doors
- Full length front window for a clear view of the tracks
- High output heater/air conditioner with multiple vents
- Extreme duty air-ride suspension seat

Durable upper turntable frame construction

- One piece 32 mm (1.25 in) thick turntable base plate
- Upper assembly will not dent or deform from impacts
- Generous storage space behind the seat

DIMENSIONS with 610 mm (24 in) double grouser shoes

WIDTH.....	3 380 mm (133 in).....	3 430 mm (135 in)
LENGTH less boom.....	4 900 mm (193 in).....	4 900 mm (193 in)
HEIGHT less skylight.....	3 360 mm (132 in).....	3 730 mm (147 in)
GROUND CLEARANCE.....	710 mm (28 in).....	685 mm (27 in)
WEIGHT less head.....	25 900 kg (57,100 lb).....	32 480 kg (71,600 lb)
TAIL SWING over side.....	990 mm (39 in).....	1 040 mm (41 in)

POWER

ENGINE.....	Cummins QSB6.7 Tier 3, 194 kW (260 hp) @ 2,200 rpm.....	Cummins QSB6.7 Tier 3, 194 kW (260 hp) @ 2,200 rpm
	Precleaner and 2-stage engine air cleaner	Precleaner and 2-stage engine air cleaner
COOLING.....	Aluminum side by side radiator, oil cooler, charge air cooler.....	Aluminum side by side radiator, oil cooler, charge air cooler
	Removable intake debris screen	Removable intake debris screen
FAN.....	Hydraulically driven, automatic variable speed, reversible.....	Hydraulically driven, automatic variable speed, reversible
FUEL CAPACITY.....	970 L (257 US gal).....	970 L (257 US gal)

HYDRAULIC SYSTEM

PUMP, MAIN.....	Piston.....	Piston
PUMP, SAW.....	Piston.....	Piston
PUMP, CLAMP/ACCUM. ARMS.....	Piston.....	Piston
PUMP, COOLING FAN.....	Piston.....	Piston
RESERVOIR.....	190 L (50 US gal).....	190 L (50 US gal)
FILTRATION.....	(5) Spin-on, 7 micron full flow; (1) Water absorbing.....	(5) Spin-on, 7 micron full flow; (1) Water absorbing
CYLINDER, HOIST.....	140 mm (5.5 in) bore.....	140 mm (5.5 in) bore
CYLINDERS, STICK/ER.....	(2) 110 mm (4.3 in) bore.....	(2) 110 mm (4.3 in) bore
CYLINDER, TILT.....	120 mm (4.7 in) bore.....	120 mm (4.7 in) bore
CYLINDERS, LEVELING.....	N/A.....	(2) 180 mm (7 in) bore
HORSE POWER CONTROL.....	Electronic speed sensing; All-speed antistall.....	Electronic speed sensing; All-speed antistall

UNDERCARRIAGE

TRACK FRAMES.....	R6-140-3 heavy-duty forestry; Integral track guides, ramp angles.....	R7-150L-2 super-duty leveling; Integral track guides, ramp angles
TRACK CHAIN.....	F8/D6D 203 mm (8 in) pitch sealed and greased.....	FH400 215 mm (8.5 in) pitch
FINAL DRIVE.....	(2) Axial piston motors with brakes valves.....	(2) Axial piston motors with brakes valves
	Infinitely variable speed; Infinitely variable speed	Infinitely variable speed; Infinitely variable speed
TRACTIVE EFFORT.....	262 kN (59,000 lbf).....	367 kN (82,600 lbf)
GEARBOX.....	Triple reduction planetary type with brake.....	Triple reduction planetary type with brake
FRONT IDLER.....	Hydraulic track adjuster; Spring shock absorber.....	Hydraulic track adjuster; Spring shock absorber
SLIDES, UPPER.....	Replaceable, bolt-on; Optional rollers.....	Replaceable, bolt-on
ROLLERS, LOWER.....	(9) D6 single and double flange tractor type.....	(9) FH400 single/double flange excavator type
TRACK SHOE.....	610 mm (24 in) single/double grouser.....	610 mm (24 in) single grouser
Optional.....	710 mm (28 in) single grouser tri-track.....	710 mm (28 in) single grouser
	760 mm (30 in) double grouser tri-track	
	915 mm (36 in) triple grouser tri-track	
LEVELING.....	N/A.....	20° forward; 6° rear; +/-17° side

TOP SPEED

LOW RANGE.....	1,9 km/h (1.2 mph).....	1,8 km/h (1.1 mph)
HIGH RANGE.....	4,2 km/h (2.6 mph).....	4,2 km/h (2.6 mph)

BRAKES

TRACK.....	Friction disc; Automatic spring applied, hydraulic release.....	Friction disc; Automatic spring applied, hydraulic release
SWING.....	Friction disc; Manual spring applied, hydraulic release.....	Friction disc; Manual spring applied, hydraulic release

ROTATING UPPER

SWING DRIVE.....	7 rpm variable speed; 360° continuous rotation; Double reduction, swing drive planetary gearbox with brake; Piston swing motor
SWING BEARING.....	1 190 mm (47 in) ball circle diameter
ENCLOSURE.....	Hydraulically operated, retracting roof; Hinged access doors for engine and pump stack; Rear air intake for cooling system and engine

ER BOOM SYSTEM with 5702 saw; 30° wrist

MAXIMUM CUT RADIUS.....	8 050 mm (317 in).....	8 050 mm (317 in)
MINIMUM CUT RADIUS.....	4 165 mm (164 in).....	4 165 mm (164 in)
BARE PIN LIFT full reach.....	6 215 kg (13,700 lb).....	6 215 kg (13,700 lb)

OPERATOR'S STATION

CAB.....	Insulated, pressurized, solation mounted; A/C, heater, defroster with side-mount controls; Skylight or flat hatch
	Full length polycarbonate windshield/entry door Polycarbonate right-side and rear windows; Tempered glass side door window
	High visibility machine monitoring system with warning horns; AM/FM digital stereo with CD player; (2) Power points
CONTROLS.....	Hydraulic proportional for boom/travel/swing with electronic travel speed control limiter
	Electronic for clamp/accumulating arms/wrist/leveling; Electric switch for swing brake
	IQAN MD3 colour display for machine monitoring and function adjustment
SEAT.....	Full suspension air ride, fully adjustable with angled mounting; Armrest mounted Tigercat joysticks

ELECTRICAL

BATTERY	(2) 12 v	(2) 12 v
ALTERNATOR	140 amp, 24 v	140 amp, 24 v
SYSTEM VOLTAGE	24 v	24 v
LIGHTING	(9) Halogen; (3) Service, engine enclosure	(9) Halogen; (3) Service, engine enclosure
Optional	(7) HID; (1) Halogen; (3) Service, engine enclosure	(7) HID; (1) Halogen; (3) Service, engine enclosure

OTHER STANDARD EQUIPMENT

Power-link; Fuel suction strainer; Alarm for track movement.....Power-link; Fuel suction strainer; Alarm for track movement; Toolbox

OPTIONAL EQUIPMENT

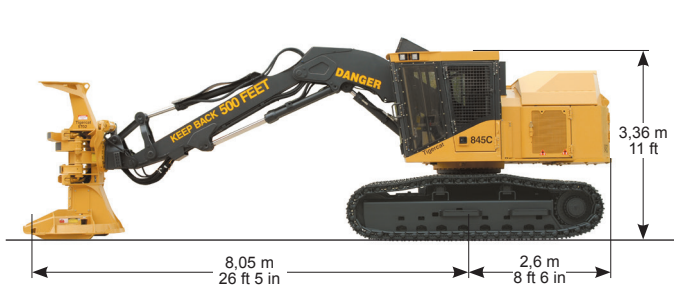
Various counterweights; High rotation wrists: 110°, 340°; Cold weather kit; Bolt-on toolbox.....Cold weather kit; High rotation wrists: 110°, 340°
 Ground level fueling system; R6-140-5, R6-152 undercarriages; High-flow fuel filter.....Ground level fueling system; High-flow fuel filter

FELLING HEAD

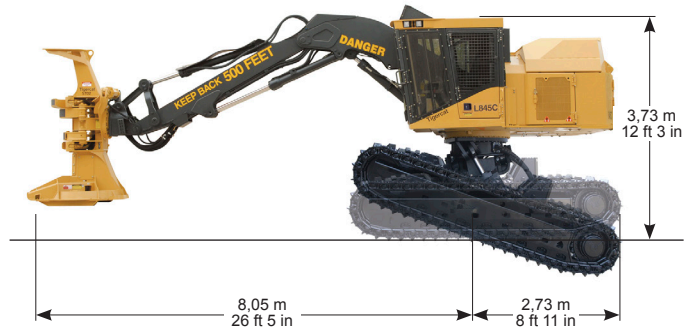
Flexible hydraulic system to accept various felling heads.....Flexible hydraulic system to accept various felling heads

TIGERCAT RESERVES THE RIGHT TO AMEND THESE SPECIFICATIONS AT ANY TIME WITHOUT NOTICE

845C FELLER BUNCHER



L845C FELLER BUNCHER



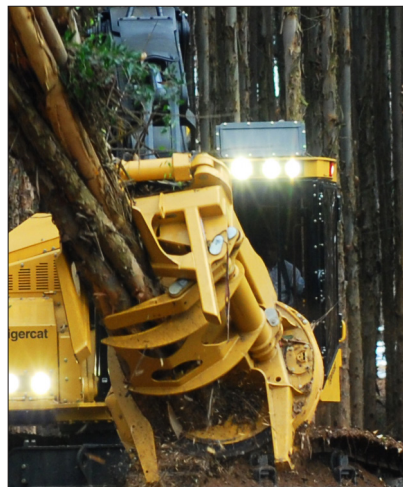
High speed, high performance, high efficiency. Tigercat's patented ER technology allows the machine operator to extend and retract the boom on a horizontal plane smoothly and quickly using a single joystick. But the benefit goes beyond reducing operator fatigue.

Key to ER technology is reduced energy consumption. The ER system transfers energy back and forth between the main and the stick boom functions, reducing the total energy required to move the boom system. This reduces demands for power, pump flow and system cooling. The result is increased productivity and reduced fuel consumption per unit of production.



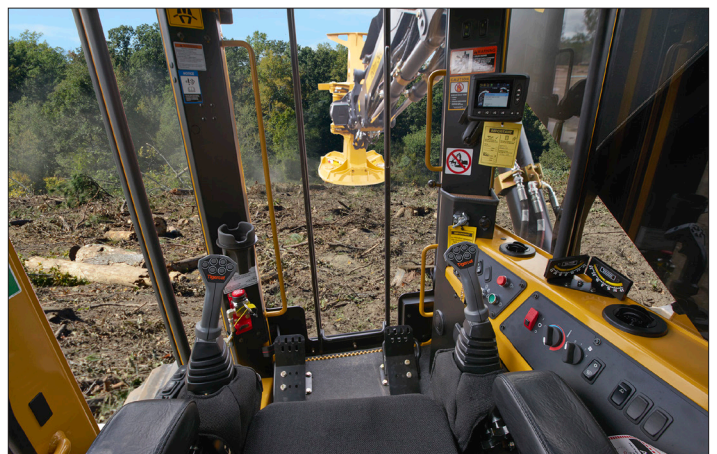
Tigercat felling attachments

Tigercat's range of felling attachments, including the 'big wood' 5702 felling saw and the high capacity bunching saws and shears allow you to customize the feller buncher to your specific requirements. Choosing the right Tigercat felling head can potentially reduce cost and boost the productivity of the entire harvesting system. Visit www.tigercat.com for more information or contact a Tigercat sales specialist at your nearest Tigercat dealer.



The operating environment

Floor to ceiling front window and large side windows for unparalleled sight lines and a clear view of the tracks. Ergonomic controls reduce fatigue and increase productivity.





The ER boom is fast and efficient, improving fuel efficiency and productivity especially in high cycle, small diameter timber applications.

Heavy duty leveling system constructed with thick steel plate, large pins and cylinders and tapered roller bearings. Long track frames and a wide stance provide the operator with excellent balance and stability on slopes.



The pumps are housed in a separate compartment and accessed through a swing-out door or a fully opening roof enclosure that forms a working platform.



Clear sight line to the right side.



Easy access to daily engine service points.



Clamshell style retracting roof enclosure.

© 2001 - 2015 Tigercat International Inc. All Rights Reserved. TIGERCAT, WIDERANGE, TURNAROUND, ER, EHS, and TEC, their respective logos, TOUGH RELIABLE PRODUCTIVE, TIGERCAT TV, "Tigercat Orange" and BETWEEN THE BRANCHES, as well as corporate and product identity, are trademarks of Tigercat International Inc., and may not be used without permission. TIGERCAT, TURNAROUND, and ER, and their respective logos are registered trademarks of Tigercat International Inc.

54 Morton Ave. East
 Brantford, Ontario
 Canada, N3R 7J7
 Mail: Box 637 N3T 5P9

E-mail: comments@tigercat.com
 Internet: www.tigercat.com
 Tel: (519) 753-2000
 Fax: (519) 753-8272

(7020) 8 0215-Tig

Tigercat[®]