



The 234B series loaders are an excellent choice on the deck or in the mill yard. The 234B and T234B are designed and built for high production logging operations and high duty cycle delimbing.

## BENEFITS AND ADVANTAGES:

### Quiet, efficient, Tigercat FPT Tier 4f engine

- Perfectly matched to the 234B duty cycle
- Simple, reliable SCR emission control technology
- High performance with low fuel and DEF consumption

### Efficient load sensing hydraulic system

- Extremely fuel efficient for reduced cost per tonne

### Dedicated, energy recovery swing system

- Closed loop drive feeds power back to the engine when swing decelerates, reducing fuel consumption and recovering energy for other machine functions
- Dedicated swing system for quick cycles and enhanced machine performance in delimbing applications

### High capacity swing system

- Large diameter, high capacity bearing
- High torque starts and smooth stops

### Heavy duty strength-to-weight optimized boom

- Robust, well-protected cylinders and large diameter pins
- Designed for heavy lifting and high duty cycle delimbing

### Wide stance, forest duty undercarriage, T234B

- Long track frames for rock solid stability and high flotation
- High clearance carbody and powerful tractive effort for excellent infield mobility
- Designed and built by Tigercat for full forest duty cycles

### Rigid, fabricated subframe, 234B

- Generously sized for excellent stability

### Optional AC16 articulating carrier

- Powerful tractive effort and towing capacity for demanding mill yard applications

### Excellent service access

- Valves are conveniently located under the walk-up platform
- Platform access to engine and daily service points
- Swing-out door to access hydraulic pumps and filters

### Spacious, ergonomic operator's station

- Very quiet operating environment (64 - 68 dB)
- Excellent climate control, heated/cooled seats, window blinds
- High visibility instrumentation and engine monitoring system



*Tigercat FPT emission technology is simple and reliable, meeting Tier 4 emission standards without the complexities of a variable geometry turbocharger, EGR system, intake throttle body or diesel particulate filter. The key is the patented selective catalyst reduction (SCR) system. Tigercat FPT engines offer improved reliability and lower long-term maintenance costs.*

**TIGERCATPOWER.**  
**TIGERCATSUPPORT.**

# SPECIFICATIONS

# 234B

# T234B

## DIMENSIONS

LENGTH	4 900 mm (193 in)
WIDTH	2 590 mm (102 in)
HEIGHT	3 530 mm (139 in)
With cab tilted for transport	N/A
GROUND CLEARANCE	N/A
WEIGHT	15 130 kg (33,350 lb)

5 260 mm (207 in)
3 430 mm (135 in)
4 395 mm (173 in)
3 555 mm (140 in)
700 mm (27 in)
24 090 kg (53,100 lb)

## POWER

ENGINE	Tigercat FPT N45 Tier 4f 125 kW (168 hp) @ 2,200 rpm Automatic idle down
COOLING	Side-by-side aluminum radiator, oil cooler, charge air cooler and A/C condenser
FAN	Fixed pitch, high flow
Optional	Flexxaire® variable pitch, reversing
FUEL CAPACITY USABLE	378 L (100 US gal)
DEF CAPACITY	43 L (11 US gal)

Tigercat FPT N45 Tier 4f 125 kW (168 hp) @ 2,200 rpm Automatic idle down
Side-by-side aluminum radiator, oil cooler, charge air cooler and A/C condenser
Fixed pitch, high flow
Flexxaire® variable pitch, reversing
378 L (100 US gal)
43 L (11 US gal)

## HYDRAULIC SYSTEM

PUMP, MAIN	Piston
PUMP, SWING	Piston, pressure compensated
FILTRATION	(4) spin-on, 7 micron full-flow
RESERVOIR	200 L (55 US gal)
CYLINDER, HOIST	165 mm (6.5 in) bore
CYLINDER, STICK	140 mm (5.5 in) bore
CYLINDERS, STABILIZER	(4) 165 mm (6.5 in) bore, bolt-on bi-directional lock valves

Piston
Piston, pressure compensated
(4) spin-on, 7 micron full-flow
200 L (55 US gal)
165 mm (6.5 in) bore
140 mm (5.5 in) bore
N/A

## ROTATING UPPER

SWING DRIVE	9 rpm variable, 360° continuous rotation Swing priority and energy recovery 1 190 mm (47 in) ball circle diameter; Internal gear teeth Double reduction planetary gearbox Walk-up platform
SWING BEARING	910 kg (2,000 lb)
ENCLOSURE	N/A
COUNTERWEIGHT	
Optional	

9 rpm variable, 360° continuous rotation Swing priority and energy recovery 1 190 mm (47 in) ball circle diameter; Internal gear teeth Double reduction planetary gearbox Walk-up platform
1 590 kg (3,500 lb)
2 270 kg (5,000 lb)

## SUBFRAME 234B

LENGTH less step	4 290 mm (169 in)
SUPPORT BASE	3 810 mm x 4 650 mm (150 in x 183 in)
STABILIZER PADS	585 mm x 710 mm (23 in x 28 in)

## UNDERCARRIAGE T234B

TRACK FRAMES
TRACK CHAIN
DRIVE
TRACTIVE EFFORT
GEARBOX
FRONT IDLER
ROLLERS, UPPER
Optional
ROLLERS, LOWER
TRACK SHOE
Optional

F6-140 heavy duty forestry; Integral track guides/ramp angles
F8/D6D 203 mm (8 in) pitch sealed and greased
(2) Axial piston motors; Infinitely variable speed
187 kN (42,000 lbf)
Triple reduction planetary type with brake
Hydraulic track adjuster; Spring shock absorber
(2) D6D excavator type
Bolt-on slides
(8) D6 single and double flange tractor type
760 mm (30 in) triple grouser
915 mm (36 in) triple grouser
915 mm (36 in) triple grouser tri-track

## BRAKES

TRACK	N/A
SWING	N/A

Friction disc; Automatic spring applied, hydraulic release
Friction disc; Manual spring applied, hydraulic release

## BOOM

MAXIMUM REACH	9 750 mm (32 ft)
LIFT CAPACITY	14 740 kg (32,500 lb) @ 3,05 m (11 ft) 5 670 kg (12,500 lb) @ 7,6 m (25 ft)

9 750 mm (32 ft)
14 740 kg (32,500 lb) @ 3,05 m (11 ft)
5 670 kg (12,500 lb) @ 7,6 m (25 ft)

## ELECTRICAL

BATTERY	(2) 950 CCA, 12 v
ALTERNATOR	80 amp, 24 v
SYSTEM VOLTAGE	24 v
LIGHTING	Halogen, (2) boom mounted, (3) cab mounted, (1) engine house (1) service, engine house LED lighting package
Optional	

(2) 950 CCA, 12 v
80 amp, 24 v
24 v
Halogen, (2) boom mounted, (3) cab mounted, (1) engine house (1) service, engine house LED lighting package

## OPERATOR'S STATION

CAB	Insulated, pressurized and isolation mounted; Forward sloping, tinted polycarbonate windshield with intermittent wiper; Sliding tinted side windows; Polycarbonate skylight; Window blinds for windshield and skylight; A/C, heater, defroster and pressurizer 3-speed fan; Dome light; Cell phone holder; (2) 12 v power points; CB radio AM/FM digital stereo with CD player and auxiliary input port; Bluetooth® audio and hands-free calling Electronic engine monitoring system with LCD display Heavy duty suspension, fully adjustable, heated and cooled
SEAT	

## SPECIFICATIONS

## 234B

## T234B

### OPERATOR CONTROLS

BOOM	Electronic joystick
Optional	Hydraulic joystick
STABILIZERS	Electric switches
SWING	Pilot valve, foot operated
Optional	Electric valve, foot operated
TRAVEL	N/A

Electronic joystick
Hydraulic joystick
N/A
Electric valve, foot operated
N/A
Pilot valve, foot operated

### OTHER STANDARD EQUIPMENT

Delimber/bar saw slasher hydraulics

760 mm (30 in) cab riser

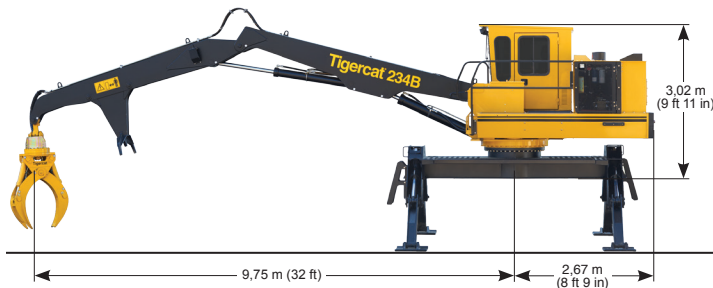
### OPTIONAL EQUIPMENT

Tigercat LG4053, LG5057T grapples, continuous rotation  
Other grapples available; Live Heel  
Grapple saw hydraulics  
Circle saw slasher hydraulics

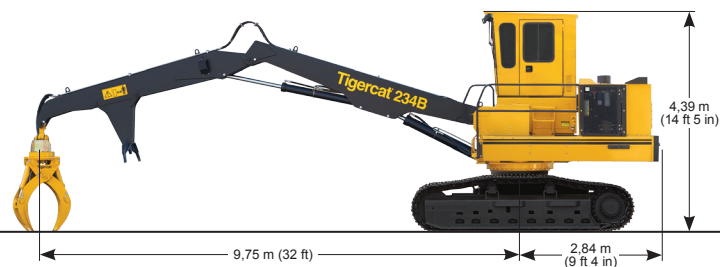
Tigercat LG4053, LG5057T grapples, continuous rotation  
Other grapples available; Live heel  
Grapple saw hydraulics  
Delimber/slasher hydraulics  
Circle saw slasher hydraulics  
1 575 mm (62 in) 'mill yard' cab riser  
F6-152 undercarriage

TIGERCAT RESERVES THE RIGHT TO AMEND THESE SPECIFICATIONS AT ANY TIME WITHOUT NOTICE

## 234B LOADER



## T234B LOADER



### 234B

The 234B can be mounted on a trailer or the AC16 articulating carrier for the deck or the wood yard. With fast, responsive controls and powerful lifting capacity, the 234B is ideal for high production merchandising and loading. The strong boom is designed to withstand the lateral stresses of high duty cycle pull-through delimbing applications.

### T234B

The T234B is a very capable track carrier with high ground clearance, powerful tractive effort and excellent stability. The undercarriage is designed and built for full forest duty. Efficient hydraulics provide low cost per tonne operation in loading applications where high mobility is required.

### AC16 carrier

The AC16 articulating carrier is designed and built by Tigercat for mill yard duty applications.

With forest duty axles and powerful tractive effort, the four-wheel drive AC16 handles tough terrain and towing applications with ease.

Optional integrated bunks are also available.







*A quiet, spacious, ergonomic operating environment ensures that the operator concentrates full attention on the essential tasks of merchandising and loading.*



*Tigercat-built full forest duty undercarriage with powerful tractive effort for excellent mobility in tough terrain. Long track frames and wide stance for comfort and stability.*



*Convenient platform access to the engine and daily service points. The compartment is neat and spacious.*



*All valves are located underneath the walk-up platform for clear and easy access with neat hydraulic and electrical routings.*

© 2001 - 2015 Tigercat International Inc. All Rights Reserved. TIGERCAT, WIDERANGE, TURNAROUND, ER, EHS, and TEC, their respective logos, TOUGH RELIABLE PRODUCTIVE, TIGERCAT TV, "Tigercat Orange" and BETWEEN THE BRANCHES, as well as corporate and product identity, are trademarks of Tigercat International Inc., and may not be used without permission. TIGERCAT, TURNAROUND, and ER, and their respective logos are registered trademarks of Tigercat International Inc.

54 Morton Ave. East  
Brantford, Ontario  
Canada, N3R 7J7  
Mail: Box 637 N3T 5P9

(7068) 2 0615•Tig

E-mail: [comments@tigercat.com](mailto:comments@tigercat.com)  
Internet: [www.tigercat.com](http://www.tigercat.com)  
Tel: (519) 753-2000  
Fax: (519) 753-8272

**Tigercat®**