



The Tigercat 610E skidder leads its class in agility, durability and performance. A powerful, high production skidder. the 610E is also ideal in tight spaces, soft soil conditions and selective logging. Excellent cab ergonomics, clear operator sight lines and painless maintenance routines make Tigercat skidders a top choice among operators.

BENEFITS AND ADVANTAGES:

Powerful, efficient Tigercat FPT Tier 4f engine

- Simple, reliable SCR emission control technology
- Automatic variable engine speed for high fuel efficiency
- Operator controlled maximum speed setting

EHS 'efficient high speed' hydrostatic drive

- Extremely efficient driveline with electronic control system
- Capable of high speeds in forward and reverse
- High performance, minimal wheel spin in adverse terrain

Advanced electronic control system

- Intuitive user interface and better fuel economy
- Provides precise control of all machine functions

High capacity cooling system

- Automatic variable pitch fan for reduced fuel consumption in cold climates
- Reversing airflow to keep the heat exchangers clean

Durable, reliable Tigercat axles

Designed and built for extreme duty

- Strength optimized frames
- Strong, long-life centre section constructed with thick steel plate, oversized pins and tapered roller bearings

Excellent service access

- Neat, compact engine enclosure
- Easy access to daily service points
- Tilt cab for access to pumps, motors and driveline

Turnaround equipped operator's station

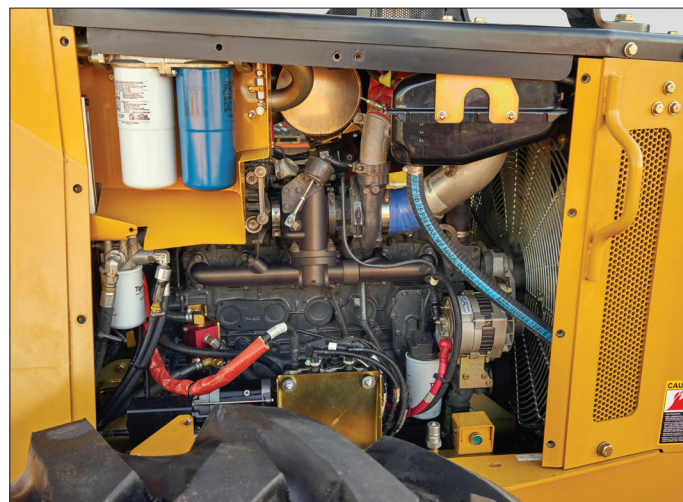
- Two-position Turnaround seat with ergonomic joystick steering and full rear-facing drive controls
- Grapple and arch functions controlled by one joystick
- Excellent visibility to the sides of the engine house

Large capacity Tigercat dual cylinder grapples

- Choice of plate or box tongs
- Widest tip-to-tip openings in each size class to quickly gather scattered bunches



Strong centre section with large pins and tapered roller bearings.



Neat, clean engine compartment with quick access to daily service points.



Well guarded Tigercat axles.



Convenient access to all service points promotes better machine maintenance routines.

Excellent layout with easy access to all major components.

Tilting cab to access pumps and driveline

Clean routing for hoses and wires.



Comfortable seating position when travelling grapple-forward or gathering a bunch. Rotating seat with joystick steering. Better ergonomics and reduced neck strain.

TURNaround®

Tigercat's exclusive Turnaround seat provides full rear-facing machine control.

Drive comfortably and operate all machine functions with optimal visibility whether travelling blade-forward or grapple-forward.

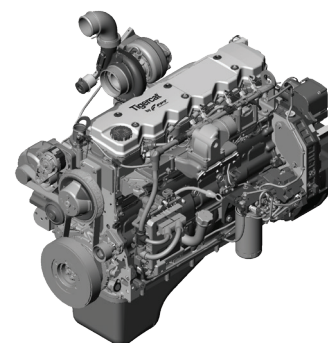
Quicker cycles, reduced fuel consumption, improved decking capabilities and added versatility.



Tigercat®

by **FPT**
POWERTRAIN TECHNOLOGIES

Tigercat FPT emission technology is simple and reliable, meeting Tier 4 emission standards without the complexities of a variable geometry turbocharger, EGR system, intake throttle body or diesel particulate filter. The key is the patented selective catalyst reduction (SCR) system. Tigercat FPT engines offer improved reliability and lower long-term maintenance costs.



TIGERCATPOWER.
TIGERCATSUPPORT.

EHS™

Speed and tractive effort

EHS is capable of providing the tractive effort of the deepest gear ratio offered in Tigercat's standard transfer case as well as the top speed of the shallowest gear ratio offered in the standard transfer case.

This is accomplished with advanced computer logic and the ability to take one of the drive motors offline when high tractive effort is not required. In this case all pump flow is directed to one hydraulic motor, increasing both travel speed and motor efficiency.

When operating conditions demand high tractive effort, both hydrostatic motors are working. When tractive effort requirements are reduced -- for instance, when traveling empty or loaded on flat terrain -- all of the pump flow is directed to one motor for higher travel speeds.

High capacity dual cylinder grapples and high visibility arch.



SPECIFICATIONS

DIMENSIONS with standard tires and arch

LENGTH.....	6 985 mm (275 in)
WHEELBASE.....	3 935 mm (155 in)
WIDTH.....	3 330 mm (131 in)
Narrow offset.....	3 020 mm (119 in)
HEIGHT.....	3 150 mm (124 in)
GROUND CLEARANCE.....	635 mm (25 in)
WEIGHT.....	15 875 kg (35,000 lb)

POWER

ENGINE.....	Tigercat FPT N67 Tier 4f 153 kW (205 hp) @ 2,200 rpm Precleaner and 2-stage engine air cleaner
TOP SPEED.....	21 km/h (13 mph)
COOLING.....	Side-by-side aluminum radiator, oil cooler, charge air cooler and A/C condenser
FAN.....	Fixed pitch, blower Optional..... Flexxaire® variable pitch, reversing
FUEL CAPACITY usable.....	305 L (81 US gal) Optional..... 585 L (155 US gal)
DEF CAPACITY.....	43 L (11 US gal)

POWER TRAIN

TRANSMISSION.....	EHS (efficient high speed) hydrostatic driveline (2) variable displacement motors
AXLE, FRONT.....	Tigercat IB15 wide, inboard planetary, barrel differential; +/-15° oscillation
AXLE, REAR.....	Tigercat IB17, inboard planetary, barrel differential; Fixed
DIFFERENTIAL LOCKS.....	Independent front and rear

HYDRAULIC SYSTEM

PUMP, DRIVE.....	Piston
PUMP, MAIN 1.....	Piston for all machine functions
PUMP, MAIN 2.....	Gear for cooling
FILTRATION.....	(2) spin-on, 7 micron full-flow
CYLINDERS, ARCH.....	(2) 100 mm (4 in) bore (single function) (4) 100 mm (4 in) bore (dual function)
CYLINDERS, STEER.....	(2) 85 mm (3.25 in) bore
CYLINDERS, BLADE.....	(2) 90 mm (3.5 in) bore
RESERVOIR.....	90 L (24 US gal)

BRAKES

DYNAMIC BRAKING.....	Hydrostatic
SECONDARY BRAKES.....	Enclosed, oil cooled
PARK BRAKE.....	Caliper; Spring applied/hydraulic release

TIRES

STANDARD.....	30.5Lx32,20
OPTIONAL.....	24.5x32,16; 28x26,16; 67x34-26,14; 73x44-32,16

ARCH

STANDARD.....	Single function, continuous rotate
OPTIONAL.....	Dual function, continuous rotate

GRAPPLE

STANDARD.....	Tigercat 1,21 m ² (13 ft ²) 2-cylinder, plate or box tong
MAXIMUM OPENING.....	3 250 mm (128 in)
OPTIONAL.....	Tigercat 1,39 m ² (15 ft ²) 2-cylinder, plate or box tong
MAXIMUM OPENING.....	3 505 mm (138 in)

BLADE

WIDTH.....	2 285 mm (90 in)
with optional extensions.....	2 920 mm (115 in)

ELECTRICAL

BATTERY.....	(2) 12 v
ALTERNATOR.....	80 amp, 24 v
SYSTEM VOLTAGE.....	24 v

OPERATOR'S STATION

CAB.....	Insulated, pressurized and isolation mounted; Air conditioner/heater/defroster; (2) doors with slide side windows and hinged screens; Forward sloping windshield; Machine monitoring system with LCD display; AM/FM digital stereo CD, CB radio
SEAT.....	Extreme duty Turnaround, air ride; Fully adjustable height, seat back recline, lumbar support and armrests; 2-position mechanical lock, 100° rotating for rear-facing drive
OPERATOR CONTROLS.....	Electronic; joystick for arch/grapple/blade/steering; Electronic, foot pedal, front and rear with forward/ reverse selector switch for drive; IQAN MD3 colour display for machine monitoring and function adjustment

OTHER STANDARD EQUIPMENT..... Alarm for reverse drive; Fuel suction strainer;
Fire extinguisher; Pressurized water system;
Fenders

OPTIONAL EQUIPMENT..... Hydraulic winch; Halogen lighting package;
HID lighting package; Cold weather kit

TIGERCAT RESERVES THE RIGHT TO AMEND THESE SPECIFICATIONS AT ANY TIME WITHOUT NOTICE

TIGERCAT 610E SKIDDER



© 2001 - 2014 Tigercat International Inc. All Rights Reserved. TIGERCAT, WIDERANGE, TURNAROUND, ER, EHS, and TEC, their respective logos, TOUGH RELIABLE PRODUCTIVE, TIGERCAT TV, "Tigercat Orange" and BETWEEN THE BRANCHES, as well as corporate and product identity, are trademarks of Tigercat International Inc., and may not be used without permission. TIGERCAT, TURNAROUND, and ER, and their respective logos are registered trademarks of Tigercat International Inc.

54 Morton Ave. East
Brantford, Ontario
Canada, N3R 7J7
Mail: Box 637 N3T 5P9
(7070) 1 0315•Tig

E-mail: comments@tigercat.com
Internet: www.tigercat.com
Tel: (519) 753-2000
Fax: (519) 753-8272

Tigercat®