

# 250D/T250D LOADERS



The 250D series loaders are an excellent choice on the deck or in the mill yard. The 250D and T250D are designed and built for high production logging operations, heavy timber and tough duty cycle delimbing applications.

## BENEFITS AND ADVANTAGES:

### Powerful and efficient Tigercat FPT Tier 4i engine

- Extremely quiet and fuel efficient
- Simple, reliable SCR emission control technology

### Efficient load sensing hydraulic system

### Dedicated, energy recovery swing system

- Closed loop drive feeds power back to the engine when swing decelerates, reducing fuel consumption and recovering energy for other machine functions
- Dedicated swing system for quick cycles and enhanced machine performance in delimbing applications

### High capacity swing system

- Large diameter, high capacity bearing
- High torque starts and smooth stops

### Optional SuperDuty (SD) package, T250D

- Larger F6-155 undercarriage and long reach 11 m (36 ft) boom for mill yard applications

### Optional AC16 articulating carrier, 250D

### Heavy duty strength-to-weight optimized boom

- Robust, well-protected cylinders and large diameter pins
- Designed for heavy lifting and high duty cycle delimbing

### Wide stance, forest duty undercarriage, T250D

- Long track frames for excellent stability and flotation
- High clearance carbody and powerful tractive effort for excellent infield mobility
- Designed and built by Tigercat for full forest duty cycles

### Rigid, fabricated subframe, 250D

- Generously sized for excellent stability

### Excellent service access

- Valves are conveniently located under the walk-up platform
- Platform access to daily service points
- Swing-out door to access hydraulic pumps and filters

### Large spacious, well finished operator's station

- Very quiet operating environment with excellent climate control and tinted windows
- High visibility instrumentation and engine monitoring system



# SPECIFICATIONS

# 250D

# T250D

## DIMENSIONS

LENGTH less boom and steps .....	5 080 mm (200 in)	5 260 mm (207 in)
WIDTH .....	2 590 mm (102 in)	3 430 mm (135 in)
HEIGHT .....	3 450 mm (136 in)	4 320 mm (170 in)
With cab tilted for transport .....	N/A	3 530 mm (139 in)
GROUND CLEARANCE .....	N/A	760 mm (30 in)
WEIGHT less grapple .....	17 010 kg (37,500 lb)	25 445 kg (56,100 lb)

## POWER

ENGINE .....	Tigercat FPT N67 Tier 4i, 160 kW (215 hp) @ 1800 rpm	Tigercat FPT N67 Tier 4i, 160 kW (215 hp) @ 1800 rpm
FUEL CAPACITY .....	Automatic idle down	Automatic idle down
	300 L (80 US gal)	300 L (80 US gal)
COOLING .....	Aluminum side-by-side radiator, oil cooler and charge air cooler; High flow fan	Aluminum side-by-side radiator, oil cooler and charge air cooler; High flow fan

## HYDRAULIC SYSTEM

Piston .....	Piston	Piston
PUMP, MAIN .....	Piston, pressure compensated	Piston, pressure compensated
PUMP, SWING .....	200 L (55 US gal)	200 L (55 US gal)
RESERVOIR .....	(4) Spin-on, 7 micron full-flow	(4) spin-on, 7 micron full-flow
FILTRATION .....	178 mm (7 in) diameter	178 mm (7 in) diameter
CYLINDER, HOIST .....	152 mm (6 in) diameter	152 mm (6 in) diameter
CYLINDER, STICK .....	(4) 165 mm (6.5 in) diameter	N/A
CYLINDERS, STABILIZER .....		

## ROTATING UPPER

8 rpm variable, 360° continuous rotation .....	8 rpm variable, 360° continuous rotation	8 rpm variable, 360° continuous rotation
SWING DRIVE .....	Swing priority and energy recovery	Swing priority and energy recovery
SWING BEARING .....	1 190 mm (47 in) ball circle diameter; Internal gear teeth	1 190 mm (47 in) ball circle diameter; Internal gear teeth;
	Double reduction planetary gearbox	Double reduction planetary gearbox
	Walk-up platform	Walk-up platform
	N/A	2 950 kg (6,500 lb)
COUNTERWEIGHT .....	N/A	3 630 kg (8,000 lb); 4 535 kg (10,000 lb)
Optional .....		

## SUBFRAME, 250D

4 290 mm (169 in)	
LENGTH less steps .....	3 810 mm x 4 650 mm (150 in x 183 in)
SUPPORT BASE .....	Bolt-on bi-directional lock valves
STABILIZER PADS .....	585 mm x 710 mm (23 in x 28 in)

## UNDERCARRIAGE, T250D

TRACK FRAMES .....	F6-140 heavy duty forestry; Integral track guides/ramp angles
TRACK CHAIN .....	F8/D6D 203 mm (8 in) pitch sealed and greased
DRIVE .....	(2) Axial piston motors; Infinitely variable speed
TRACTIVE EFFORT .....	222 kN (50,000 lbf)
GEARBOX .....	Triple reduction planetary type with brake
FRONT IDLER .....	Hydraulic track adjuster; Spring shock absorber
ROLLERS, UPPER .....	(2) D6D excavator type
Optional .....	Bolt-on slides
ROLLERS, LOWER .....	(8) D6 single and double flange tractor type
TRACK SHOE .....	760 mm (30 in) triple grouser
Optional .....	915 mm (36 in) triple grouser
	915 mm (36 in) triple grouser tri-track

## BRAKES

TRACK .....	N/A	Friction disc; Automatic spring applied, hydraulic release
SWING .....	N/A	Friction disc; Manual spring applied, hydraulic release

## BOOM

9 750 mm (32 ft) .....	9 750 mm (32 ft)	
MAXIMUM REACH .....	15 875 kg (35,000 lb) At 3,35 m (11 ft)	15 875 kg (35,000 lb) @ 3,35 m (11 ft)
LIFT CAPACITY .....	7 075 kg (15,600 lb) At 7,62 m (25 ft)	7 075 kg (15,600 lb) @ 7,62 m (25 ft)
	N/A	11 000 mm (36 ft)
MAXIMUM REACH, SD package .....	N/A	9 980 kg (22,000 lb) @ 4,57 m (15 ft) reach
LIFT CAPACITY, SD package .....		5 445 kg (12,000 lb) @ 7,62 m (25 ft) reach

## ELECTRICAL

(2) 950 CCA, 12v .....	(2) 950 CCA, 12 v	
ALTERNATOR .....	80 amp, 24 v	80 amp
SYSTEM VOLTAGE .....	24 v	24 v
LIGHTING .....	Halogen, (2) boom mounted, (2) cab mounted, (1) service in engine house	Halogen, (2) boom mounted, (2) cab mounted, (1) service, engine house
Optional .....	HID lighting package	HID lighting package



## SPECIFICATIONS

## 250D

## T250D

### OPERATOR'S STATION

CAB.....	Insulated, climate controlled, isolation mounted.....	Insulated, climate controlled, isolation mounted
	Forward sloping, tinted polycarbonate windshield with wiper	Forward sloping, tinted polycarbonate windshield with wiper
	Sliding tinted side windows	Sliding tinted side windows
	3-speed fan; Dome light	3-speed fan; Dome light
	Electronic engine monitoring system with LCD display	Electronic engine monitoring system with LCD display
SEAT.....	Heavy duty suspension, fully adjustable.....	Heavy duty suspension, fully adjustable

### OPERATOR CONTROLS

BOOM.....	Hydraulic joystick.....	Hydraulic joystick
STABILIZERS.....	Electric switches.....	N/A
SWING.....	Foot operated, pilot valve.....	Foot operated, pilot valve
TRAVEL.....	N/A.....	Foot operated, pilot valve

### OTHER STANDARD EQUIPMENT

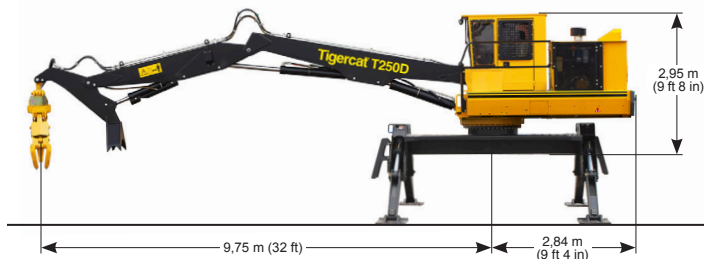
Delimber/bar saw slasher hydraulics	N/A
-------------------------------------	-----

### OPTIONAL EQUIPMENT

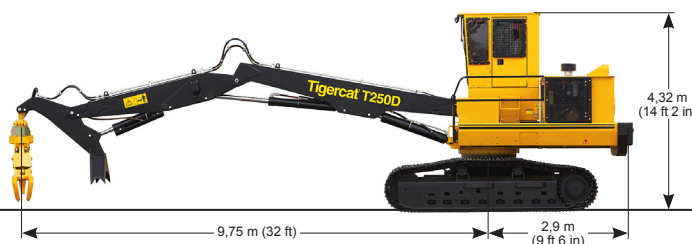
Tigercat LG4053, LG5057T grapples, continuous rotation	Tigercat LG4053, LG5057T grapples, continuous rotation
Other grapples available	Butt-n-top, power clam grapples
Live heel; Grapple saw hydraulics	Other grapples available
	Grapple saw hydraulics; Delimber/bar saw slasher hydraulics
	Live Heel; Cylinder lock valves
	1 575 mm (62 in) 'mill yard' cab riser
	SuperDuty (SD) package:
	11 m (36 ft) boom with live heel F6-152 undercarriage

TIGERCAT RESERVES THE RIGHT TO AMEND THESE SPECIFICATIONS AT ANY TIME WITHOUT NOTICE

## 250D LOADER



## T250D LOADER



Note: actual maximum reach with live heel is 10 m (33 ft)

## AC16 carrier

The AC16 articulating carrier is designed and built by Tigercat for mill yard duty cycles.

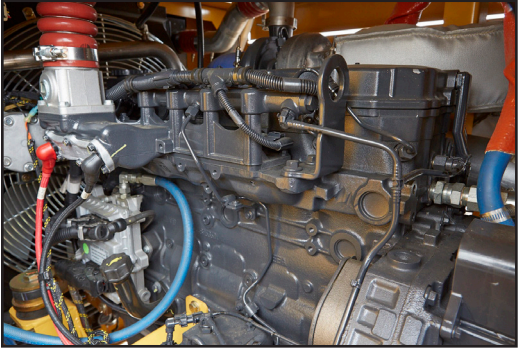
With forest duty axles and powerful tractive effort, the four-wheel drive AC16 handles rough terrain and towing applications with ease.

Optional integrated bunks are also available.

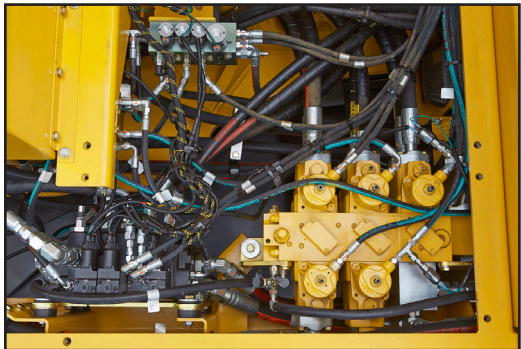
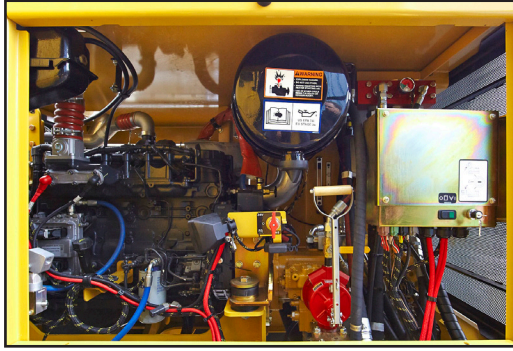




### **Excellent service access...**



*Excellent access to the engine and all daily service points*

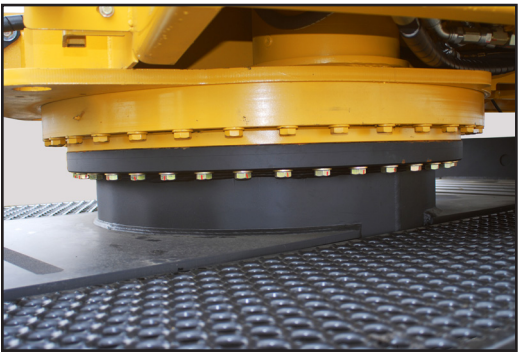


*All valves are located underneath the walk-up platform for easy access*



*Swing-out access to the hydraulic pumps and filters*

### **Durable construction...**



*Large diameter swing bearing; closed loop swing drive for added performance and efficiency*



*Large pins and thick steel plate at boom pivots for long, trouble-free service life*

### **250D**

*The 250D can be mounted on a trailer or the AC16 articulating carrier for the deck or the wood yard.*

*With fast, responsive controls and powerful lifting capacity, the 250D is ideal for high production merchandising and loading.*

*The strong boom set handles oversize timber and the lateral stresses of the toughest pull-through delimbing applications.*

### **T250D**

*The T250D is a very capable track carrier with high clearance, powerful tractive effort and excellent stability. The undercarriage is designed and built for full forest duty.*

*The combination of high horsepower and efficient hydraulics provide low cost per tonne operation in all high production loading and light duty shovel logging applications.*

**Tigercat**  
by **FPT**  
POWERTRAIN TECHNOLOGIES

*Tigercat FPT emission technology is simple and reliable, meeting Tier 4 emission standards without the complexities of a variable geometry turbocharger, EGR system, intake throttle body or diesel particulate filter. The key is the patented selective catalyst reduction (SCR) system. Tigercat FPT engines offer improved reliability and lower long-term maintenance costs.*

**TIGERCATPOWER.**  
**TIGERCATSUPPORT.**

54 Morton Ave. East  
Brantford, Ontario  
Canada, N3R 7J7  
Mail: Box 637 N3T 5P9

(7067) 1 0414•Tig

E-mail: [comments@tigercat.com](mailto:comments@tigercat.com)  
Internet: [www.tigercat.com](http://www.tigercat.com)  
Tel: (519) 753-2000  
Fax: (519) 753-8272

**Tigercat**<sup>®</sup>