



The Tigercat 604E is a quick, compact, fuel efficient cable skidder well suited to steep terrain, heavy timber and selective felling applications.

BENEFITS AND ADVANTAGES:

Powerful, efficient Tigercat FPT engine

- Automatic variable engine speed for high fuel efficiency
- Operator controlled maximum speed setting
- Simple, reliable SCR emission control technology for Tier 4f

EHS 'efficient high speed' hydrostatic drive

- Extremely efficient driveline with electronic control system
- Capable of high speeds in forward and reverse
- High performance, minimal wheel spin in adverse terrain

Advanced electronic control system

- Intuitive user interface and better fuel economy
- Provides precise control of all machine functions

High capacity cooling system

- Automatic variable pitch fan for reduced fuel consumption in cold climates
- Reversing airflow to keep the heat exchangers clean

Durable, reliable Tigercat axles

Designed and built for extreme duty

- Strength optimized frames
- Strong, long-life centre section constructed with thick steel plate, oversized pins and tapered roller bearings

Excellent service access

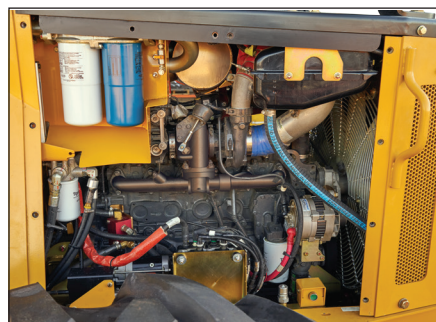
- Neat, compact engine enclosure
- Easy access to daily service points
- Tilt cab for access to pumps, motors and driveline

Turnaround® equipped operator's station

- Two-position Turnaround seat with ergonomic joystick steering and full rear-facing drive controls
- Excellent visibility to the sides of the engine house



Turnaround seat for reduced neck strain and improved ergonomics



Spacious, well designed engine compartment



Powerful pulling capacity

SPECIFICATIONS

DIMENSIONS

LENGTH	6 960 mm (274 in)
WHEELBASE	3 760 mm (148 in)
WIDTH	3 330 mm (131 in)
WIDTH narrow offset	3 020 mm (119 in)
HEIGHT	3 150 mm (124 in)
GROUND CLEARANCE	635 mm (25 in)
WEIGHT	12 700 kg (28,000 lb)

POWER

ENGINE	Tigercat FPT N67 Tier 4f 153 kW (205 hp) @ 2,200 rpm
Optional	Tigercat FPT N67 Tier 2 159 kW (213 hp) @ 2,100 rpm
AIR FILTRATION	Precleaner and 2-stage engine air cleaner
TOP SPEED	21 km/h (13 mph)
COOLING	Side-by-side aluminum radiator, oil cooler, charge air cooler and A/C condenser
FAN	Fixed pitch, blower
Optional	Flexaire® variable pitch, reversing
FUEL CAPACITY usable	175 L (46 US gal)
DEF CAPACITY Tier 4f	43 L (11 US gal)

POWER TRAIN

TRANSMISSION	EHS (efficient high speed) hydrostatic drive Single-speed mechanical Variable speed hydrostatic (2) variable displacement motors Tigercat IB15 wide, inboard planetary, barrel differential; +/-15° oscillation
AXLE, FRONT	Tigercat IB17, inboard planetary, barrel differential; Fixed
AXLE, REAR	Tigercat IB17, inboard planetary, barrel differential; Fixed
DIFFERENTIAL LOCKS	Independent front and rear

HYDRAULIC SYSTEM

PUMP, DRIVE	Piston
PUMP, MAIN 1	Piston for all machine functions
PUMP, MAIN 2	Gear for cooling
FILTRATION	(2) spin-on, 7 micron full-flow
CYLINDERS, STEER	(2) 85 mm (3.25 in) bore
CYLINDERS, BLADE	(2) 90 mm (3.5 in) bore
RESERVOIR	105 L (28 US gal)

BRAKES

DYNAMIC BRAKING	Hydrostatic
SECONDARY BRAKES	Enclosed, oil cooled
PARK BRAKE	Caliper; Spring applied/hydraulic release

TIRES

STANDARD	30.5Lx32,26
OPTIONAL	24.5x32,16; 28x26,16; 67x34-26,14 73x44-32,16

WINCH

LINE PULL at any engine rpm	
BARE DRUM	18 140 kg (40,000 lb)
FULL DRUM	10 885 kg (24,000 lb)
LINE SPEED at 2,475 rpm	
BARE DRUM	22.46 m (72-150 ft) per min
FULL DRUM	38.79 m (124-258 ft) per min
CAPACITY with 19 mm (3/4 in) cable	66 m (215 ft)
CAPACITY with 22 mm (7/8 in) cable	49 m (160 ft)
CAPACITY with 25 mm (1 in) cable	41 m (135 ft)

BLADE

WIDTH	2 285 mm (90 in)
With optional extensions	2 920 mm (115 in)

ELECTRICAL

BATTERY	(2) 12 v
ALTERNATOR	80 amp, 24 v
SYSTEM VOLTAGE	24 v

OPERATOR'S STATION

CAB	Insulated, pressurized and isolation mounted Air conditioner/heater/defroster; (2) doors with slide side windows and hinged screens Forward sloping windshield Machine monitoring system with LCD display AM/FM digital stereo CD, CB radio
SEAT	Extreme duty Turnaround, air ride; Fully adjustable height, seat back recline, lumbar support and armrests; 2-position mechanical lock, 100° rotating for rear-facing drive; Heated and cooled
OPERATOR CONTROLS	Electronic, joystick for grapple/blade/steering Electronic, foot pedal, front and rear with forward/reverse selector switch for drive Electronic control system with colour display screen interface for machine monitoring and function adjustment

OTHER STANDARD EQUIPMENT

Alarm for reverse drive; Fuel suction strainer
Fire extinguisher; Pressurized water system
Fenders

OPTIONAL EQUIPMENT

Halogen lighting package; HID lighting package;
Cold weather kit

TIGERCAT RESERVES THE RIGHT TO AMEND THESE SPECIFICATIONS AT ANY TIME WITHOUT NOTICE

TIGERCAT 604E SKIDDER



© 2001 - 2016 TigerCAT International Inc. All Rights Reserved. TIGERCAT, WIDERANGE, TURNAROUND, ER, EHS, and TEC, their respective logos, TOUGH RELIABLE PRODUCTIVE, TIGERCAT TV, "TigerCAT Orange" and BETWEEN THE BRANCHES, as well as corporate and product identity, are trademarks of TigerCAT International Inc., and may not be used without permission. TIGERCAT, TURNAROUND, WIDERANGE and ER, and their respective logos are registered trademarks of TigerCAT International Inc.

54 Morton Ave. East
Brantford, Ontario
Canada, N3R 7J7
Mail: Box 637 N3T 5P9
604E 1.1 0816

E-mail: comments@tigercat.com
Internet: www.tigercat.com
Tel: (519) 753-2000
Fax: (519) 753-8272

TigerCAT®