



The 250D series loaders are an excellent choice on the deck or in the mill yard. The 250D and T250D are designed and built for high production logging operations, heavy timber and tough duty cycle delimiting applications.

BENEFITS AND ADVANTAGES:

Powerful, efficient Tigercat FPT engine

- Extremely quiet and fuel efficient
- Simple, reliable SCR emission control technology for Tier 4f

Efficient load sensing hydraulic system

Dedicated, energy recovery swing system

- Closed loop drive feeds power back to the engine when swing decelerates, reducing fuel consumption and recovering energy for other machine functions
- Dedicated swing system for quick cycles and enhanced machine performance in delimiting applications

High capacity swing system

- Large diameter, high capacity bearing
- High torque starts and smooth stops

Optional SuperDuty (SD) package, T250D

- Larger F6-155 undercarriage and long reach 11 m (36 ft) boom with live heel for mill yard applications

Optional AC16 articulating carrier for the 250D

Powerful strength-to-weight optimized boom

- Robust, well-protected cylinders and large diameter pins
- Designed for heavy lifting and high duty cycle delimiting

Wide stance, forest duty undercarriage, T250D

- Long track frames for excellent stability and flotation
- High clearance carbody and powerful tractive effort for excellent infield mobility
- Designed and built by Tigercat for full forest duty cycles

Rigid, fabricated subframe, 250D

- Generously sized for excellent stability

Excellent service access

- Valves are conveniently located under the walk-up platform
- Platform access to daily service points
- Swing-out door to access hydraulic pumps and filters

Spacious, ergonomic operator's station

- Very quiet operating environment (64 - 68 dB)
- Excellent climate control, heated/cooled seats, window blinds
- High visibility instrumentation and engine monitoring system

SPECIFICATIONS

250D

T250D

DIMENSIONS

LENGTH less boom and steps	5 080 mm (200 in)
WIDTH	2 590 mm (102 in)
HEIGHT	3 450 mm (136 in)
With cab tilted for transport	N/A
GROUND CLEARANCE	N/A
WEIGHT less grapple	17 190 kg (37,900 lb)

POWER

ENGINE	Tigercat FPT N67 Tier 4f, 160 kW (215 hp) @ 1800 rpm Automatic idle down
Optional	Tigercat FPT N67 Tier 2, 160 kW (215 hp) @ 1800 rpm Automatic idle down
COOLING	Side-by-side aluminum radiator, oil cooler, charge air cooler and A/C condenser
FAN	Fixed pitch, high flow
Optional	Flexxaire® variable pitch, reversing
FUEL CAPACITY	378 L (100 US gal)
DEF CAPACITY	43 L (11 US gal)

HYDRAULIC SYSTEM

PUMP, MAIN	Piston
PUMP, SWING	Piston, pressure compensated
RESERVOIR	200 L (55 US gal)
FILTRATION	(4) Spin-on, 7 micron full-flow
CYLINDER, HOIST	178 mm (7 in) diameter
CYLINDER, STICK	152 mm (6 in) diameter
CYLINDERS, STABILIZER	(4) 165 mm (6.5 in) diameter Bolt-on bi-directional lock valves

ROTATING UPPER

SWING DRIVE	8 rpm variable, 360° continuous rotation Swing priority and energy recovery
SWING BEARING	1 190 mm (47 in) ball circle diameter; Internal gear teeth Double reduction planetary gearbox
ENCLOSURE	Walk-up platform
COUNTERWEIGHT	N/A
Optional	N/A

SUBFRAME, 250D

LENGTH less steps	4 290 mm (169 in)
SUPPORT BASE	3 810 mm x 4 650 mm (150 in x 183 in)
STABILIZER PADS	585 mm x 710 mm (23 in x 28 in)

UNDERCARRIAGE, T250D

TRACK FRAMES	F6-140 heavy duty forestry; Integral track guides/ramp angles
TRACK CHAIN	F8/D6D 203 mm (8 in) pitch sealed and greased
FINAL DRIVE	(2) Axial piston motors; Infinitely variable speed
TRACTIVE EFFORT	222 kN (50,000 lbf)
GEARBOX	Triple reduction planetary type with brake
FRONT IDLER	Hydraulic track adjuster; Spring shock absorber
ROLLERS, UPPER	(2) D6D excavator type
Optional	Bolt-on slides
ROLLERS, LOWER	(8) D6 single and double flange tractor type
TRACK SHOE	760 mm (30 in) triple grouser
Optional	915 mm (36 in) triple grouser 915 mm (36 in) triple grouser tri-track

BRAKES

TRACK	N/A	Friction disc; Automatic spring applied, hydraulic release
SWING	N/A	Friction disc; Manual spring applied, hydraulic release

BOOM

MAXIMUM REACH	9 750 mm (32 ft)	9 750 mm (32 ft)
LIFT CAPACITY	15 875 kg (35,000 lb) @ 3,35 m (11 ft) 7 075 kg (15,600 lb) @ 7,62 m (25 ft)	15 875 kg (35,000 lb) @ 3,35 m (11 ft) 7 075 kg (15,600 lb) @ 7,62 m (25 ft)
MAXIMUM REACH, SD package	N/A	11 000 mm (36 ft)
LIFT CAPACITY, SD package	N/A	9 980 kg (22,000 lb) @ 4,57 m (15 ft) reach 5 445 kg (12,000 lb) @ 7,62 m (25 ft) reach

ELECTRICAL

BATTERY	(2) 950 CCA, 12 v	(2) 950 CCA, 12 v
ALTERNATOR	80 amp, 24 v	80 amp
SYSTEM VOLTAGE	24 v	24 v
LIGHTING	Halogen, (2) boom mounted, (3) cab mounted, (1) engine house; (1) service, engine house	Halogen, (2) boom mounted, (3) cab mounted, (1) engine house; (1) service, engine house
Optional	LED lighting package	LED lighting package

SPECIFICATIONS

250D

T250D

OPERATOR'S STATION

CAB
 Insulated, pressurized and isolation mounted; Forward sloping, tinted polycarbonate windshield with intermittent wiper
 Sliding tinted side windows; Polycarbonate skylight; Window blinds for windshield and skylight
 A/C, heater, defroster and pressurizer
 3-speed fan; Dome light; Cell phone holder; (2) 12 v power points; CB radio
 AM/FM digital stereo with CD player and auxiliary input port; Bluetooth® audio and hands-free calling
 Electronic control system with colour LCD display screen for machine monitoring and function adjustment
 Heavy duty suspension, fully adjustable, heated and cooled

SEAT

OPERATOR CONTROLS

BOOM	Hydraulic joystick	Hydraulic joystick
STABILIZERS	Electric switches	N/A
SWING	Foot operated, pilot valve	Foot operated, pilot valve
TRAVEL	N/A	Foot operated, pilot valve

OTHER STANDARD EQUIPMENT

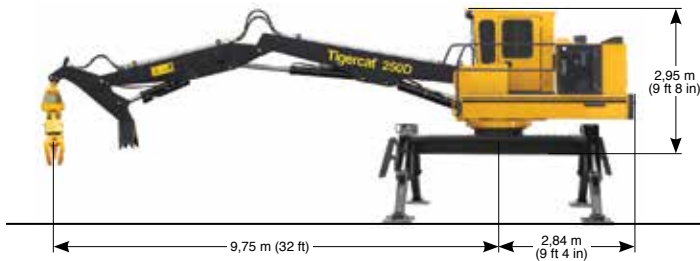
Delimber/bar saw slasher hydraulics	N/A
-------------------------------------	-----

OPTIONAL EQUIPMENT

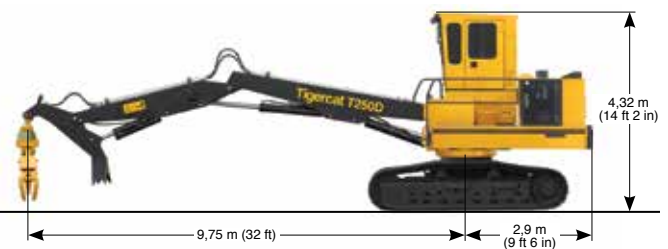
Tigercat LG4053, LG5057T grapples, continuous rotation	Tigercat LG4053, LG5057T grapples, continuous rotation
Other grapples available	Butt-n-top, power clam grapples; Other grapples available
Live heel; Cylinder lock valves	Live Heel; Cylinder lock valves
Grapple saw hydraulics	Grapple saw hydraulics; Delimber/bar saw slasher hydraulics
	1 575 mm (62 in) 'mill yard' cab riser
	SuperDuty (SD) package:
	11 m (36 ft) boom with live heel F6-152 undercarriage

TIGERCAT RESERVES THE RIGHT TO AMEND THESE SPECIFICATIONS AT ANY TIME WITHOUT NOTICE

250D LOADER



T250D LOADER



Note: actual maximum reach with live heel is 10 m (33 ft)



Tigercat FPT engines offer quick load response, low operating costs and high power density, combined with excellent fuel economy. The Tier 4f emission technology is simple and reliable without complex add-on components. The key is the patented selective catalyst reduction (SCR) system. Tigercat FPT engines offer improved reliability and lower long-term maintenance costs.

TIGERCATPOWER.
TIGERCATSUPPORT.

AC16 carrier

The AC16 articulating carrier is designed and built by Tigercat for mill yard duty applications.

With forest duty axles and powerful tractive effort, the four-wheel drive AC16 handles tough terrain and towing applications with ease.

Optional integrated bunks are also available.





A quiet, spacious, ergonomic operating environment ensures that the operator concentrates full attention on the essential tasks of merchandising and loading.



Excellent access to the engine and all daily service points



All valves are located underneath the walk-up platform for clear and easy access with neat hydraulic and electrical routings.

250D

The 250D can be mounted on a trailer or the AC16 articulating carrier for the deck or the wood yard. With fast, responsive controls and powerful lifting capacity, the 250D is ideal for high production merchandising and loading. The strong boom set handles oversize timber and the lateral stresses of the toughest pull-through delimiting applications.

T250D

The T250D is a very capable track carrier with high clearance, powerful tractive effort and excellent stability. The undercarriage is designed and built for full forest duty. The combination of high horsepower and efficient hydraulics provide low cost per tonne operation in all high production loading and light duty shovel logging applications.

© 2001 - 2016 Tigercat International Inc. All Rights Reserved. TIGERCAT, WIDERANGE, TURNAROUND, ER, EHS, and TEC, their respective logos, TOUGH RELIABLE PRODUCTIVE, TIGERCAT TV, "Tigercat Orange" and BETWEEN THE BRANCHES, as well as corporate and product identity, are trademarks of Tigercat International Inc., and may not be used without permission. TIGERCAT, TURNAROUND, WIDERANGE and ER, and their respective logos are registered trademarks of Tigercat International Inc.

54 Morton Ave. East
Brantford, Ontario
Canada, N3R 7J7
Mail: Box 637 N3T 5P9
250D/T250D 1.4 0117

E-mail: comments@tigercat.com
Internet: www.tigercat.com
Tel: (519) 753-2000
Fax: (519) 753-8272

Tigercat®