

470 MULCHER



The 470 is a 300 hp class track driven mulcher carrier well suited to right-of-way and site preparation projects where a narrow, agile machine with extremely low ground pressure is required.

BENEFITS AND ADVANTAGES:

Fuel efficient Tigercat FPT C87 Tier 4f engine

Efficient, high capacity cooling system

- Automatic variable speed, reversible fan for improved fuel economy and cold weather starts

Tigercat build quality for full-time extreme duty cycle applications

Extremely low ground pressure for soft soil

Efficient closed loop track drive system

High-lift boom geometry

- Maintains productivity in uneven and sloped terrain

Heavy duty forestry undercarriage

Quiet, climate controlled operator's station

- Insulated and isolation mounted
- High output heater and A/C
- Extreme duty air ride seat
- CRF counter rotate function for one touch 'on a dime' turns
- Ergonomic armrest mounted joystick steer and drive

Excellent performance in challenging terrain

Choice of horizontal drum type mulching attachments requiring up to 224 kW (300 hp)

Excellent access to daily service points

- Tilting cab for additional access to components



High capacity cooling system



Narrow overall width



Easy access for daily maintenance

470

DIMENSIONS

LENGTH less attachment	5 000 mm (197 in)
WIDTH	2 415 mm (95 in)
HEIGHT	3 000 mm (118 in)
GROUND CLEARANCE	465 mm (18 in)
GROUND PRESSURE less attachment	23,4 kPa (3.4 psi) @ 75 mm (3 in) penetration
WEIGHT less attachment	13 925 kg (30,700 lb)

POWER

ENGINE	Tigercat FPT C87 Tier 4f
▶ RATED	245 kW (328 hp) @ 1,800 rpm
▶ PEAK TORQUE	1 510 Nm (1,115 lbf-ft) @ 1,100-1,600 rpm
AIR FILTRATION	Precleaner and 2-stage engine air cleaner
COOLING	Aluminum side by side radiator, oil cooler, charge air cooler and A/C condenser
FAN	Hydraulically driven; Automatic variable speed with automatic reversing cycle
▶ Optional	Flexxaire® variable pitch, reversing
FUEL CAPACITY usable	455 L (120 US gal)
DEF CAPACITY Tier 4f	80 L (21 US gal)

TOP SPEED

FORWARD/REVERSE	7 km/h (4.25 mph)
-----------------	-------------------

HYDRAULIC SYSTEM

PUMP, ATTACHMENT	Piston
PUMP, TRACK	Piston
PUMP, BOOM	Piston
PUMP, FAN	Piston
RESERVOIR	227 L (60 US gal)
FILTRATION	(6) spin-on, 7 micron full flow
CYLINDERS, BOOM LIFT	140 mm (5.5 in) bore
CYLINDERS, BOOM TILT	(2) 140 mm (5.5 in) bore

UNDERCARRIAGE

TRACK FRAMES	D4 heavy-duty forestry Integral track guides, ramp angles
TRACK CHAIN	D4 170 mm (6.75 in) pitch sealed and greased
FINAL DRIVE	(2) Axial piston motors; Infinitely variable speed
TRACTIVE EFFORT	240 kN (54,000 lbf)
GEARBOX	Triple reduction planetary with brake
FRONT IDLER	Hydraulic track adjuster; Spring shock absorber
ROLLERS, UPPER	(2) D4 single flange excavator type
ROLLERS, LOWER	(10) D4 single flange excavator type
TRACK SHOE	800 mm (31.5 in) triple grouser
▶ Optional	800 mm (31.5 in) single/double grouser 915 mm (36 in) double/triple grouser tri-track

BRAKES

TRACK	Friction disc Automatic spring applied, hydraulic release
-------	--

ELECTRICAL

BATTERY	(2) 12 v
ALTERNATOR	110 amp, 24 v
SYSTEM VOLTAGE	24 v

OPERATOR'S STATION

CAB	Fully enclosed, insulated and isolation mounted (2) doors and roof exit; Air conditioner heater and pressurizer; Polycarbonate front and rear glazing Forward sloping windshield; Sliding tempered glass side windows; Side door screens, hinged AM/FM CD stereo
SEAT	Extreme duty air ride, fully adjustable Armrest mounted joysticks
OPERATOR CONTROLS	Electronic for travel/steering/boom, joystick control Electronic travel speed control limiter Cruise control; Counter rotate function (CRF) Electronic control system with colour display screen interface for machine monitoring and function adjustment

OTHER STANDARD EQUIPMENT

	Back-up alarm; Rear camera; Air compressor Hydraulic reservoir hand fill pump Fire extinguisher; LED service lights LED cab mounted working lights, fire detection
--	--

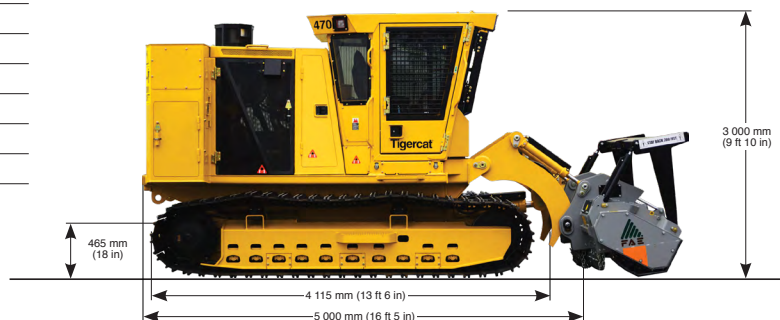
OPTIONAL EQUIPMENT

	Recovery winch; Ground level fueling system CB radio; Fire suppression system Cold weather aids (110 VAC or diesel powered) Heated seat
--	---

MULCHING HEAD

	Flexible hydraulic system Choice of horizontal drum type mulching attachments requiring up to 224 kW (300 hp)
--	---

TIGERCAT 470 MULCHER



ALL ENGINE POWER VALUES ARE QUOTED AT NET POWER, AS PER SAE J1349.
TIGERCAT RESERVES THE RIGHT TO AMEND THESE SPECIFICATIONS AT ANY TIME WITHOUT NOTICE.
WEIGHTS AND DIMENSIONS MAY VARY SUBJECT TO MACHINE OPTIONS AND CONFIGURATIONS.
FOR THE MOST CURRENT SPECIFICATIONS PLEASE REFER TO THE TIGERCAT WEBSITE OR MOBILE APP.

EMAIL	comments@tigercat.com
PHONE	519.753.2000
WEBSITE	www.tigercat.com
ADDRESS	54 Morton Ave. East, Brantford, Ontario Canada, N3R 7J7
MAIL	Box 637 N3T 5P9

© 2001 - 2019 Tigercat International Inc. All Rights Reserved. TIGERCAT, WIDERANGE, TURNAROUND, ER, EHS, LOW-WIDE, TEC, REMOTELOG and their respective logos, TOUGH RELIABLE PRODUCTIVE, TIGERCAT TV, "Tigercat Orange" and BETWEEN THE BRANCHES, as well as corporate and product identity, are trademarks of Tigercat International Inc., and may not be used without permission. TIGERCAT, TURNAROUND, WIDERANGE, EHS, LOW-WIDE and ER, and their respective logos are registered trademarks of Tigercat International Inc.