

234B/T234B LOADER



The 234B series loaders are an excellent choice on the deck or in the mill yard. The 234B and T234B are designed and built for high production logging operations and high duty cycle delimiting.

BENEFITS AND ADVANTAGES:

Quiet, efficient, Tigercat FPT Tier 4f engine

- Perfectly matched to the 234B duty cycle
- Simple, reliable SCR emission control technology
- High performance with low fuel and DEF consumption

Efficient load sensing hydraulic system

- Extremely fuel efficient for reduced cost per tonne

Dedicated, energy recovery swing system

- Closed loop drive feeds power back to the engine when swing decelerates, reducing fuel consumption and recovering energy for other machine functions
- Dedicated swing system for quick cycles and enhanced machine performance in delimiting applications

High capacity swing system

- Large diameter, high capacity bearing
- High torque starts and smooth stops

Heavy duty strength-to-weight optimized boom

- Robust, well-protected cylinders and large diameter pins
- Designed for heavy lifting and high duty cycle delimiting

Wide stance, forest duty undercarriage, T234B

- Long track frames for rock solid stability and high flotation
- High clearance carbody and powerful tractive effort for excellent infield mobility
- Designed and built by Tigercat for full forest duty cycles

Rigid, fabricated subframe, 234B

- Generously sized for excellent stability

Optional AC16 articulating carrier

- Powerful tractive effort and towing capacity for demanding mill yard applications

Excellent service access

- Valves are conveniently located under the walk-up platform
- Platform access to engine and daily service points
- Swing-out door to access hydraulic pumps and filters

Spacious, ergonomic operator's station

- Very quiet operating environment (64 - 68 dB)
- Excellent climate control, heated/cooled seats, window blinds
- High visibility instrumentation and engine monitoring system

SPECIFICATIONS

234B

T234B

DIMENSIONS

LENGTH less boom and steps	4 900 mm (193 in)	5 260 mm (207 in)
WIDTH	2 590 mm (102 in)	3 430 mm (135 in)
HEIGHT	3 530 mm (139 in)	4 395 mm (173 in)
HEIGHT with cab tilted for transport	N/A	3 555 mm (140 in)
GROUND CLEARANCE	N/A	700 mm (27 in)
WEIGHT less grapple	15 130 kg (33,350 lb)	24 090 kg (53,100 lb)

POWER

ENGINE Tier 4f	Tigercat FPT N67 Tier 4f	Tigercat FPT N67 Tier 4f
▶ RATED	125 kW (168 hp) @ 2,200 rpm	125 kW (168 hp) @ 2,200 rpm
▶ PEAK	129 kW (173 hp) @ 1,900 rpm	129 kW (173 hp) @ 1,900 rpm
ENGINE Tier 2	Tigercat FPT N67 Tier 2	Tigercat FPT N67 Tier 2
▶ RATED	160 kW (215 hp) @ 1800 rpm	160 kW (215 hp) @ 1800 rpm
▶ PEAK	160 kW (215 hp) @ 1800 rpm	160 kW (215 hp) @ 1800 rpm
COOLING	Side-by-side aluminum radiator, oil cooler, charge air cooler and A/C condenser	Side-by-side aluminum radiator, oil cooler, charge air cooler and A/C condenser
FAN	Fixed pitch, high flow	Fixed pitch, high flow
▶ Optional	Flexxaire® variable pitch, reversing	Flexxaire® variable pitch, reversing
FUEL CAPACITY	378 L (100 US gal)	450 L (120 US gal)
DEF CAPACITY Tier 4f	43 L (11 US gal)	43 L (11 US gal)

HYDRAULIC SYSTEM

PUMP, MAIN	Piston	Piston
PUMP, SWING	Piston, pressure compensated	Piston, pressure compensated
RESERVOIR	200 L (55 US gal)	200 L (55 US gal)
FILTRATION	(4) Spin-on, 7 micron full-flow	(4) Spin-on, 7 micron full-flow
CYLINDER, HOIST	165 mm (6.5 in) bore	165 mm (6.5 in) bore
CYLINDER, STICK	140 mm (5.5 in) bore	140 mm (5.5 in) bore
CYLINDERS, STABILIZER	(4) 165 mm (6.5 in) bore, bolt-on bi-directional lock valves	N/A

ROTATING UPPER

SWING DRIVE	9 rpm variable, 360° continuous rotation Swing priority and energy recovery	9 rpm variable, 360° continuous rotation Swing priority and energy recovery
SWING BEARING	1 190 mm (47 in) ball circle diameter; Internal gear teeth Double reduction planetary gearbox	1 190 mm (47 in) ball circle diameter; Internal gear teeth Double reduction planetary gearbox
ENCLOSURE	Walk-up platform	Walk-up platform
COUNTERWEIGHT	910 kg (2,000 lb)	1 590 kg (3,500 lb)
▶ Optional	N/A	2 270 kg (5,000 lb)

SUBFRAME

LENGTH less steps	4 290 mm (169 in)	N/A
SUPPORT BASE	3 810 mm x 4 650 mm (150 in x 183 in)	N/A
STABILIZER PADS	585 mm x 710 mm (23 in x 28 in)	N/A

UNDERCARRIAGE

TRACK FRAMES	N/A	F6-140 heavy duty forestry; Integral track guides/ramp angles
TRACK CHAIN	N/A	F8/D6D 203 mm (8 in) pitch sealed and greased
FINAL DRIVE	N/A	(2) Axial piston motors; Infinitely variable speed
TRACTIVE EFFORT	N/A	187 kN (42,000 lbf)
GEARBOX	N/A	Triple reduction planetary type with brake
FRONT IDLER	N/A	Hydraulic track adjuster; Spring shock absorber
ROLLERS, UPPER	N/A	(2) D6D excavator type
▶ Optional	N/A	Bolt-on slides
ROLLERS, LOWER	N/A	(8) D6 single and double flange tractor type
TRACK SHOE	N/A	760 mm (30 in) triple grouser
▶ Optional	N/A	915 mm (36 in) triple grouser 915 mm (36 in) triple grouser tri-track

BRAKES

SWING	N/A	Friction disc; Automatic spring applied, hydraulic release
TRACK	N/A	Friction disc; Manual spring applied, hydraulic release

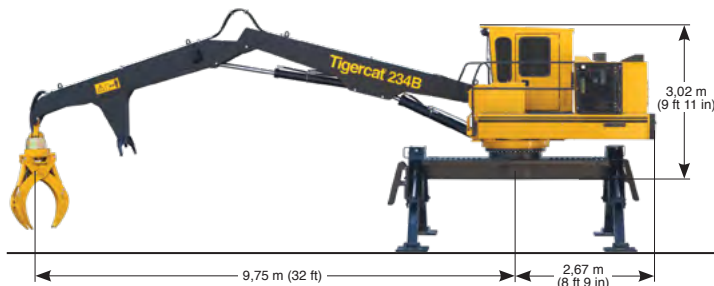
234B

T234B

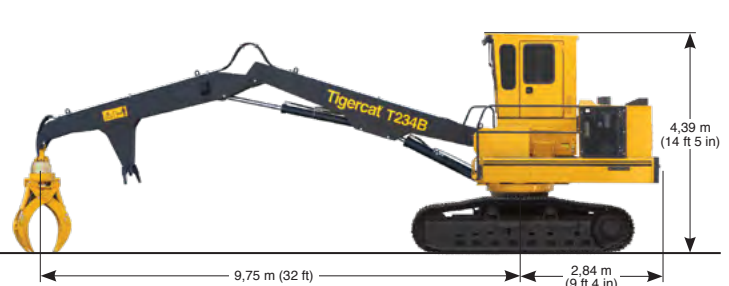
BOOM		
MAXIMUM REACH	9 750 mm (32 ft)	9 750 mm (32 ft)
LIFT CAPACITY	14 740 kg (32,500 lb) @ 3,35 m (11 ft) 5 670 kg (12,500 lb) @ 7,6 m (25 ft)	14 740 kg (32,500 lb) @ 3,35 m (11 ft) 5 670 kg (12,500 lb) @ 7,6 m (25 ft)
ELECTRICAL		
BATTERY	(2) 950 CCA, 12 v	(2) 950 CCA, 12 v
ALTERNATOR	80 amp, 24 v	80 amp, 24 v
SYSTEM VOLTAGE	24 v	24 v
LIGHTING	Halogen, (2) boom mounted, (3) cab mounted, (1) engine house; (1) service, engine house	Halogen, (2) boom mounted, (3) cab mounted, (1) engine house; (1) service, engine house
► Optional	LED lighting package	LED lighting package
OPERATOR'S STATION		
CAB	Insulated, pressurized and isolation mounted; Forward sloping, tinted polycarbonate windshield with intermittent wiper; Sliding tinted side windows; Polycarbonate skylight; Window blinds for windshield and skylight; A/C, heater, defroster and pressurizer 3-speed fan; Dome light; Cell phone holder; (2) 12 v power points; CB radio AM/FM digital stereo with CD player and auxiliary input port; Bluetooth® audio and hands-free calling Electronic control system with colour LCD display screen for machine monitoring and function adjustment	
SEAT	Heavy duty suspension, fully adjustable, heated and cooled	
OPERATOR CONTROLS		
BOOM	Electronic joystick	Electronic joystick
► Optional	Hydraulic joystick	Hydraulic joystick
STABILIZERS	Electric switches	N/A
SWING	Foot operated, pilot valve	Foot operated, pilot valve
TRAVEL	N/A	Foot operated, pilot valve
OTHER STANDARD EQUIPMENT		
	Delimber/bar saw slasher hydraulics	760 mm (30 in) cab riser
OPTIONAL EQUIPMENT		
	Tigercat LG4053, LG5057T grapples, continuous rotation Other grapples available; Live Heel Grapple saw hydraulics Circle saw slasher hydraulics Self-propelled hydraulics 760 mm (30 in) cab riser Remotelog™ 8482 telematics system	Tigercat LG4053, LG5057T grapples, continuous rotation Other grapples available; Live heel Grapple saw hydraulics Delimber/slasher hydraulics Circle saw slasher hydraulics 1 575 mm (62 in) 'mill yard' cab riser F6-152 undercarriage Remotelog™ 8482 telematics system

ALL ENGINE POWER VALUES ARE QUOTED AT NET POWER, AS PER SAE J1349.
TIGERCAT RESERVES THE RIGHT TO AMEND THESE SPECIFICATIONS AT ANY TIME WITHOUT NOTICE.
WEIGHTS AND DIMENSIONS MAY VARY SUBJECT TO MACHINE OPTIONS AND CONFIGURATIONS.
FOR THE MOST CURRENT SPECIFICATIONS PLEASE REFER TO THE TIGERCAT WEBSITE OR MOBILE APP.

234B LOADER



T234B LOADER

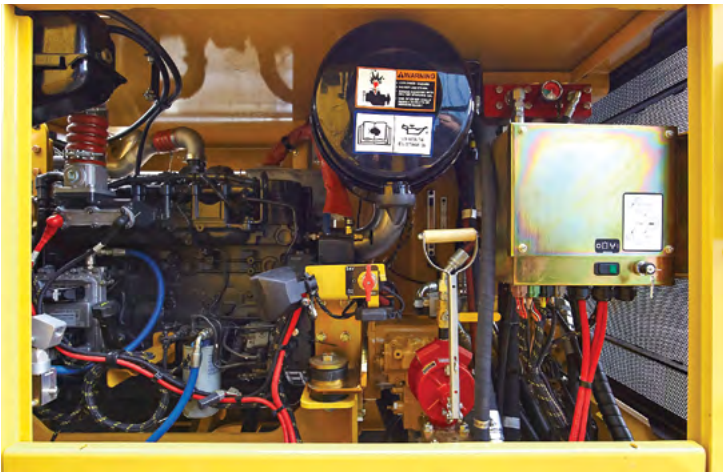


AC16 CARRIER

The AC16 articulating carrier is designed and built by Tigercat for mill yard duty applications. With forest duty axles and powerful tractive effort, the four-wheel drive AC16 handles tough terrain and towing applications with ease. Optional integrated bunks are also available.



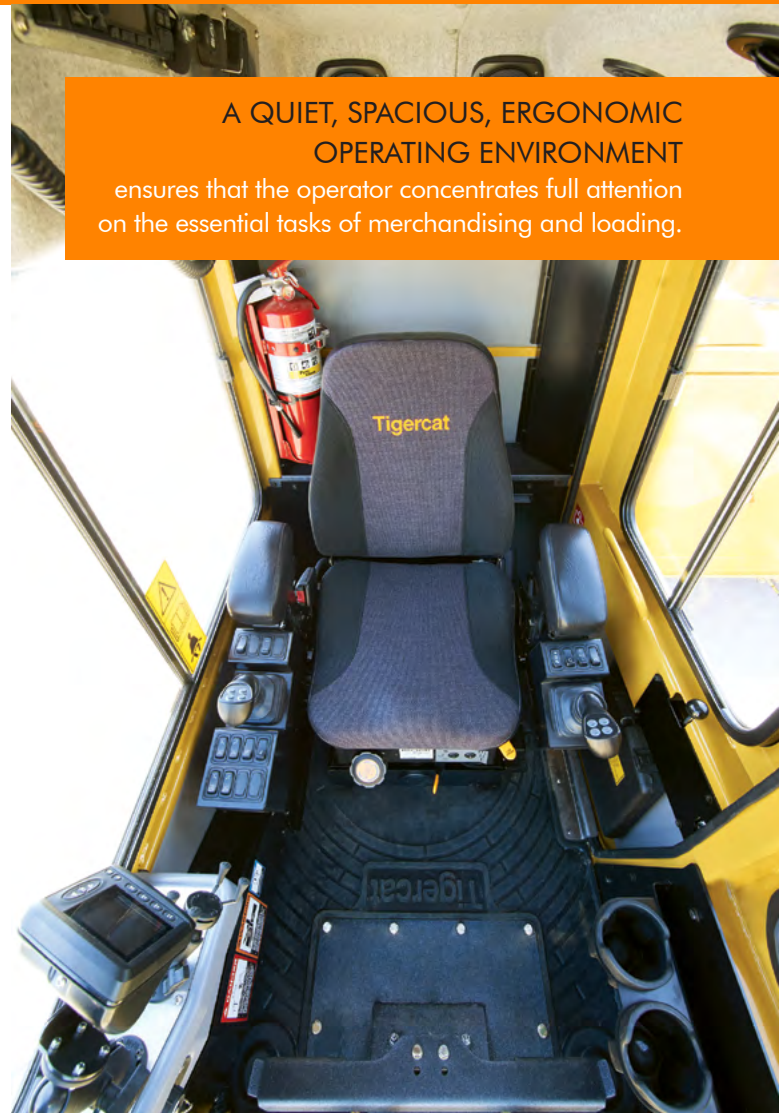
ACCESSIBILITY



Convenient platform access to the engine and daily service points. The compartment is neat and spacious.



All valves are located underneath the walk-up platform for clear and easy access with neat hydraulic and electrical routings.



A QUIET, SPACIOUS, ERGONOMIC OPERATING ENVIRONMENT ensures that the operator concentrates full attention on the essential tasks of merchandising and loading.

A quiet, spacious, ergonomic operating environment ensures that the operator concentrates full attention on the essential tasks of merchandising and loading.

Tigercat
by **FPT**
POWERTRAIN TECHNOLOGIES

TIGERCAT FPT ENGINE TECHNOLOGY

Tigercat FPT Tier 4f engines offer quick load response, low operating costs and high power density, combined with excellent fuel economy.

The second-generation common rail fuel injection system provides top performance in the most demanding applications.

Tigercat FPT Tier 4f emission technology is simple and reliable. The Tier 4f configuration meets emission standards without complex add-on components. The key is the patented selective catalyst reduction (SCR) after-treatment system.

Tigercat FPT engines offer improved reliability and lower long-term maintenance costs – the clear power choice for forestry and off-road industrial applications.

TIGERCATPOWER.
TIGERCATSUPPORT.™



EMAIL	comments@tigercat.com
PHONE	519.753.2000
WEBSITE	www.tigercat.com
ADDRESS	54 Morton Ave. East, Brantford, Ontario Canada, N3R 7J7
MAIL	Box 637 N3T 5P9

© 2001 - 2019 Tigercat International Inc. All Rights Reserved. TIGERCAT, WIDERANGE, TURNAROUND, ER, EHS, LOW-WIDE, TEC, REMOTELOG and their respective logos, TOUGH RELIABLE PRODUCTIVE, TIGERCAT TV, "Tigercat Orange" and BETWEEN THE BRANCHES, as well as corporate and product identity, are trademarks of Tigercat International Inc., and may not be used without permission. TIGERCAT, TURNAROUND, WIDERANGE, EHS, LOW-WIDE and ER, and their respective logos are registered trademarks of Tigercat International Inc.