

H-SERIES FELLER BUNCHERS

720H | 724H | 726H



TIGERCAT BUILT ITS REPUTATION ON FELLER BUNCHERS.
TODAY'S MACHINES OFFER UPTIME, HIGH PERFORMANCE, AND OPERATOR COMFORT.

Tigercat®
Tough • Reliable • Productive

THE H-SERIES LINE-UP

720H

The Tigercat 720H is a versatile feller buncher characterized by speed, agility and clear sight lines. Ideal for contractors requiring flexibility, the 720H is suited to a range of applications from high-cycle plantation thinning to felling mature saw timber.



724H

With ample power and a longer footprint, the 724H feller buncher benefits from added stability and increased responsiveness. Well suited to a wide range of demanding, high production logging operations.



726H

The 726H is the industry's most powerful drive-to-tree feller buncher – the best choice for oversized timber, top heavy hardwood, natural stands and challenging terrain. A long wheelbase and optimized weight distribution provide the stability, traction and confidence required for big timber and tough terrain.



FELLING HEADS

Tigercat Industries' full range of attachments lets you tailor each feller buncher to your specific needs. Selecting the right felling attachment enhances productivity, improves efficiency, and reduces overall operating costs across the harvesting system.



TELEMATICS SOLUTIONS

REDUCE DOWNTIME AND TROUBLE
SHOOT ISSUES FASTER AND SMARTER.



Remote
LOG

LOGONTM

RemoteLog delivers a real-time, satellite-based connection to a machine, a crew, or multiple crews. Access timeline and production data for each machine, monitor machine health, and receive critical diagnostic messages as they occur. Even in remote areas, satellite text messaging keeps communication open. RemoteLog enables complete off-site fleet management, wherever your operations take you.

LogOn provides onsite access to production and service information. Using a mobile device and a secure Wi-Fi hotspot, users can quickly access and transfer detailed machine data, including production and machine health metrics. At the worksite, satellite text messaging maintains communication with head office or your dealer. Advanced diagnostic tools give you the ability to look up fault codes and take informed action to diagnose and repair.

OPERATOR'S STATION



A LOOK INSIDE

The H-series operator's cabin is designed to provide the best sightlines, and class-leading comfort and convenience. Increased interior volume adds legroom and additional storage. The front windshield and rear quarter windows are much larger, and a dual camera rearVIEW system further enhances rear visibility. A large skylight is located on the sloping roof plate to easily shed debris.

Cab comfort and visibility

- ▶ Spacious new cab — longer, wider, more legroom, and storage
- ▶ Enhanced visibility — 27% larger front window, 40% larger rear quarter windows, lowered window lines, and 40% larger flush-mounted skylight with emergency exit
- ▶ Comfort features — premium air-ride seat with heating, cooling, lumbar support, and fully adjustable settings, plus heated/cooled cup holder
- ▶ Quiet ride — sound-deadening insulation throughout the cab
- ▶ Climate control — enhanced HVAC system for improved performance
- ▶ Operator control — programmable joystick buttons for arms, differential lock, and drive speed
- ▶ Enhancements include a durable ¾-inch roof plate and four alternate exits — the right-hand door, door windows, and a skylight



TIGERCAT BUILD QUALITY



Built for long life and high resale value, with a heavy-duty centre joint engineered to last the life of the machine.

900 lb rear-bumper counterweight for added stability, with a removable centre cover for easy lower pump access.



THE BIG PICTURE

Tigercat feller bunchers are renowned for their structural integrity, delivering exceptional stability, durability, and performance. A longer wheelbase, heavy rear bumper, and configurable hydraulics enhance control and efficiency, while robust components and easy service access ensure long lifecycles, high resale values, and maximum uptime.

Stable, productive, and configurable

- ▶ Extended wheelbase — improved stability and tighter turning radius
- ▶ 900 lb counterweight built into the rear bumper, further enhancing stability

Hydraulic system options:

- ▶ Load-sensing piston pump for multifunctioning and power management, or familiar gear pump with an updated saw valve
- ▶ Both systems use the same pilot-operated joysticks
- ▶ wideRANGE drive provides quicker working travel speeds and powerful tractive effort

High-performance, long-lasting components

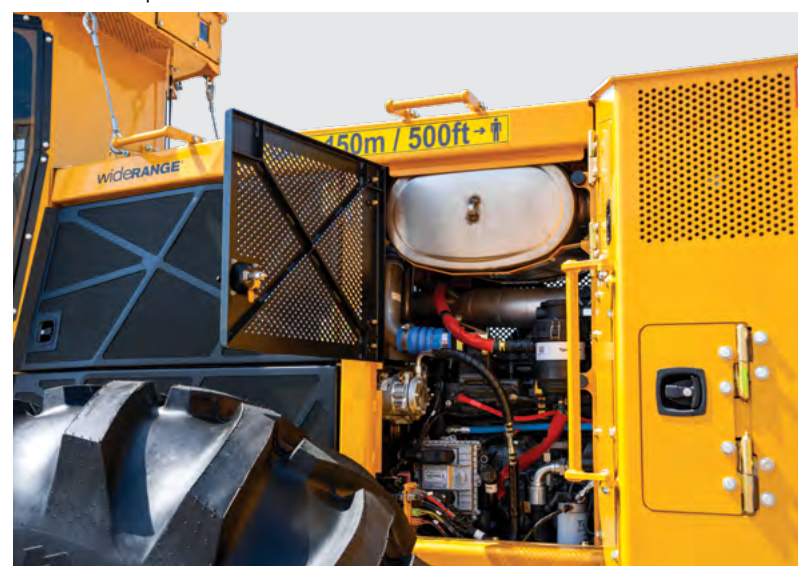
- ▶ Long-life centre section constructed with thick steel plate, large diameter pins and tapered roller bearings
- ▶ Durable Tigercat axles accommodate a wide range of tire options, including dual tire configurations
- ▶ High-capacity cross-flow cooling with automatic variable speed and reversing extend engine and hydraulic component life

Easy access and serviceability

- ▶ Redesigned access with additional lower step for easier entry and exit
- ▶ Extra front step for cleaning and maintenance access
- ▶ Full cab access through both doors
- ▶ Removable rear cover for easy pump access
- ▶ In-tank hydraulic filter extends service intervals
- ▶ Lowered manual fuel fill; optional ground-level fuel fill system
- ▶ Compartmentalized layout separates the cooling system, engine and hydraulic components

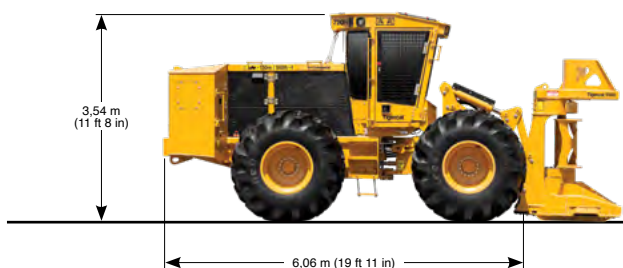
Side door provides easy access to the fuel filter, engine oil dipstick and fill cap.

Redesigned cab access with an added lower step for easier entry and exit, plus an extra front step for convenient cleaning and maintenance access.



GET TO KNOW THEM

720H



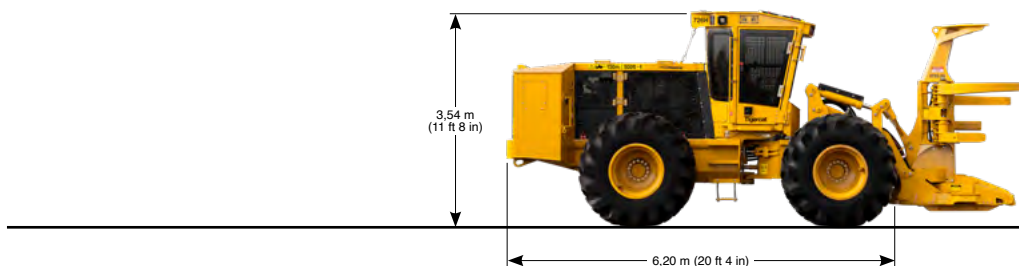
Scan the QR code then click 'SPECS' for a full list of machine specifications for the 720H Feller Buncher.

724H



Scan the QR code then click 'SPECS' for a full list of machine specifications for the 724H Feller Buncher.

726H



Scan the QR code then click 'SPECS' for a full list of machine specifications for the 726H Feller Buncher.

Download the Tigercat-TCi App to access the most current machine specifications for all Tigercat and TCi machine models.

EMAIL	comments@tigercat.com
PHONE	519.753.2000
WEBSITE	www.tigercat.com
ADDRESS	54 Morton Ave. East, Brantford, Ontario Canada, N3R 7J7
MAIL	Box 637 N3T 5P9

© 2001 - 2025 Tigercat International Inc. All Rights Reserved. TIGERCAT, WIDERANGE, TURNAROUND, ER, EHS, LOW-WIDE, TEC, REMOTELOG, LOGON, TCI, and their respective logos, TOUGH RELIABLE PRODUCTIVE, TIGERCAT TV, "Tigercat Orange" and BETWEEN THE BRANCHES, as well as corporate and product identity, are trademarks of Tigercat International Inc., and may not be used without permission. TIGERCAT, TCI, TURNAROUND, WIDERANGE, EHS, LOW-WIDE, ER and REMOTELOG, and their respective logos are registered trademarks of Tigercat International Inc.