

DRIVE-TO-TREE FELLER BUNCHERS



TIGERCAT DRIVE-TO-TREE FELLER BUNCHERS LEAD THE INDUSTRY IN PRODUCTIVITY, RELIABILITY AND DURABILITY.

The lowest cost per tonne harvesting solutions in plantations and natural stands.

With three models and a full range of Tigercat saw and shear felling heads to choose from, a machine can be configured and optimized to match any drive-to-tree feller buncher application.

THE 720G

The 720G is highly versatile for contractors requiring a productive machine for thinning and final felling.



THE 724G

The 724G is powerful, stable and versatile, suited to a wide variety of felling applications and conditions.



THE 726G

The 726G is extremely powerful and stable for high performance in tough terrain and large timber.



Tigercat[®]
Tough • Reliable • Productive



wideRANGE®

DRIVE-TO-TREE FELLER BUNCHERS SPEND A LARGE PART OF THE TOTAL DUTY CYCLE DRIVING – TO THE NEXT TREE OR TO AND FROM THE BUNCH PILE.

WideRange allows the feller buncher operator to travel more quickly than machines equipped with a conventional two-speed manual shift transmission. With WideRange, full tractive effort is always available when the going gets tough. And the operator always has command of the full speed range. It's the best of both worlds.

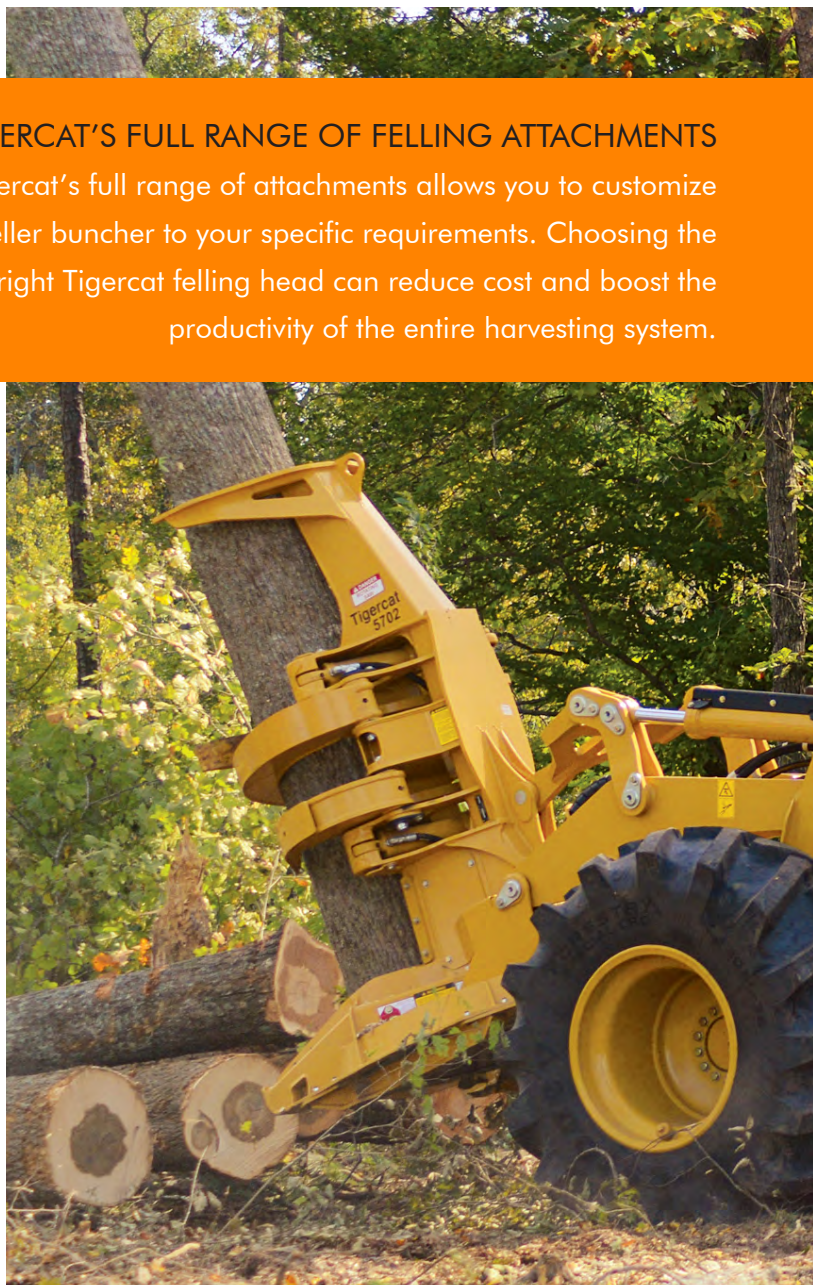
WHY CHOOSE TIGERCAT ?

- Legendary Tigercat centre section constructed with thick steel plate, large pins and tapered roller bearings
- WideRange drive increases working travel speed without sacrificing tractive effort for quicker bunching cycles and increased production
- Optimized hydraulic system maximizes power to the saw for quicker cycle times and higher production per hour
- Cooling system, engine and hydraulic components are located in three separate compartments
- Tigercat IB15 axle for all models with a wide variety of available tire options
- Cross-flow cooling with hydraulic driven automatic variable speed fan with automatic reversing cycle
- Hydraulic pumps and filters are oriented to the rear and easily accessible through a large swing-out door



TIGERCAT'S FULL RANGE OF FELLING ATTACHMENTS

Tigercat's full range of attachments allows you to customize a feller buncher to your specific requirements. Choosing the right Tigercat felling head can reduce cost and boost the productivity of the entire harvesting system.



Tigercat
by **FPT**
FORESTRY TECHNOLOGIES

TIGERCAT FPT ENGINE TECHNOLOGY

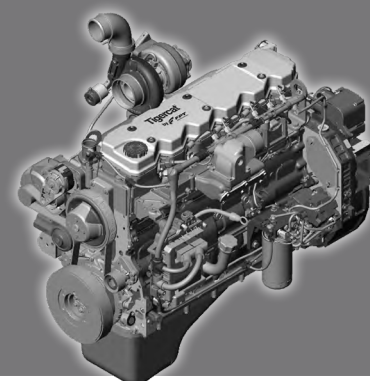
Tigercat FPT Tier 2 and Tier 4f engines offer quick load response, low operating costs and high power density, combined with excellent fuel economy.

The second-generation common rail fuel injection system provides top performance in demanding applications.

Tigercat FPT Tier 4f emission technology is simple and reliable. The Tier 4f configuration meets emission standards without complex add-on components. The key is the patented selective catalyst reduction (SCR) after-treatment system.

Tigercat FPT engines offer improved reliability and lower long-term maintenance costs – the clear power choice for forestry and off road industrial applications.

TIGERCATPOWER.
TIGERCATSUPPORT.



FOR THE OPERATOR



COMFORTABLE, SPACIOUS, QUIET OPERATOR'S STATION

- Ergonomic, heated and pull-through ventilation seat with air-ride suspension for improved comfort
- Ergonomic mounted joysticks to control steering and boom functions
- Better visibility for the operator with larger windshield and skylight window
- Reduced noise levels allow you to take advantage of the Bluetooth® sound system with hands free calling
- Excellent visibility to the tires through rear quarter windows



TIGERCAT AXLES

- In-house development and manufacture ensures that the axles are matched to the high performance and demanding duty cycles of Tigercat drive-to-tree feller bunchers
- Tigercat's advanced machining capability and strict quality control processes provide axle components you can count on for low operating costs and long life

Tigercat®



CROSS-FLOW

High capacity cross-flow cooling with automatic variable speed fan and reversing cycle.



CONVENIENCE

Working height access to hydraulic pumps and filters through the rear swing-out door.



THE STRONGEST CHOICE

Strong centre section with thick steel plate, large pins and tapered roller bearings.



EASY ACCESS

Neat, clean engine compartment with quick access to both sides of the engine and all daily service points.

SPECIFICATIONS

720G

724G

726G

DIMENSIONS WITH STANDARD TIRES

WIDTH	2 970 mm (117 in)	3 125 mm (123 in)	3 125 mm (123 in)
LENGTH less attachment	5 790 mm (228 in)	5 790 mm (228 in)	5 920 mm (233 in)
WHEELBASE	2 920 mm (115 in)	2 920 mm (115 in)	3 050 mm (120 in)
HEIGHT	3 505 mm (138 in)	3 505 mm (138 in)	3 505 mm (138 in)
GROUND CLEARANCE	635 mm (25 in)	635 mm (25 in)	635 mm (25 in)
FRAME ARTICULATION maximum	+/- 45°	+/- 45°	+/- 45°
WEIGHT less attachment	13 260 kg (29,230 lb)	13 260 kg (29,230 lb)	13 360 kg (30,360 lb)

POWER

ENGINE Tier 4f	Tigercat FPT N67 Tier 4f	Tigercat FPT N67 Tier 4f	Tigercat FPT N67 Tier 4f
▶ RATED	151 kW (203 hp) @ 2,200 rpm	184 kW (247 hp) @ 2,200 rpm	212 kW (285 hp) @ 2,200 rpm
▶ PEAK	165 kW (221 hp) @ 1,900 rpm	189 kW (254 hp) @ 2,000 rpm	230 kW (308 hp) @ 2,000 rpm
ENGINE Tier 2	Tigercat FPT N67 Tier 2	Tigercat FPT N67 Tier 2	Tigercat FPT N67 Tier 2
▶ RATED	159 kW (213 hp) @ 2,100 rpm	186 kW (250 hp) @ 2,100 rpm	205 kW (275 hp) @ 2,100 rpm
▶ PEAK	165 kW (221 hp) @ 1,900 rpm	189 kW (254 hp) @ 2,000 rpm	230 kW (309 hp) @ 2,000 rpm
COOLING	Cross-flow; Side-by-side Aluminum radiator, oil cooler, charge air cooler and A/C condensor	Cross-flow; Side-by-side Aluminum radiator, oil cooler, charge air cooler and A/C condensor	Cross-flow; Side-by-side Aluminum radiator, oil cooler, charge air cooler and A/C condensor
FAN	Hydraulically driven; Automatic variable speed with automatic reversing cycle	Hydraulically driven; Automatic variable speed with automatic reversing cycle	Hydraulically driven; Automatic variable speed with automatic reversing cycle
FUEL CAPACITY	303 L (80 US gal)	303 L (80 US gal)	340 L (90 US gal)
DEF CAPACITY	46 L (12 US gal)	46 L (12 US gal)	46 L (12 US gal)

POWER TRAIN

TRANSMISSION	Tigercat WideRange® drive Variable speed hydrostatic (2) Piston motors, infinitely variable	Tigercat WideRange® drive Variable speed hydrostatic (2) Piston motors, infinitely variable	Tigercat WideRange® drive Variable speed hydrostatic (2) Piston motors, infinitely variable
▶ Optional	2-Speed mechanical shift	2-Speed mechanical shift	N/A
AXLES	Tigercat IB15, inboard planetary, barrel differential Front fixed; Rear oscillating +/-15°	Tigercat IB15, inboard planetary, barrel differential Front fixed; Rear oscillating +/-15°	Tigercat IB15, inboard planetary, barrel differential Front fixed; Rear oscillating +/-15°
DIFFERENTIAL LOCKS	Independent front and rear	Independent front and rear	Independent front and rear

TOP SPEED

WIDERANGE	16 km/h (10 mph)	16 km/h (10 mph)	16 km/h (10 mph)
2-SPEED LOW	9 km/h (5.5 mph)	9 km/h (5.5 mph)	N/A
2-SPEED HIGH	25 km/h (15.5 mph)	25 km/h (15.5 mph)	N/A

HYDRAULIC SYSTEM

PUMP, DRIVE	Piston	Piston	Piston
PUMP, BOOM	Gear	Gear	Gear
PUMP, STEERING	Gear	Gear	Gear
PUMP, SAW	Piston	Piston	Piston
PUMP, FAN	Gear	Gear	Gear
RESERVOIR	160 L (42 US gal)	160 L (42 US gal)	178 L (47 US gal)
FILTRATION	(4) Spin-on, 7 micron full flow	(4) Spin-on, 7 micron full flow	(4) Spin-on, 7 micron full flow
CYLINDERS, BOOM	(4) 115 mm (4.5 in) bore lift and tilt	(4) 115 mm (4.5 in) bore lift and tilt	(4) 115 mm (4.5 in) bore lift and tilt
CYLINDERS, STEER	(2) 75 mm (3 in) bore	(2) 75 mm (3 in) bore	(2) 75 mm (3 in) bore

BRAKES

DYNAMIC BRAKING	Hydrostatic	Hydrostatic	Hydrostatic
SECONDARY BRAKES	Enclosed, oil cooled	Enclosed, oil cooled	Enclosed, oil cooled
PARK BRAKE	Driveline mounted wet disc Spring applied, hydraulic release	Driveline mounted wet disc Spring applied, hydraulic release	Driveline mounted wet disc Spring applied, hydraulic release

TIRES

STANDARD	30.5Lx32,26 (narrow offset)	30.5Lx32,26 (wide offset)	30.5Lx32,26 (wide offset)
▶ Optional	28Lx26,20; 67x34-25,22 73x44-32,20	28Lx26,20; 67x34-25,22 73x44-32,20	28Lx26,20; 67x34-25,22 73x44-32,20

720G
724G
726G

ELECTRICAL

BATTERY	(2) 12 v	(2) 12 v	(2) 12 v
ALTERNATOR	80 amp, 24 v	80 amp, 24 v	80 amp, 24 v
SYSTEM VOLTAGE	24 v	24 v	24 v

OPERATOR'S STATION

CAB	Insulated, pressurized and isolation mounted; (2) doors with sliding tempered glass windows and hinged steel mesh screens Removable steel and polycarbonate skylight; A/C, heater, defroster and pressurizer; Forward sloping polycarbonate windshield AM/FM digital stereo with CD player; Bluetooth® audio and hands-free calling; 12 v power point; 24 v lighter LED lighting package		
SEAT	Air ride suspension, fully adjustable; Armrest mounted joysticks		
OPERATOR CONTROLS	Hydraulic pilot; Joystick for boom and steering; (2) Foot pedals for forward/reverse travel		

OTHER STANDARD EQUIPMENT

Pressurized water system	Pressurized water system	Pressurized water system
Back-up alarm	Back-up alarm	Back-up alarm
Fuel gauge	Fuel gauge	Fuel gauge
Hydraulic oil hand fill pump	Hydraulic oil hand fill pump	Hydraulic oil hand fill pump
Fire extinguisher	Fire extinguisher	Fire extinguisher
Fire detection system	Fire detection system	Fire detection system
Drive speed limiter control	Drive speed limiter control	Drive speed limiter control
Joystick clamp arm control	Joystick clamp arm control	Joystick clamp arm control
Rear camera system Accumulation mode selection(s)	Rear camera system Accumulation mode selection(s)	Rear camera system Accumulation mode selection(s)
LogOn™ local wifi machine monitoring system	LogOn™ local wifi machine monitoring system	LogOn™ local wifi machine monitoring system

OPTIONAL EQUIPMENT

High output LED lighting package	High output LED lighting package	High output LED lighting package
CB radio	CB radio	CB radio
Quick wheel steering	Quick wheel steering	Quick wheel steering
RemoteLog® telematics system	RemoteLog® telematics system	RemoteLog® telematics system
Pilot hydraulic foot pedal clamp arm control	Pilot hydraulic foot pedal clamp arm control	Pilot hydraulic foot pedal clamp arm control

ALL ENGINE POWER VALUES ARE QUOTED AT NET POWER, AS PER SAE J1349.
TIGERCAT RESERVES THE RIGHT TO AMEND THESE SPECIFICATIONS AT ANY TIME WITHOUT NOTICE.
WEIGHTS AND DIMENSIONS MAY VARY SUBJECT TO MACHINE OPTIONS AND CONFIGURATIONS.
FOR THE MOST CURRENT SPECIFICATIONS PLEASE REFER TO THE TIGERCAT WEBSITE OR MOBILE APP.

THE 720G



THE 724G



THE 726G



EMAIL	comments@tigercat.com
PHONE	519.753.2000
WEBSITE	www.tigercat.com
ADDRESS	54 Morton Ave. East, Brantford, Ontario Canada, N3R 7J7
MAIL	Box 637 N3T 5P9

© 2001 - 2020 Tigercat International Inc. All Rights Reserved. TIGERCAT, WIDERANGE, TURNAROUND, ER, EHS, LOW-WIDE, TEC, REMOTELOG, and their respective logos, TOUGH RELIABLE PRODUCTIVE, TIGERCAT TV, "Tigercat Orange" and BETWEEN THE BRANCHES, as well as corporate and product identity, are trademarks of Tigercat International Inc., and may not be used without permission. TIGERCAT, TURNAROUND, WIDERANGE, EHS, LOW-WIDE, ER and REMOTELOG, and their respective logos are registered trademarks of Tigercat International Inc.