



The 5195 is a robust directional felling head for track carriers. It is well suited to felling, pre-bunching, shovel logging, stacking and sorting. The 5195 is versatile for handling large timber and bunches.

## BENEFITS AND ADVANTAGES:

### Heavy-duty reinforced chassis and arms

- Built for heavy duty applications and matched to the productivity and duty cycle of Tigercat carriers
- Large pins and durable cushioned cylinders

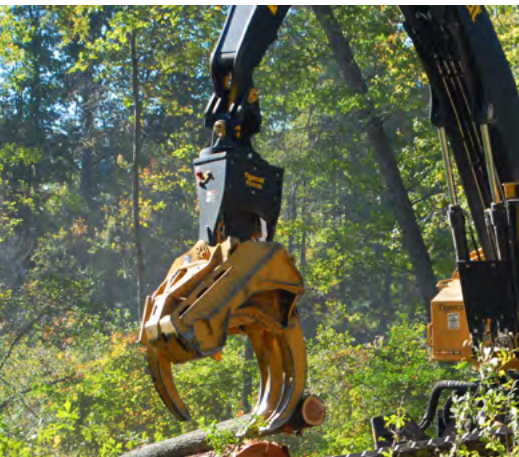
### Dual cylinder arm design for maximum control

- Superior grip and control of oversize trees and bunches
- Flow divider for timed picking
- Grapple-type arms for excellent performance in selective felling and shovel logging applications

### Continuous rotation, high capacity rotator

- Superior positioning control for felling and shoveling

High capacity rotator with clean hose routing and continuous rotation.



### Durable, simple Tigercat saw unit

- Easy to service with quick bar and chain changes
- Adjustable proportional chain oil pump
- High performance 60 cc saw motor

### No electrical wiring to head; simplified valving

- Improved reliability and simpler service
- No accumulators required
- Standard installation packages for Tigercat carriers

### Custom in-cab control for Tigercat carriers

- Adjustable tilt, grapple and sawing functions
- Settings can be optimized to suit operator and application

Excellent performance in pre-bunching and high cycle shovel logging applications.



Fast cutting and excellent control of large diameter timber.



# SPECIFICATIONS

## DIMENSIONS

HEIGHT to boom pin .....	2 045 mm (80.5 in)
WIDTH arms open .....	2 020 mm (79.5 in)
DEPTH arms open .....	1 945 mm (76.5 in)
WEIGHT .....	2 610 kg (5,740 lb)

## CUTTING

SAW BAR .....	1 140 mm (45 in)	
SAW MOTOR .....	Piston, high pressure, 60 cc	
CHAIN TENSION .....	Manual chain tension Optional .....	Auto chain tension
MAXIMUM CUT .....	950 mm (37.5 in)	
CHAIN .....	19 mm (0.75 in) pitch, 11H	
CHAIN OIL CAPACITY .....	23 L (6 US gal) filtered	

## ROTATOR

ROTATE BEARING .....	High capacity, 360° continuous rotation External pinion drive Hydraulic braking control
----------------------	---

## GRAPPLE ARMS

MAXIMUM OPENING .....	1 380 mm (54 in)
MINIMUM CLOSED DIAMETER .....	110 mm (4.3 in)
GRAPPLE CAPACITY .....	0,56 m <sup>2</sup> (6.0 ft <sup>2</sup> )

## HYDRAULIC CYLINDERS

GRAPPLE ARMS .....	(2) 95 mm (3.75 in) bore, cushioned
TILT .....	(2) 70 mm (2.75 in) bore

TIGERCAT RESERVES THE RIGHT TO AMEND THESE SPECIFICATIONS AT ANY TIME WITHOUT NOTICE

## Durable construction for tough applications...



High capacity continuous rotation  
Neat, well protected hose routing

Grapple-type arm design for positive control  
Durable cushioned Tigercat cylinders  
Large pins

Simple, reliable saw unit  
Powerful, high pressure piston saw motor  
Custom control manifold with adjustable oiler

© 2001 - 2015 Tigercat International Inc. All Rights Reserved. TIGERCAT, WIDERANGE, TURNAROUND, ER, EHS, and TEC, their respective logos, TOUGH RELIABLE PRODUCTIVE, TIGERCAT TV, "Tigercat Orange" and BETWEEN THE BRANCHES, as well as corporate and product identity, are trademarks of Tigercat International Inc., and may not be used without permission. TIGERCAT, TURNAROUND, and ER, and their respective logos are registered trademarks of Tigercat International Inc.

54 Morton Ave. East  
Brantford, Ontario  
Canada, N3R 7J7  
Mail: Box 637 N3T 5P9

E-mail: [comments@tigercat.com](mailto:comments@tigercat.com)  
Internet: [www.tigercat.com](http://www.tigercat.com)  
Tel: (519) 753-2000  
Fax: (519) 753-8272

**Tigercat**<sup>®</sup>