

## 480B MULCHER

The 480B is a powerful, robust mulcher, able to tackle the toughest terrain with ease. Tigercat heavy duty build quality provides superior durability with high uptime for large-scale, time-sensitive right-of-way and site preparation projects.



### BENEFITS AND ADVANTAGES:

#### Powerful tractive effort

- Efficient, responsive closed loop track drive system
- Excellent performance in challenging terrain

#### Oscillating track system

- Heavy duty track frames and mounting system

#### Efficient, high capacity cooling system

- Automatic variable speed fan for improved fuel economy
- Reversing cycle combats airborne dust and debris

#### High-lift boom geometry

- Achieves high production in tough terrain, slopes and gullies

#### Tigercat heavy duty build quality

- Very reliable with high uptime for time-sensitive projects

#### Excellent access to daily service points

- Tilting cab for additional access to components

#### Quiet, climate-controlled operator's station

- Extreme duty, heated and cooled, air-ride seat
- Electronic control system with colour LCD display
- Insulated and isolation mounted
- High output heater and A/C
- Ergonomic, armrest mounted joystick steer and drive

#### Equipped with the Tigercat 4061 mulching head

- Choice of horizontal drum type mulching attachments requiring up to 358 kW (480 hp)



EQUIPPED WITH THE  
TIGERCAT 4061 MULCHING HEAD  
Choice of horizontal drum type mulching  
attachments requiring up to 358 kW (480 hp)

Excellent performance in challenging terrain.



Neat, clean engine compartment with large doors for easy access to daily service points.



Tilting cab for easy access to hydraulic components.

**Tigercat**  
by **FPT**  
POWERTRAIN TECHNOLOGIES

## TIGERCAT FPT ENGINE TECHNOLOGY

Tigercat FPT Tier 4f engines offer quick load response, low operating costs and high power density, combined with excellent fuel economy.

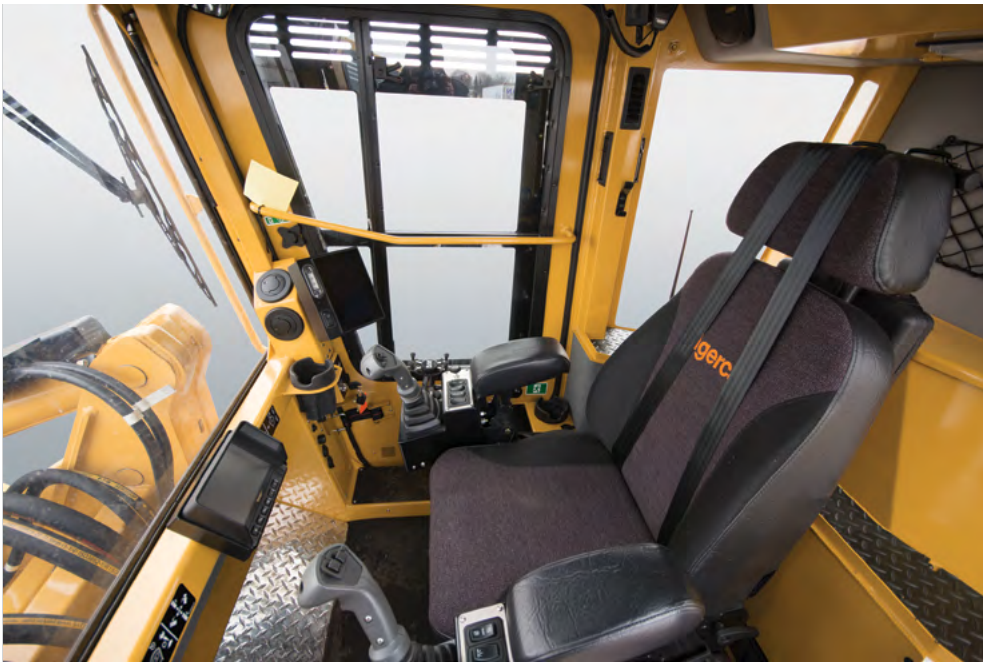
The second-generation common rail fuel injection system provides top performance in the most demanding applications.

Tigercat FPT Tier 4f emission technology is simple and reliable. The Tier 4f configuration meets emission standards without complex add-on components. The key is the patented selective catalyst reduction (SCR) after-treatment system.

Tigercat FPT engines offer improved reliability and lower long-term maintenance costs – the clear power choice for forestry and off-road industrial applications.

TIGERCATPOWER.  
TIGERCATSUPPORT.™





Well appointed operator's station, featuring large LCD touch screen, front/rear cameras, AM/FM CD stereo with Bluetooth® Audio and hands free calling.

High-lift boom geometry.



## 480B

### DIMENSIONS less attachment

LENGTH	5 820 mm (229 in)
SHIPPING HEIGHT	3 330 mm (131 in)
GROUND CLEARANCE	560 mm (22 in)
WIDTH	2 590 mm (102 in)
WEIGHT	22 345 kg (49,260 lb)
GROUND PRESSURE	36.5 kPa (5.3 psi)

### POWER

ENGINE Tier 4f	Tigercat FPT C13 Tier 4f
▶ RATED	411 kW (550 hp) @ 1,800 rpm
▶ PEAK	411 kW (550 hp) @ 1,800 rpm
AIR FILTRATION	Precleaner and 2-stage air cleaner
COOLING	Aluminum side-by-side radiator, oil cooler, charge air cooler and A/C condenser Swing-out intake debris screen
FAN	Hydraulic automatic variable speed, reversible
FUEL CAPACITY	850 L (225 US gal)
DEF CAPACITY Tier 4f	135 L (80 US gal)

### TOP SPEED

FORWARD/REVERSE	6.5 km/h (4.0 mph)
-----------------	--------------------

### HYDRAULIC SYSTEM

PUMP, ATTACHMENT	Piston
PUMP, TRACK	(2) Piston, closed loop
PUMP, BOOM	Piston
RESERVOIR	295 L (78 US gal)
FILTRATION, MAIN HYDRAULICS	(5) Spin-on, 7 micron full flow; (1) Water absorbing
FILTRATION, CHARGE/PILOT	(3) Spin-on, 6 micron full flow
CYLINDERS, BOOM	(4) 115 mm (4.5 in) bore

### UNDERCARRIAGE

TRACK FRAMES	D6 heavy-duty forestry; Integral track guides, ramp angles, oscillation
TRACK CHAIN	D6 203 mm (8 in) pitch sealed and greased
FINAL DRIVE	(2) Axial piston motors; Infinitely variable speed
TRACTIVE EFFORT	214 kN (48,000 lbf)
GEARBOX	Triple reduction planetary with brake
FRONT IDLER	Hydraulic track adjuster; Spring shock absorber
ROLLERS, UPPER	(3) D6 single flange excavator type
ROLLERS, LOWER	(3) D6 single flange tractor type (5) D6 double flanged tractor type
TRACK SHOE	800 mm (32 in) single grouser
▶ Optional	800 mm (32 in) double grouser

### BRAKES

TRACK	Friction disc Automatic spring applied, hydraulic release
-------	--

### OPERATOR'S STATION

CAB	Fully enclosed, insulated and isolation mounted (2) Doors and roof exit Air conditioner heater and pressurizer Polycarbonate front and rear glazing Forward sloping windshield Sliding tempered glass side windows with guards AM/FM CD stereo with Bluetooth® Audio and hands free calling
SEAT	Extreme duty air ride, fully adjustable, heated and cooled; Armrest mounted joysticks

### OPERATOR CONTROLS

	Electronic for travel/steering/boom, joystick control Electronic travel speed control limiter Cruise control; Electronic control system with colour LCD display screen for machine monitoring and function adjustment
--	---

### ELECTRICAL

BATTERY	(2) 12 v
ALTERNATOR	110 amp, 24 v
SYSTEM VOLTAGE	24 v

### OTHER STANDARD EQUIPMENT

	Back-up alarm; Rear camera Hydraulic reservoir hand fill pump Fire extinguisher; Air compressor LED service lights; LED working lights; Fire detection
--	---

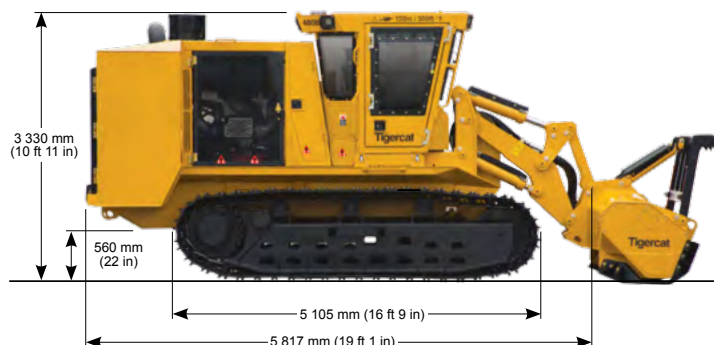
### OPTIONAL EQUIPMENT

	Recovery winch; Ground level fueling system CB radio; Fire suppression Cold weather aids (110 VAC or diesel powered) RemoteLog™ telematics system
--	--

### MULCHING HEAD

	Tigercat 4061 mulching head Flexible hydraulic system Choice of horizontal drum type mulching attachments requiring up to 358 kW (480 hp)
--	---

## 480B MULCHER



**TIGERCATPOWER.**  
**TIGERCATSUPPORT.™**

ALL ENGINE POWER VALUES ARE QUOTED AT NET POWER, AS PER SAE J1349. TIGERCAT RESERVES THE RIGHT TO AMEND THESE SPECIFICATIONS AT ANY TIME WITHOUT NOTICE

EMAIL	comments@tigercat.com
PHONE	519.753.2000
WEBSITE	www.tigercat.com
ADDRESS	54 Morton Ave. East, Brantford, Ontario Canada, N3R 7J7
MAIL	Box 637 N3T 5P9

© 2001 - 2017 Tigercat International Inc. All Rights Reserved. TIGERCAT, WIDERANGE, TURNAROUND, ER, EHS, LOW-WIDE and TEC, their respective logos, TOUGH RELIABLE PRODUCTIVE, TIGERCAT TV, "Tigercat Orange" and BETWEEN THE BRANCHES, as well as corporate and product identity, are trademarks of Tigercat International Inc., and may not be used without permission. TIGERCAT, TURNAROUND, WIDERANGE, EHS and ER, and their respective logos are registered trademarks of Tigercat International Inc.