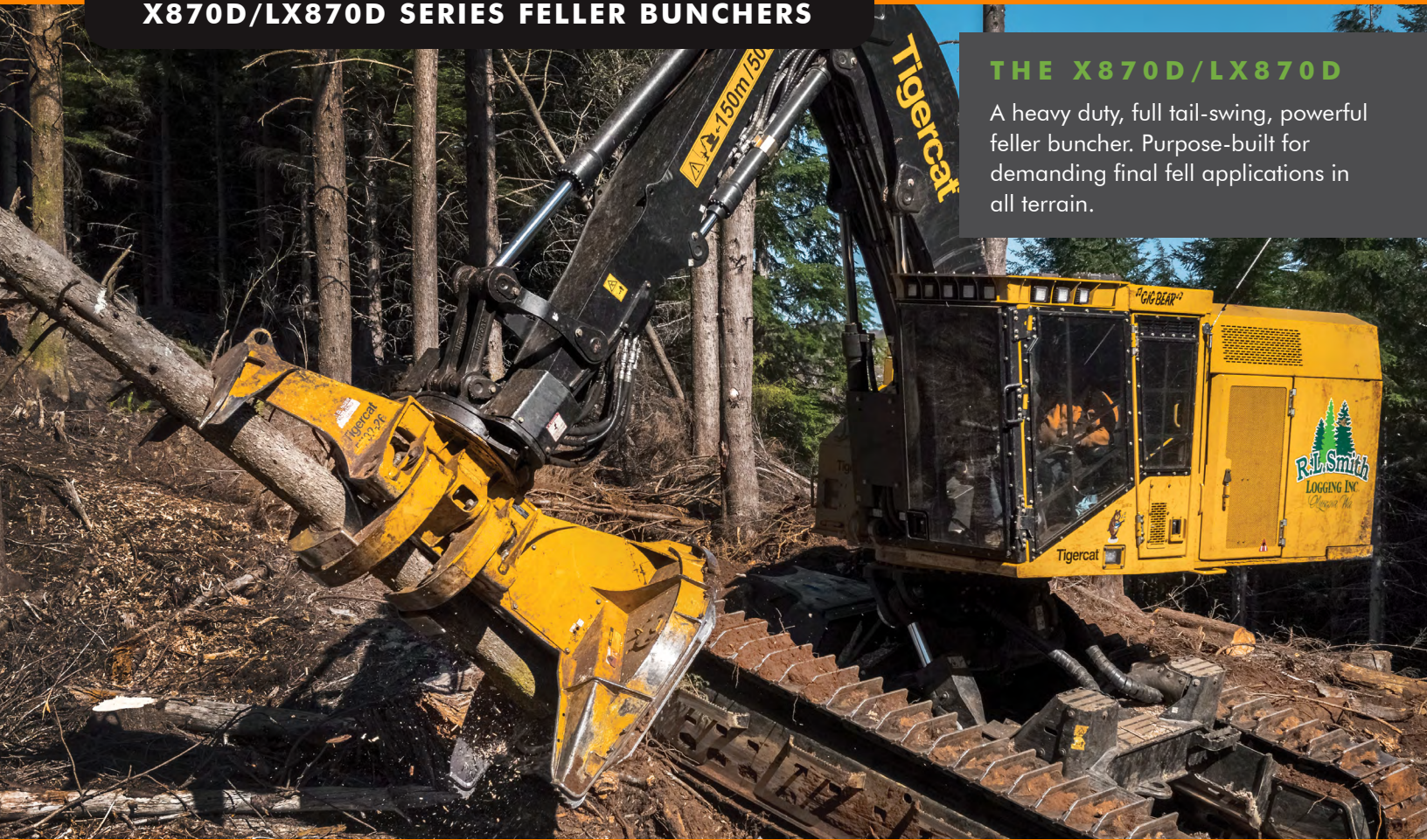


X870D/LX870D SERIES FELLER BUNCHERS

THE X870D/LX870D

A heavy duty, full tail-swing, powerful feller buncher. Purpose-built for demanding final fell applications in all terrain.



BENEFITS AND ADVANTAGES:

Powerful, efficient Tigercat FPT Tier 4f engine

- Extremely fuel efficient
- Simple, SCR emissions control technology

High performance closed loop track drive system

- Closed loop track drives offer greater speed and performance
- Increased hydraulic system efficiency when climbing, turning and multi-functioning

Efficient high capacity cooling system

- Automatic variable fan speed for improved fuel efficiency
- Automatic reversing cycle to easily clean the heat exchangers
- Cooling air is drawn from the rear, away from saw discharge

Easy access to components and daily service

- Fully opening, power operated clamshell style engine enclosure
- Side platform for daily service access
- Easy access to all sides of the engine
- Shields separate engine from hydraulic pumps and valves

Highly durable design and construction

Redesigned and enhanced operator's station

- Structurally reconfigured for improved visibility
- Full length front window for clear view of the tracks
- Upgraded interior finish
- Extreme duty air-ride suspension seat for improved comfort
- SkyVIEW and RearVIEW camera systems for year round visibility

Tigercat-built extreme duty undercarriage

- Longer track side frames increase stability on steep slopes
- Super-duty leveling system built with large pins and cylinders, tapered roller bearings and thick steel plate

ER boom technology

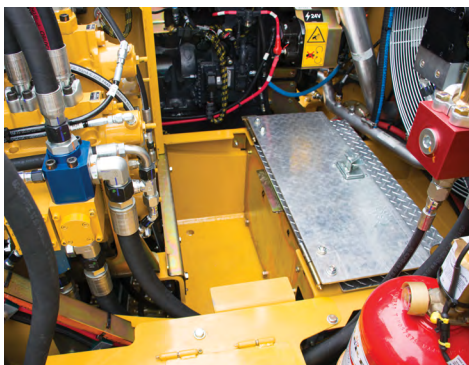
- Tigercat's exclusive ER technology improves fuel efficiency and increases productivity, while reducing operator fatigue
- Non-ER mode provides increased stick force
- Structural parts are well proven in high cycle applications

Twin swing drive system, powerful swing torque

- Higher swing torque, lower gear tooth loads
- Smooth and quiet swing operation

Extremely stable with powerful lift capacity for high production final felling in tough terrain

ACCESSIBILITY



Large tool storage area.



Enhanced cab with expanded sight lines and an upgraded interior finish. SkyVIEW and RearVIEW camera system.



Easy access to filters simplifies maintenance routines.

HIGH SPEED, HIGH PERFORMANCE, HIGH EFFICIENCY

Tigercat's patented ER[®] technology allows the machine operator to extend and retract the boom on a horizontal plane smoothly and quickly using a single joystick. But the benefit goes beyond reducing operator fatigue.

Key to ER technology is reduced energy consumption. The ER system transfers energy back and forth between the main and the stick boom functions, reducing the total energy required to move the boom system. This reduces demands for power, pump flow and system cooling. The result is increased productivity and reduced fuel consumption per unit of production.

This machine model has 2-Mode ER, allowing the operator to switch the boom functions between ER-Mode and Non-ER.

ER[®]
technology
ENERGY RECOVERY
EASY REACH
2 - MODE

The clamshell style retracting roof enclosure provides clear and easy access to the engine, valves and cooling system components, and a side platform for daily service access.



Tigercat[®]
by **FPT**
POWERTRAIN TECHNOLOGIES

TIGERCAT FPT ENGINE TECHNOLOGY

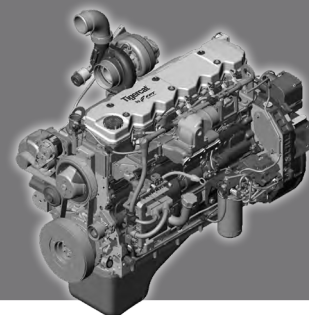
Tigercat FPT Tier 4f engines offer quick load response, low operating costs and high power density, combined with excellent fuel economy.

The second-generation common rail fuel injection system provides top performance in the most demanding applications.

Tigercat FPT Tier 4f emission technology is simple and reliable. The Tier 4f configuration meets emission standards without complex add-on components. The key is the patented selective catalyst reduction (SCR) after-treatment system.

Tigercat FPT engines offer improved reliability and lower long-term maintenance costs – the clear power choice for forestry and off-road industrial applications.

TIGERCATPOWER.
TIGERCATSUPPORT.



SPECIFICATIONS

X870D

LX870D

DIMENSIONS WITH STANDARD TRACK SHOE

WIDTH with steps	3 390 mm (133 in)	3 440 mm (135 in)
LENGTH less boom	5 555 mm (219 in)	5 335 mm (210 in)
HEIGHT	3 390 mm (133 in)	3 740 mm (147 in)
GROUND CLEARANCE	710 mm (28 in)	680 mm (27 in)
WEIGHT less head/adaptor	33 565 kg (74,000 lb)	36 680 kg (80,870 lb)
TAIL SWING over side	1 590 mm (62 in)	1 560 mm (61 in)

POWER

ENGINE Tier 4f	Tigercat FPT C87 Tier 4f	Tigercat FPT C87 Tier 4f
► RATED	245 kW (330 hp) @ 1,900 rpm	245 kW (330 hp) @ 1,900 rpm
► PEAK	245 kW (330 hp) @ 1,900 rpm	245 kW (330 hp) @ 1,900 rpm
AIR FILTRATION	Precleaner, 2-stage engine air cleaner	Precleaner, 2-stage engine air cleaner
COOLING	Aluminum side-by-side radiator, oil cooler, charge air cooler, A/C condensor; Removable intake debris screen	Aluminum side-by-side radiator, oil cooler, charge air cooler, A/C condensor; Removable intake debris screen
FAN	Hydraulic driven automatic variable speed, reversible	Hydraulic driven automatic variable speed, reversible
FUEL CAPACITY usable	1 085 L (287 US gal)	1 085 L (287 US gal)
DEF CAPACITY	135 L (35 US gal)	135 L (35 US gal)

HYDRAULIC SYSTEM

PUMP, MAIN	Piston	Piston
PUMP, FAN	Piston	Piston
PUMP, TRACK	(2) Piston, closed loop	(2) Piston, closed loop
PUMP, SAW	Piston	Piston
PUMP, CLAMP/ACCUM.	Piston	Piston
PUMP, CHARGE/PILOT	Gear	Gear
PUMP, CASE	Gear	Gear
RESERVOIR	300 L (80 US gal)	300 L (80 US gal)
FILTRATION, MAIN HYDRAULICS	(5) Spin-on, 7 micron full flow; (1) Water absorbing	(5) Spin-on, 7 micron full flow; (1) Water absorbing
FILTRATION, CHARGE/PILOT	(2) Spin-on, 6 micron full flow	(2) Spin-on, 6 micron full flow
FILTRATION, CASE	(1) Spin-on, 6 micron full flow	(1) Spin-on, 6 micron full flow
CYLINDERS, HOIST	(2) 120 mm (4.7 in) bore	(2) 120 mm (4.7 in) bore
CYLINDERS, STICK/ER	(2) 110 mm (4.3 in) bore	(2) 110 mm (4.3 in) bore
CYLINDER, TILT	130 mm (5.1 in) bore	130 mm (5.1 in) bore
CYLINDERS, LEVELING	N/A	(2) 180 mm (7 in) bore
HORSE POWER CONTROL	Electric speed sensing; All-speed antistall	Electric speed sensing; All-speed antistall

UNDERCARRIAGE

TRACK FRAMES	R7-150 Super-duty forestry, integral track guides, ramp angles	R7-163L Super-duty forestry, integral track guides, ramp angles
TRACK CHAIN	FH400 215 mm (8.5 in) pitch	FH400 215 mm (8.5 in) pitch
FINAL DRIVE	(2) Axial piston motors, Infinitely variable speed	(2) Axial piston motors, Infinitely variable speed
TRACTIVE EFFORT	307 kN (69,000 lbf)	343 kN (77,100 lbf)
GEARBOX	Triple reduction planetary with brake	Triple reduction planetary with brake
FRONT IDLER	Hydraulic track adjuster; Spring shock absorber	Hydraulic track adjuster; Spring shock absorber
SLIDES, UPPER	Replaceable, bolt-on	Replaceable, bolt-on
► Optional	N/A	N/A
ROLLERS, LOWER	(9) FH400 single/double flange excavator	(10) FH400 single/double flange excavator
TRACK SHOE	610 mm (24 in) single grouser	610 mm (24 in) single grouser
► Optional	710 mm (28 in) single grouser	710 mm (28 in) single grouser
LEVELING	N/A	20° forward, 7° rear; +/-15° side

TOP SPEED

LOW RANGE	2,3 km/h (1.4 mph)	1,8 km/h (1.1 mph)
HIGH RANGE	4,8 km/h (3.0 mph)	4,2 km/h (2.6 mph)

ER® BOOM SYSTEM WITH 30° WRIST, 5702 SAW

MAXIMUM CUT RADIUS	8 460 mm (333 in)	8 460 mm (333 in)
MINIMUM CUT RADIUS	4 800 mm (189 in)	4 800 mm (189 in)
BARE PIN LIFT full reach	8 435 kg (18,600 lb)	8 435 kg (18,600 lb)

X870D

LX870D

BRAKES

TRACK	Friction disc; Automatic spring applied, hydraulic release	Friction disc; Automatic spring applied, hydraulic release
SWING	Friction disc; Manual spring applied, hydraulic release	Friction disc; Manual spring applied, hydraulic release

ROTATING UPPER

SWING DRIVE	7.5 rpm variable speed; 360° continuous rotation; Double reduction, twin swing drive planetary gearboxes; twin piston swing motors	
SWING BEARING	1 190 mm (47 in) ball circle diameter	
ENCLOSURE	Perforated plate on doors for ventilation; Hydraulically operated engine enclosure, manual backup Rear air intake for cooling system and engine; Vandal protection; Smooth exterior	

OPERATOR'S STATION

CAB	Insulated, pressurized and isolation mounted A/C, heater, defroster SkyVIEW and RearVIEW camera system Full length polycarbonate windshield/entry door Polycarbonate right and left side windows One-piece polycarbonate side door window with steel guarded upper sliding section for ventilation AM/FM digital stereo and auxiliary input port Bluetooth® audio and hands-free calling; (2) Power points	
OPERATOR CONTROLS	Hydraulic proportional for boom/travel/swing with electronic track speed control limiter Electronic for clamp arms/accumulating arms/wrist Electric switch for swing brake Electronic control system with colour LCD display screen for machine monitoring and function adjustment	
SEAT	Full suspension air ride, fully adjustable with angled mounting Armrest mounted Tigercat joysticks	

ELECTRICAL

BATTERY	(2) 12 AGM	(2) 12 AGM
ALTERNATOR	110 amp, 24 v	110 amp, 24 v
SYSTEM VOLTAGE	24 v	24 v
LIGHTING	(15) LED; (4) LED service lights, engine enclosure	(15) LED; (4) LED service lights, engine enclosure
► Optional	(11) High output LED, (4) LED; (4) LED service lights, engine enclosure	(11) High output LED, (4) LED; (4) LED service lights, engine enclosure

OTHER STANDARD EQUIPMENT

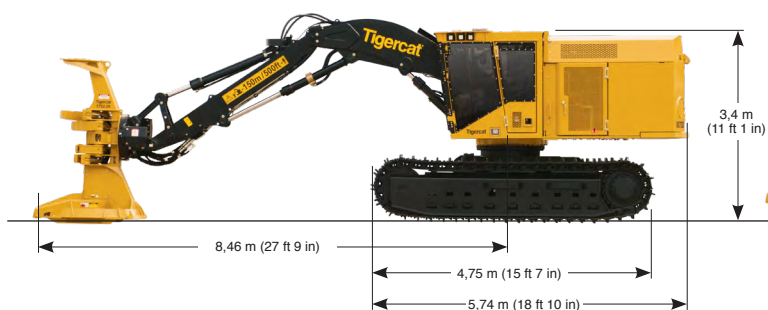
Power-link; Alarm for track movement; LogOn™ local wifi machine monitoring system

OPTIONAL EQUIPMENT

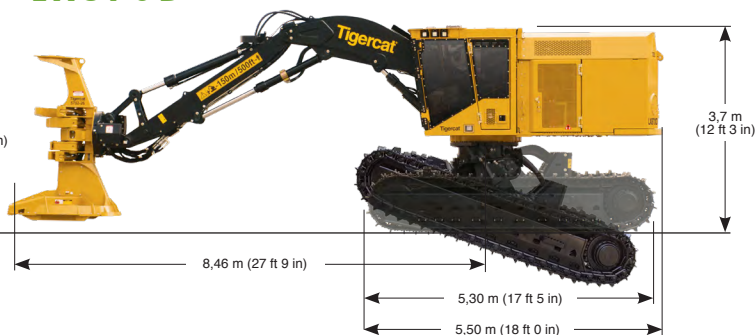
High rotation wrists: 110°, 340°; Bolt-on toolbox
Cold weather kit; RemoteLog® telematics system

High rotation wrists: 110°, 340°; Bolt-on toolbox
Cold weather kit; Auto leveling (R7-163L undercarriage only)
RemoteLog® telematics system

X870D



LX870D



ALL ENGINE POWER VALUES ARE QUOTED AT NET POWER, AS PER SAE J1349.

TIGERCAT RESERVES THE RIGHT TO AMEND THESE SPECIFICATIONS AT ANY TIME WITHOUT NOTICE. WEIGHTS AND DIMENSIONS MAY VARY SUBJECT TO MACHINE OPTIONS AND CONFIGURATIONS. FOR THE MOST CURRENT SPECIFICATIONS PLEASE REFER TO THE TIGERCAT WEBSITE OR MOBILE APP. TIGERCAT PRODUCTS MAY BE COVERED BY ONE OR MORE OF THE FOLLOWING US OR CANADIAN PATENTS, OR CORRESPONDING PATENTS IN OTHER COUNTRIES. REFER TO VIRTUAL PATENT MARKINGS: WWW.TIGERCAT.COM/PATENTS.

EMAIL	comments@tigercat.com
PHONE	519.753.2000
WEBSITE	www.tigercat.com
ADDRESS	54 Morton Ave. East, Brantford, Ontario Canada, N3R 7J7
MAIL	Box 637 N3T 5P9

© 2001 - 2020 Tigercat International Inc. All Rights Reserved. TIGERCAT, WIDERANGE, TURNAROUND, ER, EHS, LOW-WIDE, TEC, REMOTELOG, and their respective logos, TOUGH RELIABLE PRODUCTIVE, TIGERCAT TV, "Tigercat Orange" and BETWEEN THE BRANCHES, as well as corporate and product identity, are trademarks of Tigercat International Inc., and may not be used without permission. TIGERCAT, TURNAROUND, WIDERANGE, EHS, LOW-WIDE, ER and REMOTELOG, and their respective logos are registered trademarks of Tigercat International Inc.