

## H250D PROCESSOR



### THE H250D

Well suited to roadside processing and debarking applications, the H250D offers advantages over excavator conversions including higher cooling capacity and harvester head optimized hydraulics.

## BENEFITS AND ADVANTAGES:

### Powerful, efficient Tigercat FPT engine

- Extremely quiet and fuel efficient

### Efficient load sensing hydraulic system

### Dedicated, energy recovery swing system

- Closed loop drive feeds power back to the engine when swing decelerates, reducing fuel consumption and recovering energy for other machine functions
- Dedicated swing system for quick cycles and enhanced machine performance in processing applications

### High capacity swing system

- Large diameter, high capacity bearing
- High torque starts and smooth stops

### Powerful strength-to-weight optimized boom

- Robust, well-protected cylinders and large diameter pins
- Designed for heavy duty processing

### Wide stance, forest duty undercarriage

- Long track frames for excellent stability and flotation
- High clearance carbody and powerful tractive effort for excellent infield mobility
- Designed and built by Tigercat for full forest duty cycles

### Excellent service access

- Valves are conveniently located under the walk-up platform
- Platform access to daily service points
- Swing-out door to access hydraulic pumps and filters

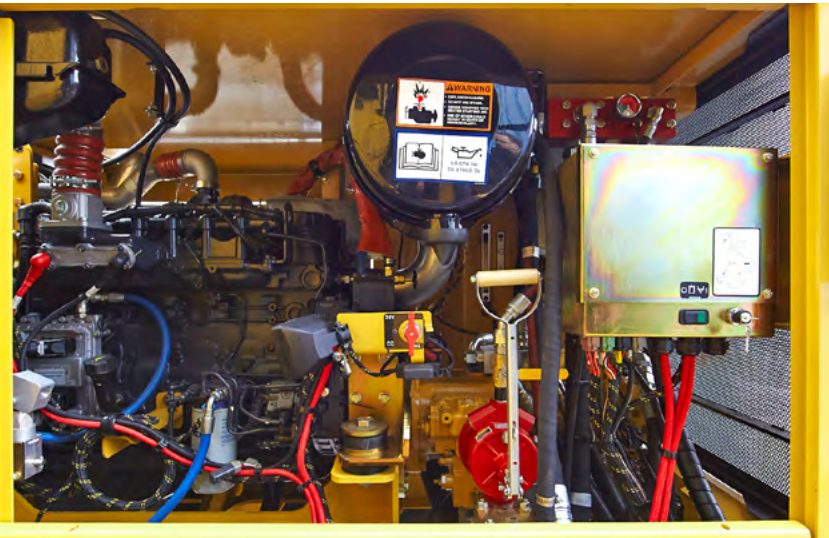
### Spacious, ergonomic operator's station

- Very quiet operating environment (64 - 68 dB)
- Excellent climate control, heated/cooled seats, window blinds
- High visibility instrumentation and engine monitoring system

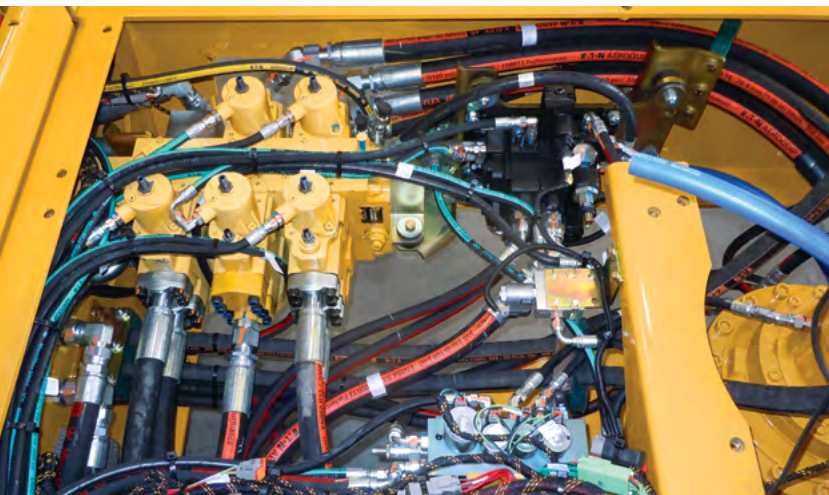
# ACCESSIBILITY

## H250D

The H250D is a superior track carrier with high clearance, powerful tractive effort and excellent stability. The undercarriage is designed and built for full forest duty. The combination of high horsepower and efficient hydraulics provide low cost per tonne operation in high production processing applications, using heads up to 2 900 kg (6,400 lb).



Excellent access to the engine and all daily service points.



All valves are located underneath the walk-up platform for clear and easy access with neat hydraulic and electrical routings.



A quiet, spacious, ergonomic operating environment ensures that the operator concentrates full attention on the essential tasks of merchandising and processing.

**Tigercat**  
by **FPT**  
POWERTRAIN TECHNOLOGIES

### TIGERCAT FPT ENGINE TECHNOLOGY

Tigercat FPT Tier 2 and Tier 4f engines offer quick load response, low operating costs and high power density, combined with excellent fuel economy.

The second-generation common rail fuel injection system provides top performance in the most demanding applications.

Tigercat FPT Tier 4f emission technology is simple and reliable. The Tier 4f configuration meets emission standards without complex add-on components. The key is the patented selective catalyst reduction (SCR) after-treatment system.

Tigercat FPT engines offer improved reliability and lower long-term maintenance costs – the clear power choice for forestry and off-road industrial applications.

TIGERCATPOWER.  
TIGERCATSUPPORT.



# SPECIFICATIONS

## H250D

### DIMENSIONS

LENGTH less boom and steps	5 260 mm (207 in)
WIDTH	3 430 mm (135 in)
HEIGHT	4 320 mm (170 in)
▶ With cab tilted for transport	3 530 mm (139 in)
GROUND CLEARANCE	760 mm (30 in)
WEIGHT less grapple	25 445 kg (56,100 lb)

### POWER

ENGINE Tier 4f	Tigercat FPT N67 Tier 4f
▶ RATED	151 kW (203 hp) @ 2,200 rpm
▶ PEAK	165 kW (221 hp) @ 1,900 rpm
ENGINE Tier 2	Tigercat FPT N67 Tier 2
▶ RATED	159 kW (213 hp) @ 2,100 rpm
▶ PEAK	165 kW (221 hp) @ 1,900 rpm
COOLING	Side-by-side aluminum radiator, oil cooler, charge air cooler and A/C condenser
FAN	Fixed pitch, high flow
FUEL CAPACITY	455 L (120 US gal)
DEF CAPACITY	43 L (11 US gal)

### HYDRAULIC SYSTEM

PUMP, MAIN	Piston
PUMP, SWING	Piston, pressure compensated
RESERVOIR	200 L (55 US gal)
FILTRATION	(4) Spin-on, 7 micron full-flow
CYLINDER, HOIST	178 mm (7 in) diameter
CYLINDER, STICK	152 mm (6 in) diameter
CYLINDERS, STABILIZER	N/A

### ROTATING UPPER

SWING DRIVE	8 rpm variable, 360° continuous rotation; Swing priority and energy recovery
SWING BEARING	1 190 mm (47 in) ball circle diameter; Internal gear teeth; Double reduction planetary gearbox
ENCLOSURE	Walk-up platform
COUNTERWEIGHT	2 950 kg (6,500 lb)
▶ Optional	3 630 kg (8,000 lb); 4 535 kg (10,000 lb)

### UNDERCARRIAGE

TRACK FRAMES	F6-140 heavy duty forestry; Integral track guides
TRACK CHAIN	F8/D6D 203 mm (8 in) pitch sealed and greased
FINAL DRIVE	(2) Axial piston motors; Infinitely variable speed
TRACTIVE EFFORT	222 kN (50,000 lbf)
GEARBOX	Triple reduction planetary type with brake
FRONT IDLER	Hydraulic track adjuster; Spring shock absorber
ROLLERS, UPPER	(2) D6D excavator type
▶ Optional	Bolt-on slides
ROLLERS, LOWER	(8) D6 single and double flange tractor type
TRACK SHOE	760 mm (30 in) triple grouser
▶ Optional	915 mm (36 in) triple grouser; 915 mm (36 in) triple grouser tri-track

### BRAKES

TRACK	Friction disc; Automatic spring applied, hydraulic release
SWING	Friction disc; Manual spring applied, hydraulic release

### BOOM

MAXIMUM REACH	9 750 mm (32 ft)
LIFT CAPACITY bare pin	15 875 kg (35,000 lb) @ 3,35 m (11 ft); 6 350 kg (14,000 lb) @ 7,62 m (25 ft)

### ELECTRICAL

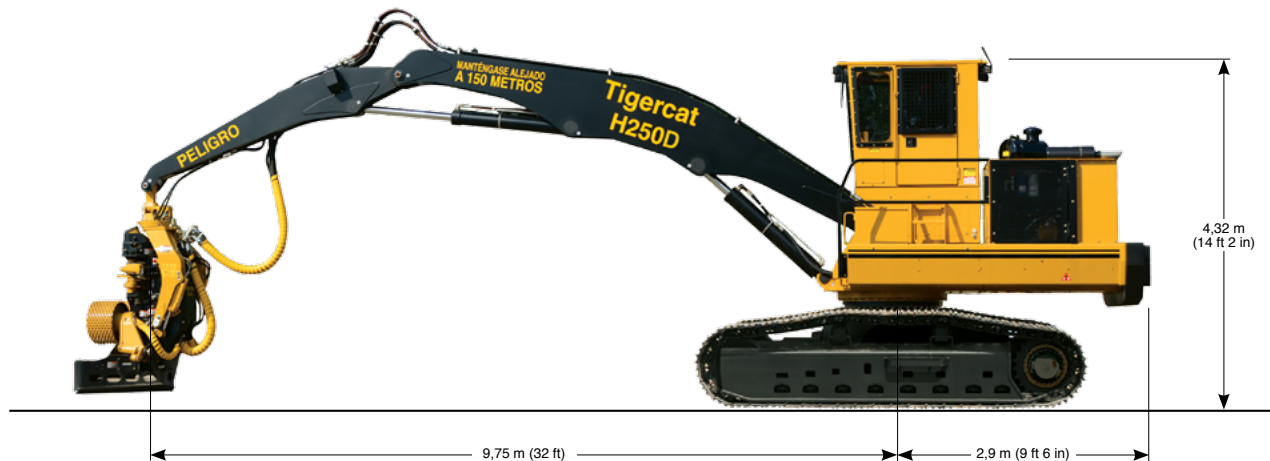
BATTERY	(2) 950 CCA, 12 v
ALTERNATOR	80 amp
SYSTEM VOLTAGE	24 v
LIGHTING	Halogen, (2) Boom mounted, (3) Cab mounted, (1) Engine house; (1) Service, engine house
▶ Optional	LED lighting package

# SPECIFICATIONS

## H250D

OPERATOR'S STATION	
CAB	Insulated, pressurized and isolation mounted; Forward sloping, tinted polycarbonate windshield with intermittent wiper Sliding tinted side windows; Polycarbonate skylight; Window blinds for windshield and skylight A/C, heater, defroster and pressurizer 3-speed fan; Dome light; Cell phone holder; (2) 12 v power points; CB radio AM/FM digital stereo with CD player and auxiliary input port; Bluetooth® audio and hands-free calling Electronic control system with colour LCD display screen for machine monitoring and function adjustment
SEAT	Heavy duty suspension, fully adjustable, heated and cooled
OPERATOR'S CONTROLS	
BOOM	Hydraulic joystick
STABILIZERS	N/A
SWING	Hydraulic joystick
TRAVEL	Foot operated pilot valve
OPTIONAL EQUIPMENT	
	F6-152 undercarriage; RemoteLog™ telematics system

## H250D PROCESSOR



ALL ENGINE POWER VALUES ARE QUOTED AT NET POWER, AS PER SAE J1349  
TIGERCAT RESERVES THE RIGHT TO AMEND THESE SPECIFICATIONS AT ANY TIME WITHOUT NOTICE

<b>EMAIL</b>	comments@tigercat.com
<b>PHONE</b>	519.753.2000
<b>WEBSITE</b>	www.tigercat.com
<b>ADDRESS</b>	54 Morton Ave. East, Brantford, Ontario Canada, N3R 7J7
<b>MAIL</b>	Box 637 N3T 5P9

© 2001 - 2017 Tigercat International Inc. All Rights Reserved. TIGERCAT, WIDERANGE, TURNAROUND, ER, EHS, LOW-WIDE and TEC, their respective logos, TOUGH RELIABLE PRODUCTIVE, TIGERCAT TV, "Tigercat Orange" and BETWEEN THE BRANCHES, as well as corporate and product identity, are trademarks of Tigercat International Inc., and may not be used without permission. TIGERCAT, TURNAROUND, WIDERANGE, EHS and ER, and their respective logos are registered trademarks of Tigercat International Inc.