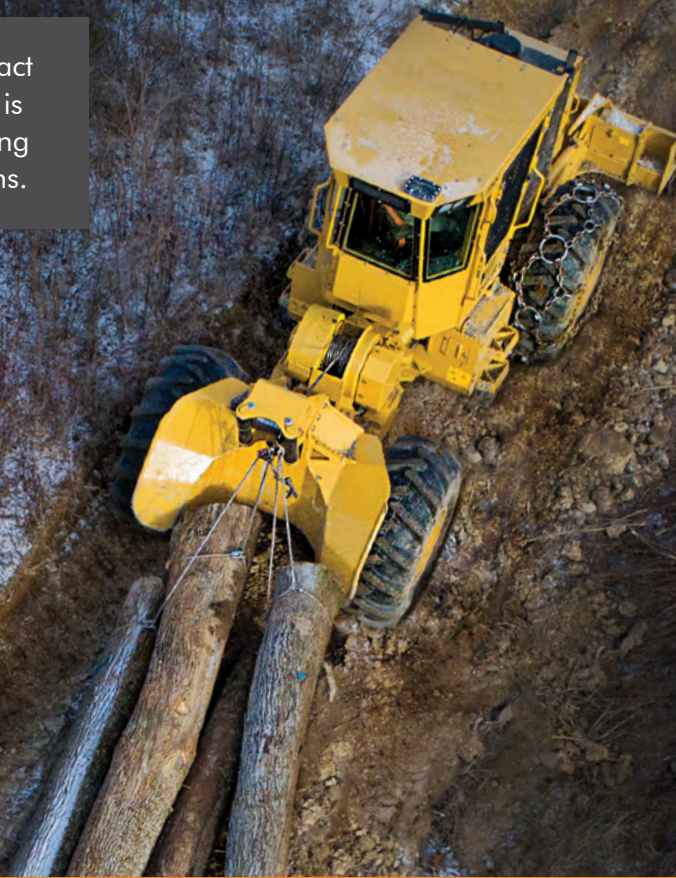


602 SKIDDER

The Tigercat 602 is a quick, compact and fuel efficient skidder. The 602 is ideal for high value selective logging and mountain skidding applications.



BENEFITS AND ADVANTAGES:

Powerful, efficient Tigercat FPT engine

- Automatic variable engine speed for high fuel efficiency
- Operator controlled maximum speed setting
- Simple, reliable SCR emission control technology

EHS 'efficient high speed' hydrostatic drive

- Extremely efficient driveline with electronic control system
- Capable of high speeds in forward and reverse
- High performance, minimal wheel spin in adverse terrain

Advanced electronic control system

- Intuitive user interface and better fuel economy
- Provides precise control of all machine functions

High capacity cooling system

- Optional variable pitch, reversing airflow fan

Durable, reliable Tigercat axles

Designed and built for extreme duty

- Strength optimized frames
- Strong, long-life centre section constructed with thick steel plate, oversized pins and tapered roller bearings

Excellent service access

- Neat, compact engine enclosure
- Easy access to daily service points
- Tilt cab for access to pumps, motors and driveline

Turnaround[®] equipped operator's station

- Two-position Turnaround seat with ergonomic joystick steering and full rear-facing drive controls
- Excellent visibility to the sides of the engine house

602

DIMENSIONS with standard tires

LENGTH	6 825 mm (269 in)
WHEELBASE	3 750 mm (148 in)
WIDTH	2 690 mm (106 in)
HEIGHT	3120 mm (123 in)
GROUND CLEARANCE	570 mm (23 in)
WEIGHT	12 870 kg (28,375 lb)

POWER

ENGINE	Tigercat FPT N45 Tier 4f
▶ RATED	125 kW (168 hp) @ 2,200 rpm
▶ PEAK	129 kW (173 hp) @ 1,900 rpm
AIR FILTRATION	Rain cap and 2-stage engine air cleaner
▶ Optional	Precleaner and 2-stage engine air cleaner
TOP SPEED	21 km/h (13 mph)
COOLING	Side-by-side aluminum radiator, oil cooler, Charge air cooler and A/C condenser
FAN	Fixed pitch, blower
▶ Optional	Flexaire® variable pitch, reversing
FUEL CAPACITY usable	190 L (50 US gal)
DEF CAPACITY Tier 4f	30 L (8 US gal)

POWER TRAIN

TRANSMISSION	EHS (efficient high speed) hydrostatic drive Single-speed mechanical Variable speed hydrostatic (2) Variable displacement motors
AXLE, FRONT	Tigercat IB15, inboard planetary, barrel differential; fixed
AXLE, REAR	Tigercat IB15, inboard planetary, barrel differential; fixed
CENTRE JOINT OSCILLATION	+/-18°
DIFFERENTIAL LOCKS	Independent front and rear

HYDRAULIC SYSTEM

PUMP, DRIVE	Piston
PUMP, MAIN	Piston for all machine functions
PUMP, MAIN 2	Gear for cooling
FILTRATION	(3) spin-on, 7 micron full-flow
CYLINDERS, STEER	(2) 85 mm (3.25 in) bore
CYLINDERS, BLADE	(2) 90 mm (3.5 in) bore
CYLINDERS, BLADE GRAB	(2) 65 mm (2.5 in) bore
RESERVOIR	90 L (24 us gal)

BRAKES

DYNAMIC BRAKING	Hydrostatic
SECONDARY BRAKE	Enclosed, oil cooled
PARK BRAKE	Caliper; spring applied/hydraulic release

TIRES

STANDARD	24.5x32,16
OPTIONAL	23.1x26,14; 28Lx26,16; 30.5Lx32,20

BLADE

WIDTH	2 030 mm (80 in)
-------	------------------

ELECTRICAL

BATTERY	(2) 12 v
ALTERNATOR	80 amp, 24 v
SYSTEM VOLTAGE	24 v

OPERATOR'S STATION

CAB	Insulated, pressurized and isolation mounted Air conditioner/heater/defroster; (2) doors with sliding side windows and hinged screens Forward sloping windshield AM/FM digital stereo CD
SEAT	Extreme duty Turnaround®, air ride; Fully adjustable height, seat back recline, lumbar support and armrests; 2-position mechanical lock, 100° rotating for rear-facing drive, heated and cooled
CONTROLS	Electronic, joystick for blade/steering Electronic, foot pedal, front and rear with forward/reverse selector switch for drive Electronic control system with colour display screen interface for machine monitoring and function adjustment

OTHER STANDARD EQUIPMENT

Alarm for reverse drive; Fire extinguisher

OPTIONAL EQUIPMENT

Hydraulic winch; LED lighting package
High output LED lighting package; Cold weather kit
CB radio; RemoteLog™ telematics system

602 SKIDDER



ALL ENGINE POWER VALUES ARE QUOTED AT NET POWER, AS PER SAE J1349. TIGERCAT RESERVES THE RIGHT TO AMEND THESE SPECIFICATIONS AT ANY TIME WITHOUT NOTICE

EMAIL	comments@tigercat.com
PHONE	519.753.2000
WEBSITE	www.tigercat.com
ADDRESS	54 Morton Ave. East, Brantford, Ontario Canada, N3R 7J7
MAIL	Box 637 N3T 5P9

© 2001 - 2017 Tigercat International Inc. All Rights Reserved. TIGERCAT, WIDERANGE, TURNAROUND, ER, EHS, LOW-WIDE and TEC, their respective logos, TOUGH RELIABLE PRODUCTIVE, TIGERCAT TV, "Tigercat Orange" and BETWEEN THE BRANCHES, as well as corporate and product identity, are trademarks of Tigercat International Inc., and may not be used without permission. TIGERCAT, TURNAROUND, WIDERANGE, EHS and ER, and their respective logos are registered trademarks of Tigercat International Inc.