

## 2160 LOADER FORWARDER



The Tigercat 2160 is a rugged, powerful loader-forwarder well suited to mill yard duties, with serious tractive effort and heavy-duty construction throughout. Powerful boom lift, 30 ton payload capacity, and quick travel speeds provide excellent productivity.

### BENEFITS AND ADVANTAGES:

Excellent stability enables the operator to load while traveling for increased production

- Tigercat's unique centre section design promotes higher stability and reduced reliance on the oscillation lock, allowing the machine to lift large loads without the use of stabilizers.

Heavy duty construction for demanding applications and large, heavy payloads

- Thick steel plate used throughout the frames
- Large pins and tapered roller bearings in oscillation and articulation joints

Excellent service access

- Valves are conveniently located under the walk-up platform
- Platform access to engine and daily service points
- Swing-out door to access hydraulic pumps and filters

Extreme duty Tigercat axles and transmission

- Tigercat bogie axles provide low ground pressure, higher capacity, and a smoother ride for the operator
- Front and rear axles are configured to track perfectly with each other at any steer angle
- Tigercat WideRange® transmission provides high tractive effort, quick working speeds, and excellent fuel efficiency

Spacious, ergonomic operator's station

- Very quiet operating environment (64 - 68 dB)
- Excellent climate control, heated/cooled seat, and window blinds
- High visibility instrumentation and engine monitoring system

Powerful and efficient engine

- Extremely quiet and fuel efficient
- Simple, reliable SCR emission control technology for Tier 4

## 2160

### DIMENSIONS with 780/50 x 28.5 tires

LENGTH	11 577 mm (455 in)
WIDTH	3 632 mm (143 in)
HEIGHT	4 877 mm (192 in)
SHIPPING HEIGHT	4 039 mm (159 in)
GROUND CLEARANCE	686 mm (27 in)
FRAME OSCILLATION	+/-9°, lockable
WEIGHT	33 112 kg (73,000 lb)
INSIDE TURN RADIUS	7 m (23 ft)
COUNTERWEIGHT	544 kg (1,200 lb)

### POWER

ENGINE	Tigercat FPT N67 Tier 4f
▶ Rated	212 kW (285 hp)
▶ Peak	216 kW (290 hp)
COOLING	Side-by-side aluminum radiator, oil cooler and charge air cooler, a/c condenser
FAN	Engine driven, automatic variable speed with automatic reversing cycle
FUEL CAPACITY usable	454 L (120 US gal)
DEF CAPACITY	43 L

### POWER TRAIN

TRANSMISSION	WideRange® drive; Variable speed hydrostatic (2) Piston
AXLE, FRONT/REAR	Tigercat ROB17 bogie; Outboard planetary Barrel differential
DIFFERENTIAL LOCKS	Independent front and rear; Friction clutch Engage while travelling
SPEED RANGE	0 - 12 km/h (0 - 7.5 mph)

### HYDRAULIC SYSTEM

PUMP, DRIVE	Piston, closed loop
PUMP, MAIN	Piston
PUMP, SWING	Piston, closed loop
PUMP, COOLING	Gear
FILTRATION	(4) Spin-on
RESERVOIR	190 L (50 US gal)
STANDARD	Hydraulic tank vacuum system Hydraulic oil electric fill pump

### BRAKES

SERVICE BRAKE	Enclosed, oil cooled
SECONDARY BRAKE	Hydrostatic
PARK BRAKE	Spring applied; Hydraulic release; Enclosed

### TIRES

FRONT/REAR	780/50 x 28.5
▶ Optional	750/55 x 26.5

### BOOM

MAXIMUM REACH bare pin	9 144 mm (360 in)
LIFT MOMENT	399 kNm (293,925 lbf-ft)
LIFT CAPACITY full reach	3 635 kg (8,000 lb)

### GRAPPLE

STANDARD	Tigercat LG4053
▶ Optional	Tigercat LG5057T

### ELECTRICAL

BATTERY	(2) 950 CCA, 12 v
ALTERNATOR	80 amp, 24 v
SYSTEM VOLTAGE	24 v
LIGHTS	(11) LED flood

### OPERATOR CONTROLS

BOOM, GRAPPLE	Hydraulic joystick (optional electric over hydraulic)
---------------	-------------------------------------------------------

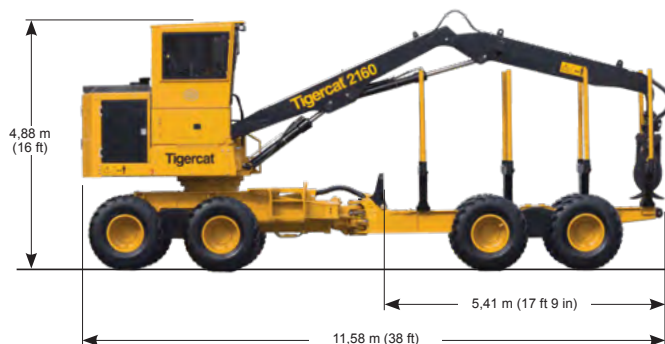
### OPERATOR'S STATION

CAB	Pressurized, insulated and isolation mounted with constant temperature A/C and heater Forward sloping, tinted polycarbonate windshield with intermittent wiper; Window blinds for windshield and skylight; Stereo radio/cd/aux with Bluetooth® and hands-free calling; 3-speed fan Dome light; Cell phone holder (2) 12 v power points; LogOn™ telematics system
SEAT	Heavy duty, fully adjustable; Heated and cooled
DISPLAY	Electronic control system with colour LCD display screen for machine monitoring and function adjustment; Camera display - (1) Camera on front of wagon frame (1) Camera on rear of upper frame

### OPTIONAL EQUIPMENT

Webasto engine/cab/hydraulic heater  
Load gate; Fire suppression system  
Pin-on heel; Electric coolant/hydraulic fluid heating package; Several bunk options; (6) High output LED lights; RemoteLog™ telematics system

## 2160 LOADER FORWARDER



ALL ENGINE POWER VALUES ARE QUOTED AT NET POWER, AS PER SAE J1349.  
TIGERCAT RESERVES THE RIGHT TO AMEND THESE SPECIFICATIONS AT ANY TIME WITHOUT NOTICE.  
WEIGHTS AND DIMENSIONS MAY VARY SUBJECT TO MACHINE OPTIONS AND CONFIGURATIONS.  
FOR THE MOST CURRENT SPECIFICATIONS PLEASE REFER TO THE TIGERCAT WEBSITE OR MOBILE APP.

EMAIL	comments@tigercat.com
PHONE	519.753.2000
WEBSITE	www.tigercat.com
ADDRESS	54 Morton Ave. East, Brantford, Ontario Canada, N3R 7J7
MAIL	Box 637 N3T 5P9

© 2001 - 2019 Tigercat International Inc. All Rights Reserved. TIGERCAT, WIDERANGE, TURNAROUND, ER, EHS, LOW-WIDE, TEC, REMOTELOG and their respective logos, TOUGH RELIABLE PRODUCTIVE, TIGERCAT TV, "Tigercat Orange" and BETWEEN THE BRANCHES, as well as corporate and product identity, are trademarks of Tigercat International Inc., and may not be used without permission. TIGERCAT, TURNAROUND, WIDERANGE, EHS, LOW-WIDE and ER, and their respective logos are registered trademarks of Tigercat International Inc.