

1165 HARVESTER

The Tigercat 1165 is a premium quality wheel harvester designed for thinning, select cut and final fell applications.



BENEFITS AND ADVANTAGES:

Powerful, efficient Tigercat FPT engine

Strong, reliable Tigercat crane

- Hooked profile promotes excellent right-side visibility
- Simple, efficient ER boom technology with no external parallel linkages
- Extreme duty slew system with 360° continuous rotation
- Choice of fixed or telescopic stick

Durable cab and crane leveling system

- Thick steel structures, large diameter cylinders and tapered roller bearings

Spacious, high visibility operator's cabin

- Large windows for clear and full line-of-sight to the wheels as well as excellent upward visibility
- High quality, climate controlled seat with four point harness

Excellent access to major components and daily service points

Oscillation balancing

- Active oscillation balancing for optimal stability when stationary and while driving
- Operate the crane and remain productive while in motion

WideRange® drive increases working travel speed while delivering powerful tractive effort

Advanced hydraulic system for efficiency and high performance

- Dedicated pumps for the drive, harvesting head, crane, fan and cooling circuit
- Closed loop drive system for excellent performance on steep slopes

Efficient, high capacity cooling system

- Pressure and flow controlled piston fan pump maintains optimal operating temperatures at the lowest fan speed

1165

DIMENSIONS with standard tires, 6WD

LENGTH less boom	8 220 mm (323 in)
WIDTH	2 940 mm (116 in)
HEIGHT	4 055 mm (160 in)
SHIPPING HEIGHT	3 810 (151 in)
GROUND CLEARANCE	655 mm (26 in)
WHEELBASE	4 520 mm (178 in)
FRAME ARTICULATION	+/-44°
FRAME OSCILLATION	+/-18, proportional balance, lockable
MIN WEIGHT less attachment	22 910 kg (50,500 lb)

POWER

ENGINE Tier 4f	Tigercat FPT N67 Tier 4f 210 kW (282 hp) @ 2,000 rpm 1160 Nm (855 ft-lb) @ 1,500 rpm
ENGINE Tier 2	Tigercat FPT N67 Tier 2 210 kW (282 hp) @ 2,000 rpm 1170 Nm (863 ft-lb) @ 1,700 rpm
COOLING	Side-by-side radiator, oil cooler and charge air cooler
FAN	Hydraulically driven, automatic variable speed with automatic reversing cycle
FUEL CAPACITY	454 L (120 US gal)
DEF CAPACITY Tier 4f	80 L (21 US gal)

POWER TRAIN

TRANSMISSION	WideRange® drive; Variable speed hydrostatic (2) piston motors, infinitely variable
AXLE, FRONT	14 t (15.4 tn) rated bogie
AXLE, REAR	Tigercat OB15, outboard planetary, barrel differential, fixed
► Optional	14 t (15.4 tn) rated bogie
DIFFERENTIAL LOCKS	Independent front and rear, friction clutch style
TOP SPEED	11,1 km/h (6.9 mph)

HYDRAULIC SYSTEM

PUMP, DRIVE	Piston, closed loop
PUMP, HARVESTING HEAD	Piston
PUMP, CRANE	Piston
PUMP, FAN	Piston
PUMP, CHARGE/COOLING	Gear
FILTRATION	(7) Spin-on
RESERVOIR	200 L (53 US gal)

BRAKES

SERVICE BRAKE	Hydrostatic, enclosed, oil cooled
SECONDARY BRAKE	Enclosed, oil cooled
PARK BRAKE	Spring applied, hydraulic release

TIRES

STANDARD	600/55-26.5 (front), 700/55-34 (rear)
OPTIONAL	710/45-26.5

ELECTRICAL

BATTERY	(2) 810 CCA, 12 v
ALTERNATOR	140 amp, 24 v
SYSTEM VOLTAGE	24 v
LIGHTS	(25) LED

CRANE

STANDARD	Tigercat H250ER90; ER, fixed stick
► MAXIMUM REACH bare pin	9,0 m (30 ft)
► LIFT MOMENT gross	250 kNm (191,750 lbf-ft)
► LIFT CAPACITY bare pin	1 860 kg (4,100 lb) @ 9,0 (30 ft)
OPTIONAL	Tigercat H250ER110T; ER; telescopic stick boom
► MAXIMUM REACH bare pin	11,0 m (36 ft)
► LIFT MOMENT gross	250 kNm (191, 750 lbf-ft)
► LIFT CAPACITY bare pin	1 300 kg (2,865 lb) @ 11,0 m (36 ft)
SLEW TORQUE net	56 kNm (41,300 lbf-ft)
ROTATION	360° continuous
LEVELING	18° forward; 24° rear; +/- 18° side

OPERATOR CONTROLS

CRANE/HEAD	Mini lever, electric over hydraulic
STEERING	Electric joystick

OPERATOR'S STATION

CAB	Pressurized, insulated and isolation mounted with constant temperature A/C and heater Thermal formed curved windshield, UL752 level 1 tested; Thermal insulated polycarbonate windows Window blinds; 2 exits; Computerized machine monitoring system; AM/FM digital stereo with CD player; Bluetooth® audio and hands-free calling rearVIEW camera system
SEAT	Air ride, extreme duty fully adjustable with lumbar support and armrests
CONTROLS	Electronic control for all functions (less head) Mini-joystick for steering; Electronic control system with colour LCD display screen for machine monitoring and function adjustment

OTHER STANDARD EQUIPMENT

	Vacuum pump; Electric hydraulic fill pump Electric/hydraulic hood and fuel tank tilt LogOn™ telematics system
--	---

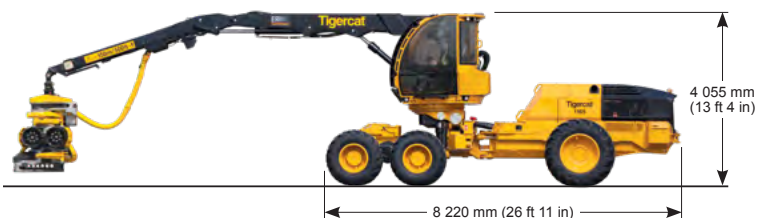
OPTIONAL EQUIPMENT

	Engine/cab/hydraulic heater; Block heater Hydraulic reservoir heater; GPS receiver; Stump spray equipment; Colour marking; Road lights RemoteLog® telematics system
--	---

HARVESTING HEAD

	Up to 1 650 kg (3,750 lb) heads for H250ER90 crane Up to 1 100 kg (2,425 lb) heads for H250ER110T crane
--	--

1165 HARVESTER



ALL ENGINE POWER VALUES ARE QUOTED AT NET POWER, AS PER SAE J1349. TIGERCAT RESERVES THE RIGHT TO AMEND THESE SPECIFICATIONS AT ANY TIME WITHOUT NOTICE. WEIGHTS AND DIMENSIONS MAY VARY SUBJECT TO MACHINE OPTIONS AND CONFIGURATIONS. FOR THE MOST CURRENT SPECIFICATIONS PLEASE REFER TO THE TIGERCAT WEBSITE OR MOBILE APP.

EMAIL	comments@tigercat.com
PHONE	519.753.2000
WEBSITE	www.tigercat.com
ADDRESS	54 Morton Ave. East, Brantford, Ontario Canada, N3R 7J7
MAIL	Box 637 N3T 5P9

© 2001 - 2020 Tigercat International Inc. All Rights Reserved. TIGERCAT, WIDERANGE, TURNAROUND, ER, EHS, LOW-WIDE, TEC, REMOTELOG, and their respective logos, TOUGH RELIABLE PRODUCTIVE, TIGERCAT TV, "Tigercat Orange" and BETWEEN THE BRANCHES, as well as corporate and product identity, are trademarks of Tigercat International Inc., and may not be used without permission. TIGERCAT, TURNAROUND, WIDERANGE, EHS, LOW-WIDE, ER and REMOTELOG, and their respective logos are registered trademarks of Tigercat International Inc.