

The 6050 carbonator is an advanced, cost-effective and environmentally friendly wood debris conversion system. Wood debris volume is reduced while sequestering carbon for carbon credits and beneficial re-use.



BENEFITS AND ADVANTAGES:

Eco-friendly method to reduce wood debris

- Reduces wood debris volume onsite
- Accepts logs, limbs, brush, stumps, yard waste, pallets, clean lumber and other clean wood-based material

High processing capacity

- High in-feed rates
- No material pre-processing required
- Manufactures a carbon based product

Cost-effective solution

- Reduces debris transportation and disposal costs
- Low operating cost with single person operation

Easy mobility within site and from site-to-site

- Simple remote control drive system
- Track mounted to effortlessly maneuver onsite
- Easily transported from site-to-site

Operator friendly with excellent service access

- Live stream video provides full visibility for feeding
- Removable grate for easy cleaning of non-combustibles
- Clear access to engine and daily service points

Organic carbon-based output

- Often referred to as biochar
- Sequesters carbon for carbon storage and beneficial re-use



Remote control functions for easy operation.



Augers and quenching system.

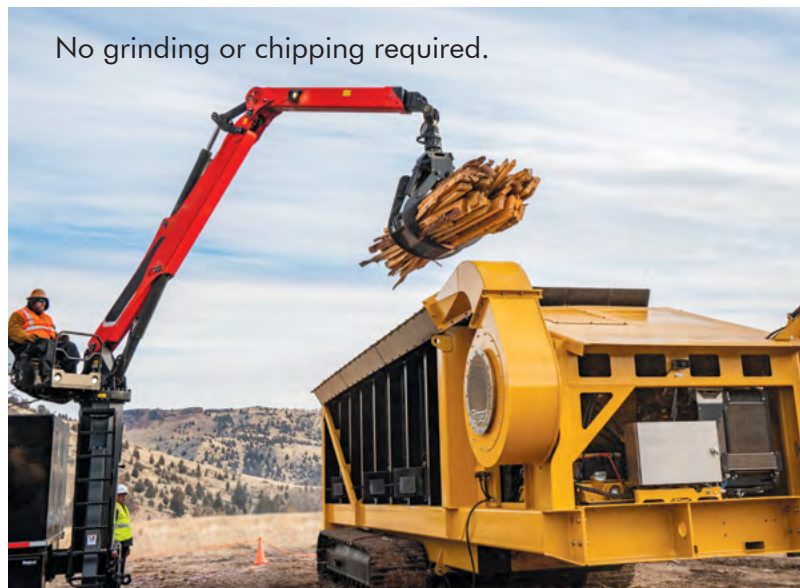
6050 CARBONATOR

COST EFFECTIVE WOOD DEBRIS REDUCTION AND CONVERSION

- High processing capacity
- Low operating cost
- Operator friendly
- Easy mobility
- Eco-friendly solution



Optional conveyor system for output collection.

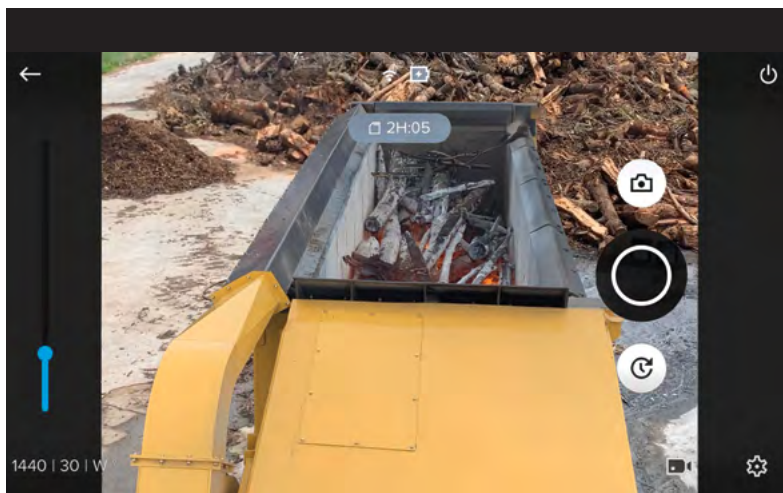


No grinding or chipping required.

- Forestry and land clearing
- Primary and secondary mill residue
- Agriculture
- Municipal vegetation
- Clean construction and demolition debris



Large feed area with adjustable camera system.



Live stream video monitoring.



Organic carbon catchment.

6050

DIMENSIONS

LENGTH	12 190 mm (480 in)
WIDTH	3 610 mm (142 in)
HEIGHT	3 660 mm (144 in)
GROUND CLEARANCE	405 mm (16 in)
WEIGHT	41 730 kg (92,000 lb)

POWER

ENGINE Tier 4f	Caterpillar® C4.4 110 kW (148 hp) @ 2,200 rpm
ENGINE Tier 2	Caterpillar® C4.4 96 kW (129 hp) @ 2,200 rpm
COOLING	Aluminum side-by-side radiator and charge air cooler, rear fuel cooler; Removable intake debris screen
FAN	Suction fan, belt driven off engine crankshaft
FUEL CAPACITY	473 L (125 US gal)
DEF capacity	38 L (10 US gal)

HYDRAULIC SYSTEM

PUMP, MAIN	Piston
PUMP, BLOWERS	Piston
RESERVOIR	290 L (77 US gal)
FILTRATION	(5) Spin-on, 7 micron full flow; (1) Water absorbing

UNDERCARRIAGE

TRACK FRAMES	5 Series, heavy-duty
FINAL DRIVE	(2) Piston motors with brake valves Two-speed
FRONT IDLER	Hydraulic track adjuster; Spring shock absorber
SLIDES, UPPER	Replaceable
ROLLERS, LOWER	(9) D5 single/double flange tractor type
TRACK SHOE	700 mm (28 in) triple grouser

CARBONIZING SYSTEM

ENCLOSURE	(20) Replaceable thermo-ceramic panels Rated to 1 650°C (3,000°F) Replaceable grates
AIR SUPPLY	(2) Hydraulic driven fans, over-air and under-air
MATERIAL EXTRACTION	(3) Water cooled augers with continuous quenching (2) Hydraulic motors with chain drive
COOLING	Externally supplied water-quenching system 11-19 L/min (3-5 US gal/min) flow rate

ELECTRICAL

BATTERY	(2) 12 v
ALTERNATOR	100 amp, 12 v
SYSTEM VOLTAGE	24 v

OPERATOR CONTROLS

Electronic control system with colour LCD display screen interface for machine monitoring and function adjustment
Radio remote control for all machine functions
Camera mounted on hydraulic arm for loading and combustion area sightline

ORGANIC CARBON HANDLING EQUIPMENT

Mobile quenching auger
Portable quenching conveyor with metal separation

6050 CARBONATOR



ALL ENGINE POWER VALUES ARE QUOTED AT NET POWER, AS PER SAE J1349.
TIGERCAT RESERVES THE RIGHT TO AMEND THESE SPECIFICATIONS AT ANY TIME WITHOUT NOTICE.
WEIGHTS AND DIMENSIONS MAY VARY SUBJECT TO MACHINE OPTIONS AND CONFIGURATIONS.

FOR THE MOST CURRENT SPECIFICATIONS PLEASE REFER TO THE TIGERCAT WEBSITE OR MOBILE APP. TIGERCAT PRODUCTS MAY BE COVERED BY ONE OR MORE OF THE FOLLOWING US OR CANADIAN PATENTS OR CORRESPONDING PATENTS IN OTHER COUNTRIES. REFER TO VIRTUAL PATENT MARKINGS: WWW.TIGERCAT.COM/PATENTS.

EMAIL	comments@tigercat.com
PHONE	519.753.2000
WEBSITE	www.tigercat.com
ADDRESS	54 Morton Ave. East, Brantford, Ontario Canada, N3R 7J7
MAIL	Box 637 N3T 5P9

© 2001 - 2022 Tigercat International Inc. All Rights Reserved. TIGERCAT, WIDERANGE, TURNAROUND, ER, EHS, LOW-WIDE, TEC, REMOTELOG, LOGON, and their respective logos, TOUGH RELIABLE PRODUCTIVE, TIGERCAT TV, "Tigercat Orange" and BETWEEN THE BRANCHES, as well as corporate and product identity, are trademarks of Tigercat International Inc., and may not be used without permission. TIGERCAT, TURNAROUND, WIDERANGE, EHS, LOW-WIDE, ER and REMOTELOG, and their respective logos are registered trademarks of Tigercat International Inc.