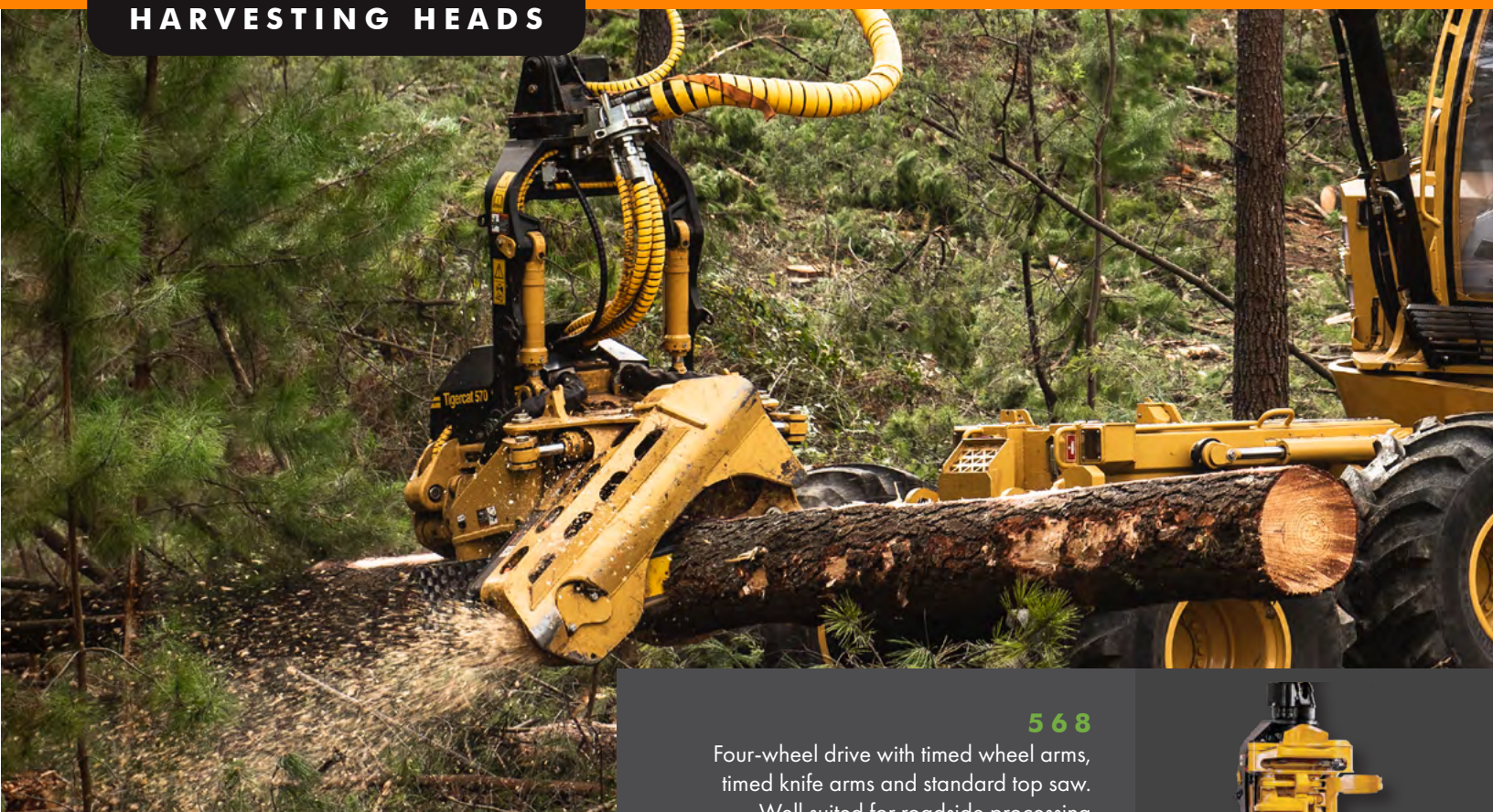


HARVESTING HEADS



568

Four-wheel drive with timed wheel arms, timed knife arms and standard top saw. Well suited for roadside processing applications.

Optimal tree size:
200-570 mm (8-22.5 in)



570

Two-wheel drive with independent wheel arms and knife arms offering simplicity and versatility. Well suited for a wide-range of at-the-stump harvesting, processing and debarking applications.

Optimal tree size:
150-560 mm (6-20 in)



575

Three-wheel drive with independent wheel arms, independent or timed knife arms and standard top saw. Well suited for tough roadside processing or at-the-stump harvesting applications.

Optimal tree size:
230-580 mm (9-23 in)



HEAVY DUTY
HARVESTING
HEADS FOR HIGH
PERFORMANCE
TIGERCAT CARRIERS.

Tigercat®

MAXIMUM
PERFORMANCE AND
EFFICIENCY WITH
NO COMPROMISE.

- **OPTIMIZED
HYDRAULIC SYSTEM**
- **RELIABLE MEASURING**
- **ROBUST DESIGN**



**STRONG, HEAVY DUTY
STRUCTURE TO MATCH HIGH
PERFORMANCE TIGERCAT
CARRIERS.**



PRECISE AND PRODUCTIVE

Exceptional speed and power with
Tigercat Autoshift™ drive
Outstanding delimbing and debarking capability
Accurate and precise diameter and
length measuring
Clean saw cuts for consistent quality
High capacity drive motors for optimal performance

DURABLE, HIGH QUALITY COMPONENTS FOR LONG LIFE

Large diameter taper-lock pins
Thick-walled, hardened steel bushings
Heavy gauge, high-flex electrical cables
Cushioned cylinders to reduce shock loads
Superior guarding to protect from damage



Well protected hose routings
that are easy to service.



EXCELLENT CUTTING PERFORMANCE.

Optional continuous rotation for conventional
and through-the-tip boom systems.



OPTIMIZED HYDRAULIC SYSTEM.

Efficient, high flow hydraulic system for improved
productivity and reduced fuel consumption.

570 FIXED FOR COMPLETE CONTROL

The Tigercat 570 harvesting head is also available with a fixed wrist for applications where positive control for felling and processing is required.

The 570 fixed head design combines two proven technologies – the Tigercat 570 harvesting head and the Tigercat 340 degree wrist.

The standard wrist-float feature allows the head to align more easily to the tree for felling and feeding, making it ideal for control felling high value timber, and trimming large limbs.

The fixed head design is best matched to Tigercat 822 series carriers.



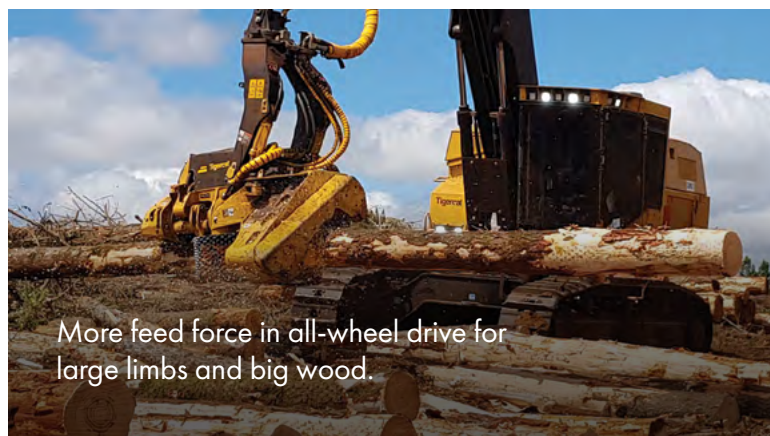
AUTOSHIFT DRIVE

With Tigercat's patented Autoshift™ drive system, you don't have to sacrifice top speed and system efficiency to get powerful feed force.

SPEED AND POWER

Maximize feed force with all-wheel drive for faster acceleration and to quickly power through bigger trees and large limbs. As the load drops, the head automatically shifts to two-wheel drive, improving efficiency and increasing feed speed. The system shifts back and forth seamlessly with no operator input required.

Available on 568 and 575 models only. Full manual independent drive control also available.





D5 CONTROL SYSTEM

Monitor your harvesting head to ensure maximum productivity with the Tigercat D5 control system.

THE D5 ADVANTAGE

- Simplified, intuitive user interface
- Customizable settings for multiple operators
- Large, colour touchscreen display
- Six species, 30 presets per species
- Multiple production reports

Three system levels to suit applications from simple priority bucking to full optimization:

- Tigercat D5 Prio
- Tigercat D5 Prio PC
- Tigercat D5 Optimization

All system levels communicate with RemoteLog®



568 HARVESTING HEAD



Scan the QR code then click 'SPECS' for a full list of machine specifications for the 568 Harvesting Head.

570 HARVESTING HEAD



Scan the QR code then click 'SPECS' for a full list of machine specifications for the 570 Harvesting Head.

575 HARVESTING HEAD



Scan the QR code then click 'SPECS' for a full list of machine specifications for the 575 Harvesting Head.

Download the Tigercat App to access the most current machine specifications for all Tigercat machine models.

EMAIL	comments@tigercat.com
PHONE	519.753.2000
WEBSITE	www.tigercat.com
ADDRESS	54 Morton Ave. East, Brantford, Ontario Canada, N3R 7J7
MAIL	Box 637 N3T 5P9

© 2001 - 2022 Tigercat International Inc. All Rights Reserved. TIGERCAT, WIDERANGE, TURNAROUND, ER, EHS, LOW-WIDE, TEC, REMOTELOG, LOGON, TCI and their respective logos, TOUGH RELIABLE PRODUCTIVE, TIGERCAT TV, "Tigercat Orange" and BETWEEN THE BRANCHES, as well as corporate and product identity, are trademarks of Tigercat International Inc., and may not be used without permission. TIGERCAT, TCI, TURNAROUND, WIDERANGE, EHS, LOW-WIDE, ER and REMOTELOG, and their respective logos are registered trademarks of Tigercat International Inc.