

# FORWARDERS

1075C | 1085C



DESIGNED FOR HIGH PRODUCTION AND LOW COST PER TONNE IN THE  
WORLD'S MOST DEMANDING FORWARDING APPLICATIONS.

**TCi**®

# THE FORWARDER LINE-UP



## 1075C

A 20-tonne capacity forwarder designed for high production jobs, around-the-clock operation and a wide variety of tough terrain conditions.



## 1085C

Stable and powerful with more tractive effort and extreme duty 25-tonne bogie axles, the 1085C is a forwarder ideally suited to high production forwarding operations in extreme terrain and steep slopes.



# THE COMMAND CENTRE

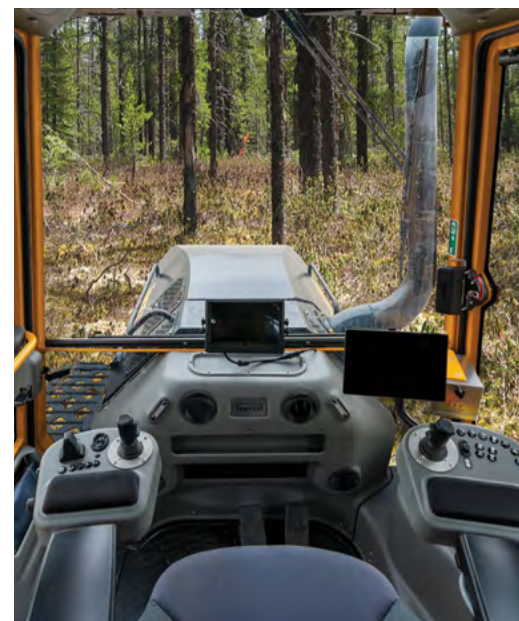


## SPACIOUS CAB

WITH GENEROUS WINDOW AREA



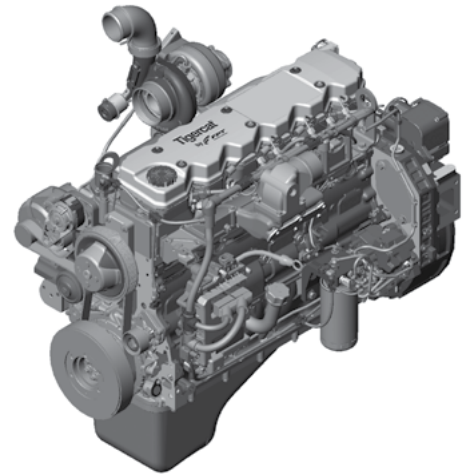
- ▶ An ergonomic operating environment with rotating seat and well laid out control pods reduce operator fatigue on long shifts.
- ▶ Large windows provide clear sightlines to the wheels, bunk, and blade.
- ▶ The seat design has an effortless, electrically locking swivel mechanism and infinite rotate positions. Generous legroom is available when rotating the seat.
- ▶ Standard equipped with a heated air-ride suspension seat.
- ▶ Low in-cab noise levels for high productivity during long shifts.
- ▶ Standard equipped with 16 LED lights for night operation.



# POWER, STRUCTURE AND STABILITY

## TIGERCAT FPT ENGINE

- ▶ FPT Industrial has delivered an exceptionally reliable and fuel efficient engine solution available globally. All Tigercat FPT engines are equipped with a second generation common rail fuel injection system, allowing them to achieve top performance in terms of load response, maximum torque and top power with minimum fuel consumption.
- ▶ Forwarders are available with Stage V, Tier 4 final, Tier 2 and Non-certified engines for compliance worldwide.



TIGERCAT**POWER.**  
TIGERCAT**SUPPORT.**

## STRUCTURAL INTEGRITY

- ▶ Designed and built for the most demanding forwarding applications. Exterior panels are factory built for forest use so no external guarding kits are needed.
- ▶ The centre section is constructed with thick steel sections, large pins and tapered roller bearings in the articulation and oscillation joints. The steer cylinders are generously sized with large pins and pin mounts to provide superior steering power.
- ▶ Unlike most competing forwarders, the oscillation joint is situated on the wagon frame. With this unique design, the weight distribution of the machine and critical design factors combine to make the rear wagon very stable, thereby increasing the overall stability of the machine when turning, operating on slopes and when loading with the crane extended.



## LEVEL- LOAD BUNK SYSTEM

- ▶ The level-load bunk system is a common configuration and ideal for double bunking loads of shorter logs. It also works very well with single loads of longer logs. The overall installation is lighter than the low-wide bunk system.

## LOW-WIDE BUNK SYSTEM

- ▶ The unique low-wide bunk system combined with the hooked crane expands the working envelope of the crane for reduced machine travel, decreased loading and unloading cycle time, and improved productivity when paired with single length log loads. The centre of mass of the load is slightly lower and the angle helps retain logs while traveling on steeper ground.
- ▶ The operator enjoys a clear sightline to the top of the load, increasing log placement accuracy and decreasing cycle times. In addition, the hooked boom helps the grapple stay within the operator's view through the entire loading cycle.



## GATES

- ▶ The gate features a unique cushioning system and is designed to be significantly stronger than competing machines.
- ▶ Gates are expandable with hinged sides that fold out to increase the load area, and fold in for transport.

## OPTIONS

### Expandable bunks

- ▶ Expandable bunks are standard on the 1075C and 1085C. The telescoping bunk arm can be set in multiple positions moving the stake in or out.

### High visibility gate

- ▶ The high visibility gate option has slats that are angled outward from the operator's point of view to improve visibility, especially when loading with a steering angle to the wagon.

### Movable gate

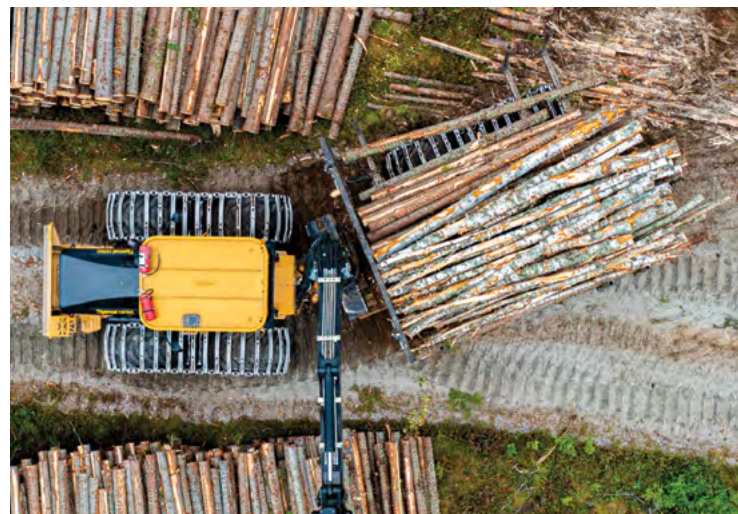
- ▶ The movable gate option allows the operator to slide the gate on the frame to handle shorter or longer logs, controlling it with a switch on the joystick pod.

### Payload scale

- ▶ Available with an optional payload scale system. The payload scale system uses two load cells per bunk and mounts using existing holes in the rear frame. Payload data is conveniently displayed in the cab including a load counter and a tare weight reset button.

\*Payload scale only available with a fixed gate and level-load bunk system

# low-wide®





## CRANE

- ▶ Built strong using high strength steel for long service life. End-of-position dampening sensors on the stick and main boom, along with a cushioned telescopic cylinder, prevent impact loads. The tapered roller bearings in the slew base are designed to last the life of the machine. Each hydraulic hose on the pillar is swivel mounted for extended hose life. All pivot pins use thick walled bushings.
- ▶ The hooked design expands the working envelope and provides optimal geometry for quick loading and unloading cycles.
- ▶ The Mesera crane is optional on the 1075C and 1085C.



## GRAPPLE

- ▶ The FG43 and FG53 grapples compliment the hooked crane with larger load area capacities at 0,43 m<sup>2</sup> (4.6 sq ft) and 0,53 m<sup>2</sup> (5.7 sq ft) respectively. The grapples are fitted with thick walled bushings for extended service life. The link has a hose routing design to better protect the hoses and the swing dampener has been specially designed for heavy duty application.
- ▶ Hultdins Supergrip™ grapples are optional on the 1075C and 1085C.

## STEEP SLOPE PACKAGE

- ▶ An exceptional solution for steep slope forwarding is available with the 1085C tilting crane option. Adding to the superior tractive effort of the 1085C, this option adds a tilting crane, stronger moving gate, rear tether frame and pressure lubed transmission bearings.



## BOGIES

### 1075C and 1085C

- ▶ Bogies on the 1075C and 1085C all have a long bogie arm or walking beam to give a smoother ride and high flotation area when equipped with tracks. These bogies do not have a balancing gear set so there are fewer mechanical losses in this high tractive effort design.
- ▶ In soft ground or snow covered terrain, the leading wheel tends to lift slightly with high tractive loads. This helps the forwarder get through soft spots with less material plowing ahead of the leading wheel. When this occurs, more tractive effort is provided to the ground by the trailing wheel on the same arm.
- ▶ The longer arm helps accommodate larger diameter tires for this size class.



## WIDERANGE TRANSMISSION

**Speed and tractive effort. Have it all with WideRANGE, the infinitiely variable**

- ▶ No need to choose between high or low range.
- ▶ Full speed range and full tractive effort available to the machine all the time.
- ▶ Easy and economical to maintain, extremely reliable and field proven over millions of hours.
- ▶ Designed and manufactured by Tigercat Industries.

**widerANGE®**



## EASY SERVICE ACCESS

- ▶ Excellent component layout and easy access to service points makes for quick and painless daily maintenance routines.
- ▶ A reliable spring assist system provides easy access to this area for daily maintenance.
- ▶ The strong steel tilting engine hood protects the engine and cooling system components.



**Telematics based information systems streamline operations management and provide a foundation for sound decision making. Tigercat Industries' information technology solutions are constantly evolving and improving. Information systems can help you to better manage your operations, empower your team members to problem solve, and open clear channels of communication between the logging operations, the back office, and your TCi dealer.**



## REMOTELOG

RemoteLog provides a real-time satellite based connection to the machine, crew, or multiple crews. View timeline and production data per machine. Monitor machine health and receive critical diagnostic messages. Keep the lines of communication open even in remote area with optional satellite text messaging. Data can provide complete off site fleet management.



## LOGON

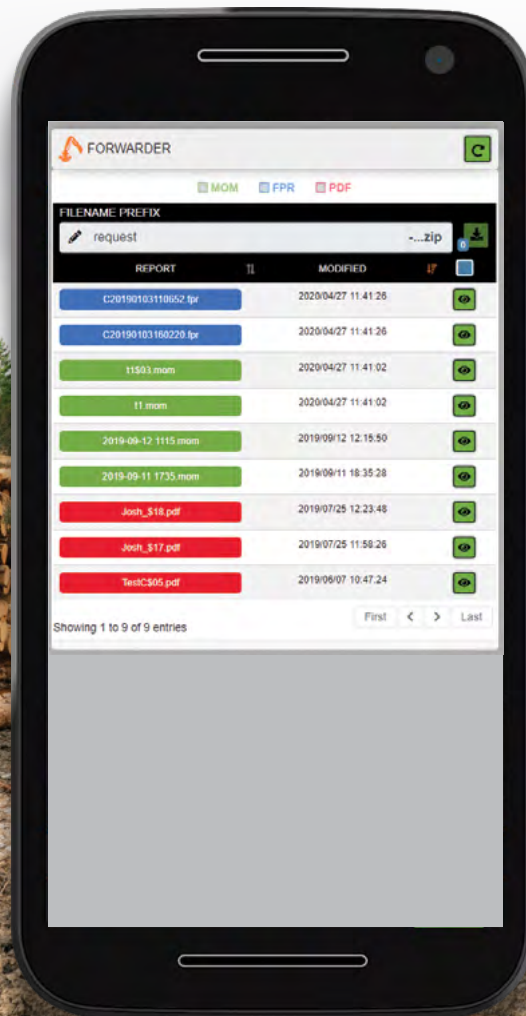
Onsite access to production and service information including operator manuals. Using a mobile device and a secure machine only WiFi hotspot, users can easily access and transfer detailed machine data including production and machine health information. Advanced diagnostic tools put the power in your hands to look up fault codes and take action to diagnose and repair.



The F30 production monitoring system manages the workflow of the forwarder operator while maximizing performance and productivity. F30 functionality includes contract management, productivity monitoring and reporting, along with GeoInfo mapping capabilities.

- ▶ Generate detailed productivity monitoring reports.
- ▶ Large touchscreen display.
- ▶ Connectivity with the machine computer control system.
- ▶ Available map view to track harvester progress, and location of harvested wood
- ▶ Customizable to operator preference.
- ▶ StanForD 2010 and StanForD Classic system compliance.
- ▶ Easily upload harvester production files with a USB device or through the LogOn app.
- ▶ The optional payload scale system sends load information in real time.

# F30



# VIRTUAL OPERATOR TRAINING

**Keep your fleet of machine producing at full capacity while you train new operators virtually. The Tigercat Industries' forestry equipment simulator provides a virtual operator training solution with an ultra-realistic operating environment.**

- ▶ Real in-cab components including seat, armrest mounted controls, machine control systems and touchscreen interfaces.
- ▶ Immersive operating environment with optional night-time operation, and various terrain and weather conditions
- ▶ A safe and controlled learning environment.
- ▶ Comprehensive training programs cover all standard harvesting and extraction operations.
- ▶ Performance metrics and reporting tools to easily evaluate operator trained progress and competence.
- ▶ Reduces training seat time in a real machine, saving time and money.



**1075C FORWARDER**

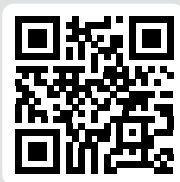
20 TONNE



Scan the QR code then click 'SPECS' for a full list of machine specifications for the 1075C forwarder.

**1085C FORWARDER**

25 TONNE



Scan the QR code then click 'SPECS' for a full list of machine specifications for the 1085C forwarder.

**Download the Tigercat-TCi App or visit [tigercat.com](http://tigercat.com) to access the most current machine specifications for all Tigercat and TCi machine models.**

<b>EMAIL</b>	comments@tigercat.com
<b>PHONE</b>	519.753.2000
<b>WEBSITE</b>	www.tigercat.com
<b>ADDRESS</b>	54 Morton Ave. East, Brantford, Ontario Canada, N3R 7J7
<b>MAIL</b>	Box 637 N3T 5P9