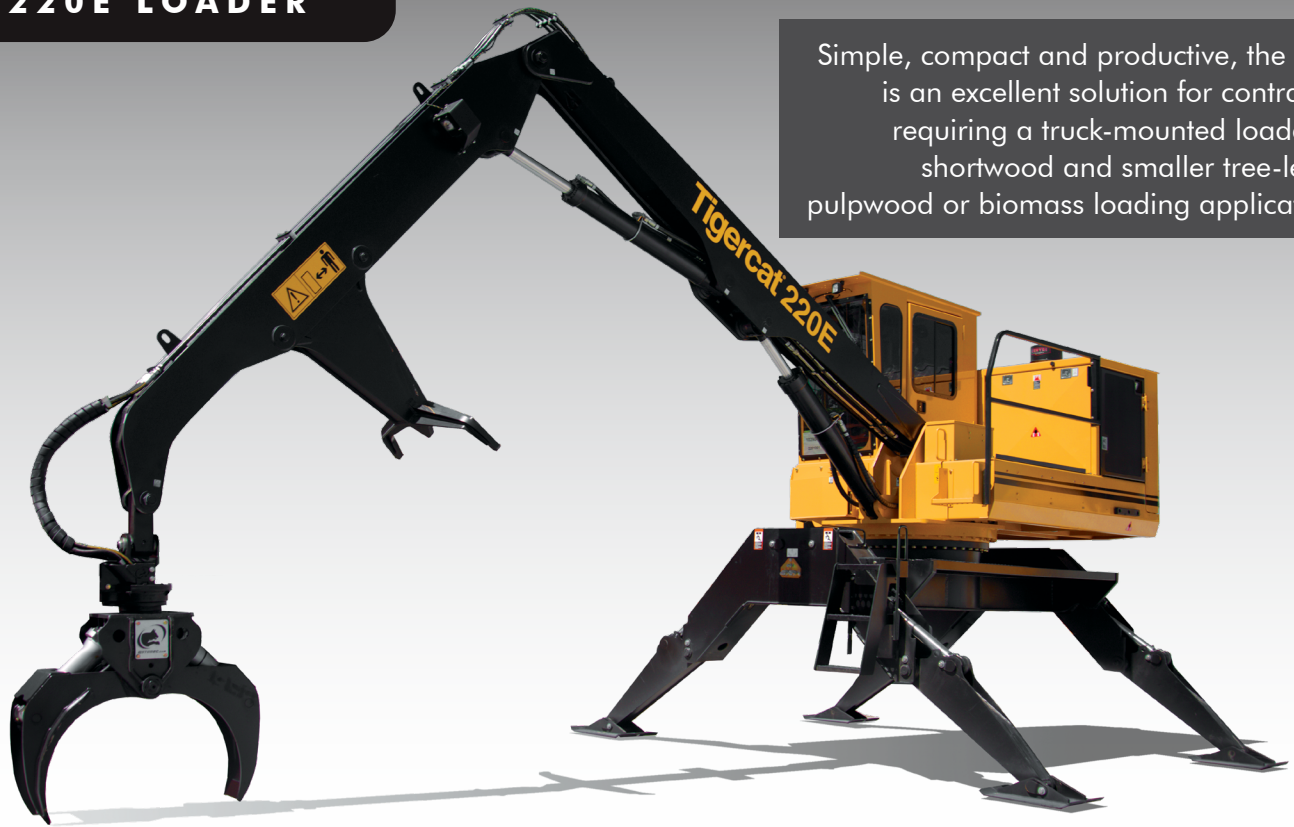


220E LOADER

Simple, compact and productive, the 220E is an excellent solution for contractors requiring a truck-mounted loader for shortwood and smaller tree-length pulpwood or biomass loading applications.



BENEFITS AND ADVANTAGES:

Simple open centre hydraulic system

Quick and responsive

- Specially designed for high cycle shortwood loading

Strength-to-weight optimized boom system

- Robust, well-protected cylinders and large diameter pins

High capacity swing system

- Large diameter bearing; high torque starts and smooth stops

High capacity cooling system

- Generously sized components suited to tropical climates

Excellent service access

- All valves are located under the walk-up platform
- Easy platform access to engine service points
- Swing-out door to access hydraulic pumps and filters

Spacious, well finished operator's station

- Very quiet operating environment with excellent climate control and tinted windows
- High visibility instrumentation and engine monitoring system

Rigid subframe for truck or trailer mount

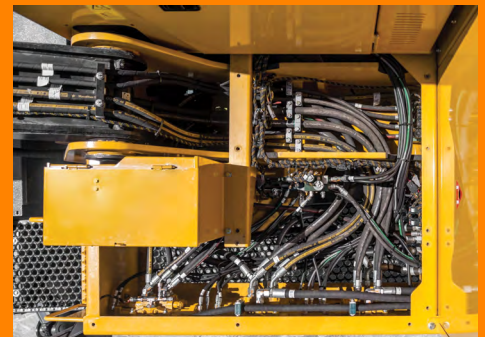
- Generously sized for excellent stability



Large diameter swing bearing.



Swing-out door to access hydraulic pumps and filters.



Clear valve access under deck plate cover.

220E

DIMENSIONS

LENGTH less boom and steps	4 470 mm (176 in)
HEIGHT transport	3 555 mm (140 in)
WIDTH transport	2 565 mm (101 in)
WEIGHT less attachment	11 795 kg (26,000 lb)

POWER

ENGINE Non-certified	Tigercat FPT N67
▶ RATED	125 kW (168 hp) @ 2,100 rpm
COOLING	Aluminum side by side radiator, oil cooler, charge air cooler and A/C condenser
FAN	Fixed pitch high flow
▶ Optional	Flexxaire® variable pitch, reversing
FUEL CAPACITY usable	378 L (100 US gal)

HYDRAULIC SYSTEM

PUMP, MAIN	Gear, triple section
RESERVOIR	190 L (50 US gal)
FILTRATION	(3) Spin-on, 7 micron full-flow
CYLINDER, HOIST	178 mm (7 in) diameter
CYLINDER, STICK	140 mm (5.5 in) diameter
CYLINDERS, STABILIZER	(4) 165 mm (6.5 in) diameter, bolt-on bi-directional lock valves

SWING SYSTEM

SWING DRIVE	8 rpm variable, 360° continuous rotation
SWING BEARING	1 190 mm (47 in) ball circle diameter Internal gear teeth Double reduction planetary gearbox

SUBFRAME - OFFSET

LENGTH less step	3 890 mm (153 in)
SUPPORT BASE	3 580 mm x 4 550 mm (141 in x 179 in)
STABILIZER PADS	510 mm x 710 mm (20 in x 28 in)
END FRAMES	Fabricated from steel plate
TRUCK MOUNT OFFSET	330 mm (13 in)

BOOM

MAXIMUM REACH	8 430 mm (27 ft 8 in)
BARE PIN LIFT at 7,62 m (25 ft)	4 265 kg (9,400 lb)

ELECTRICAL

BATTERY	(2) 950 CCA, 12 v
ALTERNATOR	75 amp, 24 v
SYSTEM VOLTAGE	24 v
LIGHTING	Halogen, (2) Boom mounted, (3) Cab mounted (1) Engine house, (1) Service, engine house
▶ Optional	LED lighting package

OPERATOR'S STATION

CAB	Insulated, pressurized and isolation mounted Forward sloping, tinted polycarbonate windshield with intermittent wiper; Sliding tinted side windows Polycarbonate skylight; Window blinds for windshield and skylight; A/C, heater, defroster and pressurizer 3-speed fan; Dome light; Cell phone holder; (2) 12 v power points; CB radio; AM/FM digital stereo and auxiliary input port Bluetooth® audio and hands-free calling; Electronic control system with colour LCD display screen for machine monitoring and function adjustment
SEAT	Heavy duty suspension, fully adjustable, heated and cooled

OPERATOR CONTROLS

BOOM	Hydraulic joystick
SWING	Foot operated pilot valve
STABILIZERS	Electric switches

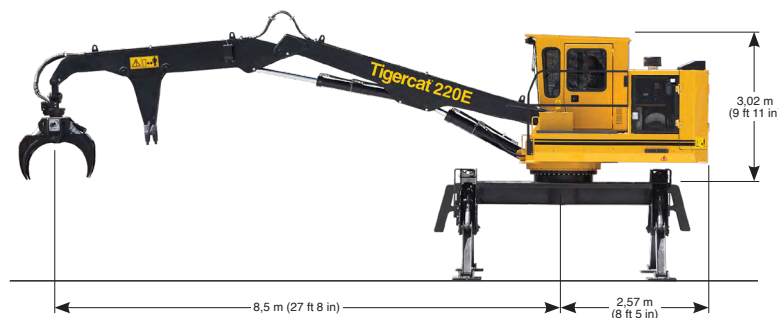
OTHER EQUIPMENT

STANDARD	LogOn™ local wifi machine monitoring system
----------	---

OPTIONAL EQUIPMENT

RemoteLog® telematics system; Various grapple options; 9,14 m (30 ft) boom; LED lighting package; 110 amp alternator; Swing brake
Hydraulic tank vacuum system; Side window guard
Counterweight

220E LOADER



ALL ENGINE POWER VALUES ARE QUOTED AT NET POWER, AS PER SAE J1349.

TIGERCAT RESERVES THE RIGHT TO AMEND THESE SPECIFICATIONS AT ANY TIME WITHOUT NOTICE.

WEIGHTS AND DIMENSIONS MAY VARY SUBJECT TO MACHINE OPTIONS AND CONFIGURATIONS.

FOR THE MOST CURRENT SPECIFICATIONS PLEASE REFER TO THE TIGERCAT WEBSITE OR MOBILE APP. TIGERCAT PRODUCTS MAY BE COVERED BY ONE OR MORE OF THE FOLLOWING US OR CANADIAN PATENTS OR CORRESPONDING PATENTS IN OTHER COUNTRIES. REFER TO VIRTUAL PATENT MARKINGS: WWW.TIGERCAT.COM/PATENTS.

EMAIL	comments@tigercat.com
PHONE	519.753.2000
WEBSITE	www.tigercat.com
ADDRESS	54 Morton Ave. East, Brantford, Ontario Canada, N3R 7J7
MAIL	Box 637 N3T 5P9

© 2001 - 2021 Tigercat International Inc. All Rights Reserved. TIGERCAT, WIDERANGE, TURNAROUND, ER, EHS, LOW-WIDE, TEC, REMOTELOG, LOGON, and their respective logos, TOUGH RELIABLE PRODUCTIVE, TIGERCAT TV, "Tigercat Orange" and BETWEEN THE BRANCHES, as well as corporate and product identity, are trademarks of Tigercat International Inc., and may not be used without permission. TIGERCAT, TURNAROUND, WIDERANGE, EHS, LOW-WIDE, ER and REMOTELOG, and their respective logos are registered trademarks of Tigercat International Inc.