

HARVESTING HEADS

534 | 544 | 568 | 570 | 573 | 575



PRODUCTIVE HARVESTING HEADS SUITED TO A VARIETY OF PROCESSING AND
CUT-TO-LENGTH HARVESTING APPLICATIONS.

TCi®

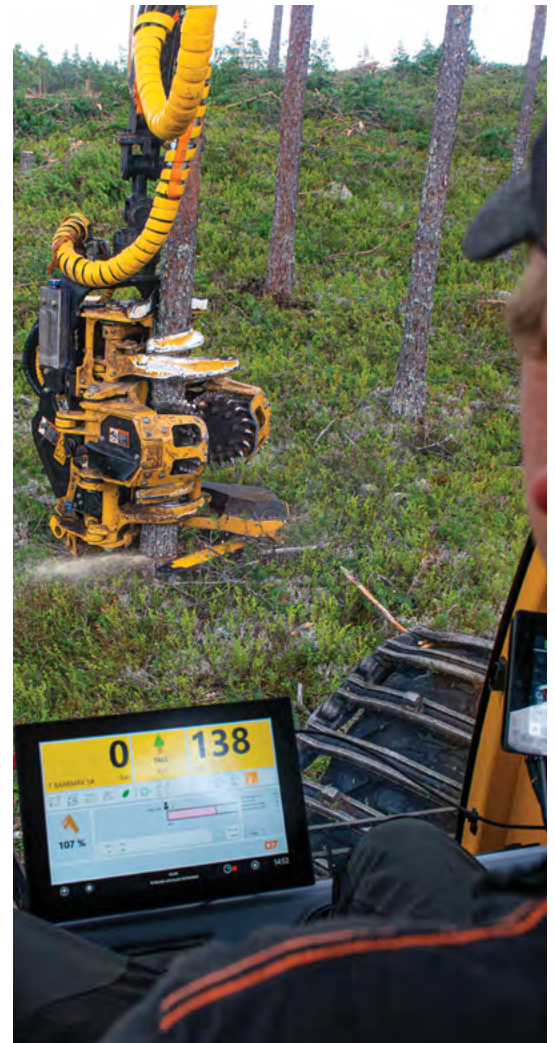
534

A HIGH PERFORMANCE THREE-WHEEL DRIVE HEAD FOR WHEEL HARVESTERS.

The 534 is a three-wheel drive harvesting head with a triangulated wheel arm design. Four knife arms, along with fixed front and back knives provide excellent delimbing quality. Well suited to mixed diameter in-stand harvesting, the 534 is designed to match the high performance characteristics of the 1165 harvester.

Key benefits:

- ▶ Quick picking. Triangulated wheel arms and optional timed knife arms
- ▶ Precise diameter and length measuring
- ▶ Robust design, high quality components for high duty cycles and long life
- ▶ Optional top saw is available



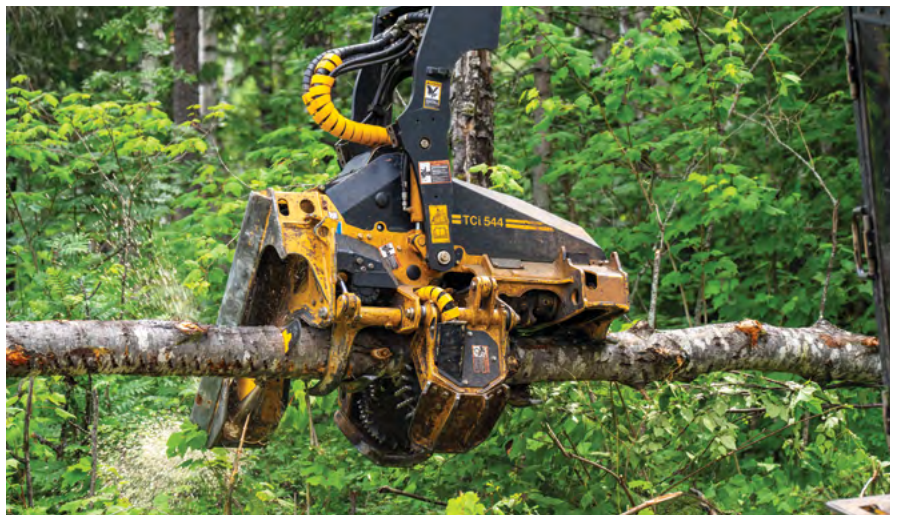
544

A DURABLE YET LIGHTWEIGHT THREE-WHEEL DRIVE HEAD FOR TRACK HARVESTERS.

The 544 is a three-wheel drive harvesting head with a triangulated wheel arm design. Four knife arms, along with fixed front and back knives provide excellent delimbing quality. The lightweight and compact design offers dexterity in mixed tree applications and is well suited for longer-reach and telescopic booms.

Key benefits:

- ▶ Diameter measuring on wheel arms and knife arms for superior accuracy
- ▶ Measuring wheel with hydraulically actuated horizontally pivoting trailing-arm for superior length accuracy
- ▶ Conventional rotator or optional 360 degree continuous rotate with through-tip hose routing
- ▶ Quick picking. Triangulated wheel arms and optional timed knife arms
- ▶ Robust design, high quality components for high duty cycles and long life
- ▶ Optional top saw is available



568

A ROBUST, PRODUCTIVE FOUR-WHEEL DRIVE HARVESTING HEAD.

Four-wheel drive with timed wheel arms and knife arms, the 568 harvesting head is well suited to roadside processing applications. With triangulated wheel arms, the 568 can quickly pick from the pile and maintain positive tree contact and control when processing.

Key benefits:

- ▶ Unique Autoshift™ drive for increased performance and efficiency
- ▶ Quick picking. Triangulated wheel arms and timed knife arms. Choice of harvesting or dual-purpose front knives
- ▶ Precise diameter and length measuring
- ▶ Robust design, high quality components for high duty cycles and long life
- ▶ Top saw is standard equipped
- ▶ Continuous rotation is standard, through-tip hose routing is available



570

A DURABLE, HIGH PERFORMANCE TWO-WHEEL DRIVE, THREE KNIFE ARM HARVESTING HEAD.

With independent knife arms and wheel arms, the 570 excels in mixed tree applications and poor stem form. High performance hydraulics with strong and simple construction for reduced downtime and lower long term operating costs.

Key benefits:

- ▶ Outstanding delimbing and debarking capability
- ▶ Precise diameter and length measuring
- ▶ Clean saw cuts for consistent quality
- ▶ Robust design, high quality components for high duty cycles and long life
- ▶ Optional top saw is available
- ▶ Continuous rotation is standard, conventional or through-tip hose routing is available



Optional Fixed Wrist

The 570 is available with an optional fixed 340 degree rotating wrist. Wrist float allows the head to easily align to the tree for felling and more easily follow the tree during feeding. The operator can override for positive wrist control to position or manipulate the tree as required for control felling and large limb trimming.



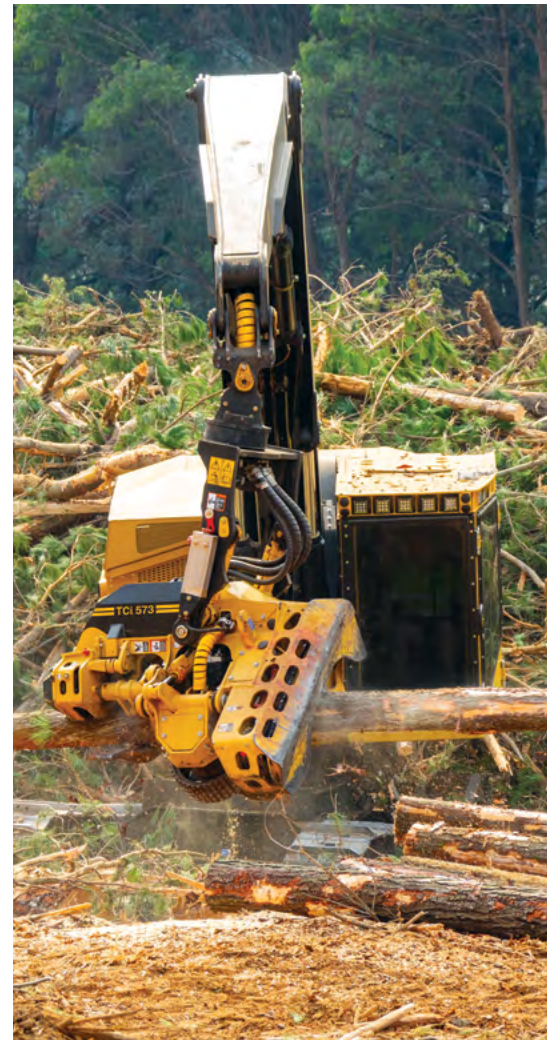
573

TRIANGULATED THREE-WHEEL DESIGN FOR HARVESTING AND PROCESSING IN MEDIUM TO LARGER SIZED TREE PROFILES.

The 573 is a robust harvesting head for track carriers. With triangulated feed wheel arms, a 3WD anti-slip feed system, and optional back knife arm, it is well suited to high production roadside processing and in-stand harvesting applications.

Key benefits:

- ▶ Precise diameter and length measuring
- ▶ Quick picking. Triangulated wheel arms and timed knife arms. Choice of harvesting or dual-purpose front knives
- ▶ Versatile and configurable for both harvesting and processing functions
- ▶ Excellent performance in medium to larger sized timber
- ▶ Top saw is standard equipped
- ▶ Continuous rotation is standard, through-tip hose routing is available



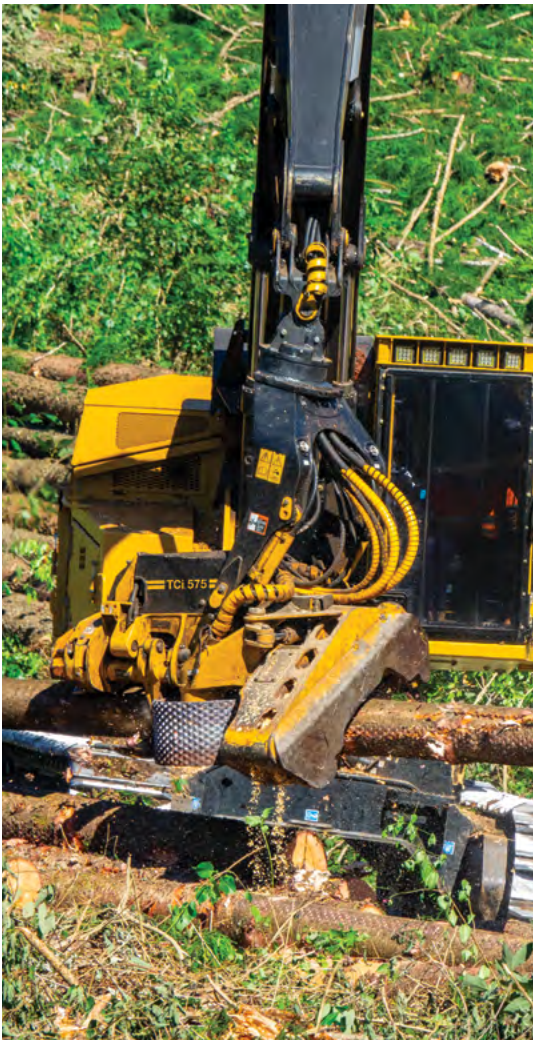
575

A HEAVY DUTY THREE-WHEEL DRIVE HARVESTING HEAD FOR LARGE LIMBS AND DIFFICULT STEM PROFILES.

An extremely durable all-around harvesting head, the 575 is well suited to in-stand harvesting, roadside processing, multi-stem pulpwood processing and eucalyptus debarking.

Key benefits:

- ▶ Unique Autoshift™ drive for increased performance and efficiency
- ▶ Independent wheel arms. High performance and efficiency
- ▶ Precise diameter and length measuring
- ▶ Robust design, high quality components for high duty cycles and long life
- ▶ Top saw is standard equipped
- ▶ Continuous rotation is standard, conventional or through-tip hose routing is available



THE TCi D7 CONTROL SYSTEM



Monitor your harvesting head to ensure maximum productivity with the TCi D7 control system.

THE D7 ADVANTAGE

- ▶ Simplified, intuitive user interface
- ▶ Customizable settings for multiple operators
- ▶ Large, colour touchscreen display
- ▶ Multiple production reports

Two system levels for priority bucking or full optimization:

- ▶ TCi D7 Priority
- ▶ TCi D7 Optimization

The TCi D7 control system pairs field-proven hardware and bucking control with head control and a user interface developed by Tigercat Industries for simple, intuitive operation.



The user friendly interface allows the operator to see all critical operating data in real time. The system is highly configurable and can be customized to each operator's preferences. Day and night display modes are standard on all systems and easily selected from the main operating screen.

HARVESTING HEADS

534



WEIGHT: 1 380 kg (3,040 lb)
OPTIMAL RANGE: 150-500 mm (6-20 in)
FEED WHEEL OPENING: 780 mm (31 in)



Scan the QR code then click 'SPECS' for a full list of machine specifications for the 534 Harvesting Head.

544



WEIGHT: 1 700 kg (3,750 lb)
OPTIMAL RANGE: 150-500 mm (6-20 in)
FEED WHEEL OPENING: 780 mm (31 in)



Scan the QR code then click 'SPECS' for a full list of machine specifications for the 544 Harvesting Head.

HARVESTING HEADS

568



WEIGHT: 2,600 kg (5,850 lb)
OPTIMAL RANGE: 150-550 mm (6-22 in)
FEED WHEEL OPENING: 820 mm (32 in)



Scan the QR code then click 'SPECS' for a full list of machine specifications for the 568 Harvesting Head.

570



WEIGHT: 2 250 kg (4,940 lb)
OPTIMAL RANGE: 120-500 mm (5-20 in)
FEED WHEEL OPENING: 725 mm (28.5 in)



Scan the QR code then click 'SPECS' for a full list of machine specifications for the 570 Harvesting Head.

573



WEIGHT: 2 775 kg (6,120 lb)
OPTIMAL RANGE: 400-600 mm (16-24 in)
FEED WHEEL OPENING: 875 mm (34.5 in)



Scan the QR code then click 'SPECS' for a full list of machine specifications for the 573 Harvesting Head.

575



WEIGHT: 2 790 kg (6,140 lb)
OPTIMAL RANGE: 150-600 mm (6-24 in)
FEED WHEEL OPENING: 725 mm (28.5 in)



Scan the QR code then click 'SPECS' for a full list of machine specifications for the 575 Harvesting Head.

Download the Tigercat-TCi App or visit tigercat.com to access the most current machine specifications for all Tigercat and TCi machine models.

AN END-TO-END SOLUTION

Heavy duty TCi harvesting heads designed and built to match the durability and performance of Tigercat and TCi carriers. Hydraulics are optimized to match the power of Tigercat and TCi purpose-built carriers. All harvesting heads are built with high quality steel and heavy duty components to withstand the harshest forestry environments.

H A R V E S T I N G H E A D S

C A R R I E R S		534	544	568	570	573	575
	H822E		●	●	●	●	●
	LH822E		●	●	●	●	●
	H855E			●	●	●	●
	LH855E			●	●	●	●
	LH857		●	●	●	●	●
	875E					●	
	850			●	●	●	●
	H250D			●	●		●
	1165	●					
	20-24 tonne forestry excavator*		●				
	25-34 tonne forestry excavator*					●	

* 544 and 573 harvesting heads can be sold separately for specified forestry excavators.

Forestry spec according to local regulations. Contact Tigercat Industries for specific carrier installation details and requirements.

EMAIL	comments@tigercat.com
PHONE	519.753.2000
WEBSITE	www.tigercat.com
ADDRESS	54 Morton Ave. East, Brantford, Ontario Canada, N3R 7J7
MAIL	Box 637 N3T 5P9

© 2001 - 2024 Tigercat International Inc. All Rights Reserved. TIGERCAT, WIDERANGE, TURNAROUND, ER, EHS, LOW-WIDE, TEC, REMOTELOG, and their respective logos, TOUGH RELIABLE PRODUCTIVE, TIGERCAT TV, "Tigercat Orange" and BETWEEN THE BRANCHES, as well as corporate and product identity, are trademarks of Tigercat International Inc., and may not be used without permission. TIGERCAT, TURNAROUND, WIDERANGE, EHS, LOW-WIDE, ER and REMOTELOG, and their respective logos are registered trademarks of Tigercat International Inc.