

612

DUAL WINCH SKIDDER



SPECIALLY DESIGNED TO EXTRACT OVERSIZED, HIGH VALUE LOGS
IN STEEP OR SENSITIVE TERRAIN CONDITIONS

Tigercat[®]
Tough • Reliable • Productive

FEATURES

612 DUAL WINCH SKIDDER

The Tigercat 612 dual winch skidder is specially designed to extract oversized, high value logs in steep or sensitive terrain conditions, while maintaining the value and quality of the residual stand.



POWERFUL AND PRODUCTIVE

- ▶ Load-sensing hydraulic system with large, efficient valves
- ▶ Full tractive effort at any engine speed
- ▶ Minimal wheel spin in adverse terrain

POWERFUL, EFFICIENT TIGERCAT FPT STAGE V ENGINE

- ▶ 6-cylinder engine for ample power and torque
- ▶ Automatic variable engine speed for high fuel efficiency





DUAL WINCH, MOVABLE SHIELD, INDEPENDENT FAIRLEADS, AND DOZER TONGS

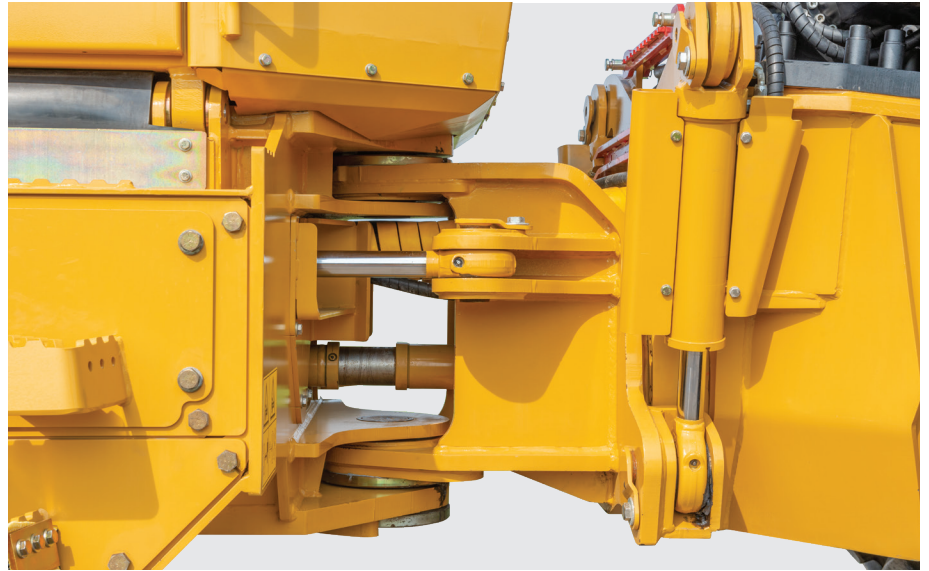
- ▶ Dual winch allows operator independent control over two separate loads
- ▶ Moveable shield anchors while winching, high ground clearance when driving
- ▶ Independent fairleads provide control over cable angle on steep slopes
- ▶ High lift front blade with front grapples for decking





STRESS-FREE SERVICEABILITY

- ▶ Convenient access to daily service points
- ▶ Thoughtful layout with easy access to all major components
- ▶ Excellent, clean routing for hoses and wiring
- ▶ Improved filter layout with all filters centrally located on one side
- ▶ Easier cab tilting with tilt pump readily accessible on right-hand side step
- ▶ Quick access to batteries, drain hose and fill hose on left-hand side step



STABLE, NIMBLE, AND ROBUST

- ▶ Excellent stability on uneven terrain
- ▶ Narrow width with oscillating centre section
- ▶ Solid centre joint construction

LARGE WORKING ENVELOPE

- ▶ Long reach, 200 degree rotating crane increases working envelope
- ▶ Large grapple offers maximum productivity



Tigercat®



OPERATORS STATION



Spacious, comfortable cab

- ▶ Spacious cab, generous window area and clear sightlines
- ▶ Numerous air vents with infinitely variable fan speed
- ▶ Easy-clean interior finish with an ergonomic control layout
- ▶ Climate controlled cup holder and dedicated storage locations

Turnaround® 220° heavy duty air ride seat

- ▶ Smooth 220° seat rotation with Tigercat designed seat rotator
- ▶ Pushbutton to lock seat in any position within the range with full machine functions and drive controls
- ▶ Ergonomic, fully adjustable, heavy duty air ride seat
- ▶ Ability to easily exit either side of the cab



SPECIFICATIONS

Tigercat®

612

DIMENSIONS with standard tires

LENGTH	8 470 mm (27 ft 9 in)
WHEELBASE	4 225 mm (13 ft 10 in)
WIDTH	2 850 mm (9 ft 4 in)
HEIGHT	3 200 mm (10 ft 6 in)
GROUND CLEARANCE	540 mm (21 in)
WEIGHT	18 750 kg (41 340 lb)

POWER

ENGINE	Tigercat FPT N67 Stage V
▶ RATED	155 kW (208 hp) @ 2,200 rpm
AIR FILTRATION	2-stage engine air cleaner with heavy duty rain cap inlet, optional pre-cleaner
TOP SPEED	19 km/h (12 mph)
COOLING	Side-by-side aluminum radiator, oil cooler Charge air cooler and A/C condenser
FAN	Fixed pitch, blower
▶ Optional	Flexaire® variable pitch, reversing
FUEL CAPACITY usable	255 L (67 US gal)
DEF CAPACITY	46 L (12 US gal)

POWER TRAIN

TRANSMISSION	Single-speed mechanical Variable speed hydrostatic (2) Variable displacement motors
AXLE, FRONT	Differential; Fixed
AXLE, REAR	Differential; Fixed
CENTRE JOINT OSCILLATION	+/-12.5°
DIFFERENTIAL LOCKS	Independent front and rear

HYDRAULIC SYSTEM

PUMP, DRIVE	Piston
PUMP, MAIN	Piston for all machine functions
PUMP, MAIN 2	Gear for cooling
FILTRATION	(4) Spin-on, 7 micron full-flow
CYLINDERS, STEER	(2) 85 mm (3.25 in) bore
CYLINDERS, BLADE	(2) 90 mm (3.5 in) bore
CYLINDERS, BLADE GRAB	(2) 65 mm (2.5 in) bore
CYLINDERS, SHIELD	127 mm (5 in) bore
CYLINDERS, FAIRLEAD	85 mm (3.25 in) bore
RESERVOIR	126 L (33 us gal)

BRAKES

DYNAMIC BRAKING	Hydrostatic
SECONDARY BRAKE	Enclosed, oil cooled
PARK BRAKE	In line; spring applied/hydraulic release

TIRES

STANDARD	24.5x32
OPTIONAL	28Lx26, 30.5Lx32

BLADE

WIDTH	1 580 mm (62 in)
GRAPPLE ARMS max. opening	1 240 mm (49 in)

WINCH

DUAL WINCH	Independently controlled dual drum with movable shield
BARREL DIAMETER	235 mm (9.25 in)
BARREL WIDTH	270 mm (10 5/8 in)
CAPACITY with 14 mm cable	220 m (720 ft)
CAPACITY with 16 mm cable	180 m (590 ft)

SHIELD

WIDTH	2 310 mm (91 in)
TRAVEL	775 mm (31 in)
BELOW GRADE REACH	175 mm (7 in)

FAIRLEAD

TRAVEL	510 mm (20 in)
▶ Optional	Fixed or independent rotating fairleads Optional fairlead light

ELECTRICAL

BATTERY	(2) 12 v
ALTERNATOR	80 amp, 24 v
SYSTEM VOLTAGE	24 v
LIGHTING	(14) LED
▶ Optional	High output LED lighting package (24) LED

OPERATOR'S STATION

CAB	Insulated, pressurized and isolation mounted; A/C, heater, defroster; (2) Doors with slide side windows and hinged screens AM/FM digital stereo with auxiliary input port, Bluetooth® audio and hands-free calling; Tire pressure monitoring system (TPMS) Ventilated cup holder; Phone holder/charger; (2) 12 v power points; Camera system, forward and rearVIEW
SEAT	Extreme duty Turnaround® 220° rotation; Spring applied/hydraulic release rotate locking system; Air ride, heated and cooled; Fully adjustable height, seatback recline, lumbar support and armrests Access to all functions and full drive control from any position
CONTROLS	Electronic joystick for hydraulic and drive functions Electronic foot pedal, front and rear with forward/reverse selector switch for drive functions; Hydraulic controlled axle brakes; Electronic control system with 180 mm (7 in) LCD colour touchscreen for machine monitoring and function adjustment

OTHER STANDARD EQUIPMENT

LogOn™ local WiFi machine monitoring system Alarm for reverse drive; Fire extinguisher

OPTIONAL EQUIPMENT

RemoteLog® telematics system; Blade extensions; Cold weather kit CB radio; SiriusXM® radio ready; Slope indicators; Window blinds; Fire suppression system; Vacuum pump; Optional Factory equipped crane mounting plate to receive Palfinger X130 and X150 series cranes with 3-camera system
--

ALL ENGINE POWER VALUES ARE QUOTED AT NET POWER, AS PER SAE J1349.

TIGERCAT RESERVES THE RIGHT TO AMEND THESE SPECIFICATIONS AT ANY TIME WITHOUT NOTICE. WEIGHTS AND DIMENSIONS MAY VARY SUBJECT TO MACHINE OPTIONS AND CONFIGURATIONS. FOR THE MOST CURRENT SPECIFICATIONS PLEASE REFER TO THE TIGERCAT WEBSITE OR MOBILE APP.

EMAIL	comments@tigercat.com
PHONE	519.753.2000
WEBSITE	www.tigercat.com
ADDRESS	54 Morton Ave. East, Brantford, Ontario Canada, N3R 7J7
MAIL	Box 637 N3T 5P9

© 2001 - 2022 Tigercat International Inc. All Rights Reserved. TIGERCAT, WIDERANGE, TURNAROUND, ER, EHS, LOW-WIDE, TEC, REMOTELOG, and their respective logos, TOUGH RELIABLE PRODUCTIVE, TIGERCAT TV, "Tigercat Orange" and BETWEEN THE BRANCHES, as well as corporate and product identity, are trademarks of Tigercat International Inc., and may not be used without permission. TIGERCAT, TURNAROUND, WIDERANGE, EHS, LOW-WIDE, ER and REMOTELOG, and their respective logos are registered trademarks of Tigercat International Inc.

CV904
612 1.0 1122