

# 920 DOZER



THE TCI 920 DOZER EXCELS IN DEMANDING APPLICATIONS LIKE STUMP REMOVAL AND ROAD BUILDING ON LOGGING OPERATIONS. IT IS SMOOTH AND RESPONSIVE FOR FINAL GRADING ON CONSTRUCTION SITES.

**TCi**®



**PURPOSE-BUILT**

## *GET THE BEST OF BOTH WORLDS*

**Power and durability for tough applications. Finesse and response for fine grading.**

### **Built tough**

- ▶ Durable construction, excellent build quality
- ▶ Heavy-duty impact resistant belly pans
- ▶ Ready for logging applications without additional guarding or modifications



### **ENGINE**

- ▶ Tier 4f Tigercat FPT N45
- ▶ 101 kW (135 hp) @ 2,200 rpm (net)
- ▶ 125 kW (168 hp) @ 2,200 rpm (max)

**PUSHES ABOVE ITS SIZE CLASS**







## Powerful tractive effort

- ▶ Hydrostatic closed-loop track drive system provides powerful tractive effort
- ▶ Heavy-duty oscillating track frames designed for strength and long-term reliability
- ▶ 214 kN (48,300 lbf) maximum drawbar pull

**SIMPLE, YET POWERFUL,  
RESPONSIVE AND EFFICIENT**



**Refined controls,  
smooth operation  
for final grading on  
construction sites.**

## Heavy-duty six-way blade

- ▶ Large hydraulic pump for quick blade movements
- ▶ Robust blade cylinders and large pivot ball for added strength and durability





## FOCUS ON THE OPERATOR

**The TCi 920 dozer provides excellent operator visibility.**

- ▶ Sloped hood allows for clear sightlines and excellent forward visibility
- ▶ Rear-mounted exhaust is strategically placed to prevent obstruction of operator's view
- ▶ Forestry rated polycarbonate windows for operator protection







## Operator comfort on the jobsite

- ▶ Extreme-duty heated and cooled air ride seat
- ▶ Ergonomic armrest mounted joysticks for easy operation
- ▶ Quiet operating environment with insulated and isolation mounted cab



## Designed with servicability in mind

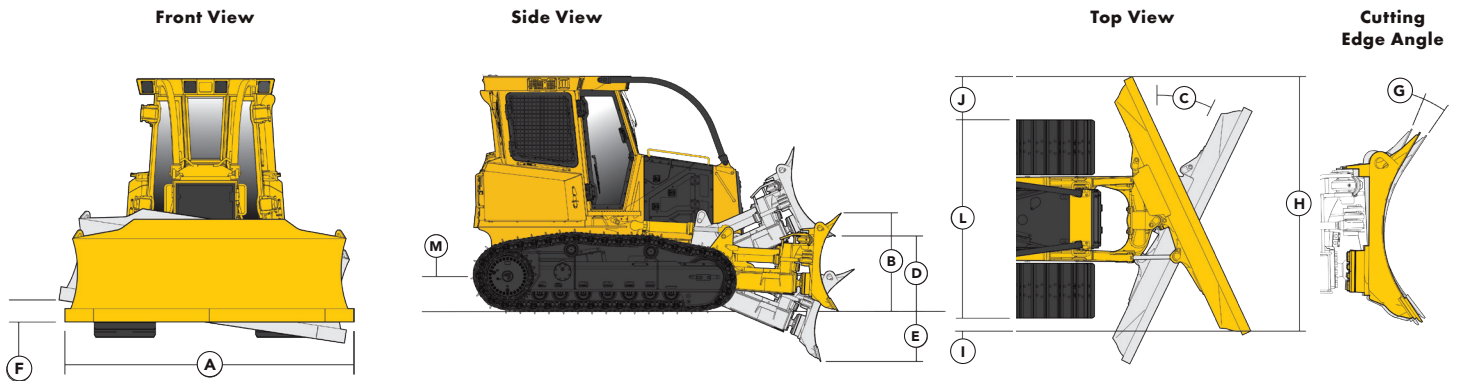
- ▶ Tilting cab for access to major machine components
- ▶ Large swing-out side doors for easy access to filters and daily service points





# BLADE OPTIONS

	STANDARD	INTERMEDIATE	LOW GROUND PRESSURE
WEIGHT	16 330 kg (36,000 lb)	16 460 kg (36,295 lb)	16 915 kg (37,295 lb)
A BLADE WIDTH across endbits	3 175 mm (125 in)	3 355 mm (132 in)	3 685 mm (145 in)
B BLADE HEIGHT	1 310 mm (51.5 in)	1 310 mm (51.5 in)	1 310 mm (51.5 in)
BLADE CAPACITY	3.3 m <sup>3</sup> (4.3 yd <sup>3</sup> )	3.5 m <sup>3</sup> (4.6 yd <sup>3</sup> )	3.9 m <sup>3</sup> (5.1 yd <sup>3</sup> )
C BLADE ANGLE	25°	25°	25°
D LIFT HEIGHT	1 065 mm (42 in)	1 065 mm (42 in)	1 065 mm (42 in)
E DIG DEPTH	535 mm (21 in)	535 mm (21 in)	535 mm (21 in)
F BLADE TILT	455 mm (18 in)	485 mm (19 in)	535 mm (21 in)
G CUTTING EDGE ANGLE (manually adjustable)	55-60°	55-60°	55-60°
H WIDTH across endbits (blade angled 25°)	2 870 mm (113 in)	3 050 mm (120 in)	3 325 mm (131 in)
I CUT REACH	0 mm (0 in)	75 mm (3 in)	125 mm (5 in)
J CAST REACH	355 mm (14 in)	405 mm (16 in)	485 mm (19 in)



# UNDERCARRIAGE OPTIONS

	STANDARD	INTERMEDIATE	LOW GROUND PRESSURE
PAD WIDTH	560 mm (22 in)	600 mm (24 in)	760 mm (30 in)
TRACK GAUGE	2 010 mm (79 in)	2 010 mm (79 in)	2 010 mm (79 in)
L WIDTH over tracks	2 565 mm (101 in)	2 615 mm (103 in)	2 770 mm (109 in)
TRACK SHOES each side	40	40	40
TRACK ROLLERS each side	7	7	7
TRACK LENGTH on ground	2 605 mm (103 in)	2 605 mm (103 in)	2 605 mm (103 in)
GROUND CONTACT AREA (m <sup>2</sup> , in <sup>2</sup> )	3,25 m <sup>2</sup> (5,050 in <sup>2</sup> )	3,49 m <sup>2</sup> (5,410 in <sup>2</sup> )	4,42 m <sup>2</sup> (6,850 in <sup>2</sup> )
GROUND PRESSURE (psi, kPa)	7.1 psi (49 kPa)	6.7 psi (46 kPa)	5.4 psi (38 kPa)
M GROUND CLEARANCE (in dirt)	395 mm (15.5 in)	395 mm (15.5 in)	395 mm (15.5 in)



# REAR ATTACHMENTS

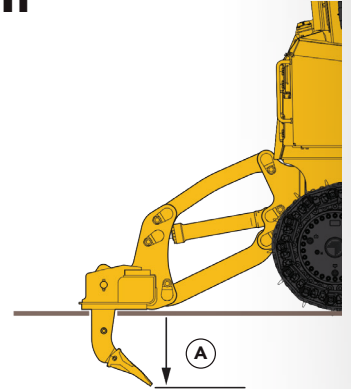
## RIPPER ATTACHMENT



### A 2-barrel parallelogram design with 3 pockets and shanks

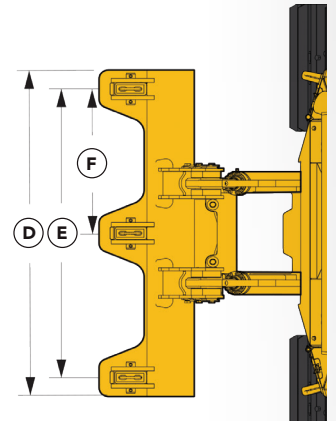
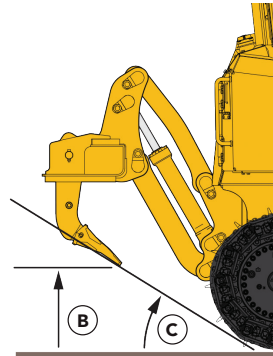
Robust design, optimized for heavy-duty applications

- ▶ Generous sized shanks and teeth
- ▶ Penetration tooth is standard  
Optional centreline teeth are available
- ▶ High ground clearance is maintained with high departure angle
- ▶ Designed to deliver high pry-out and penetration forces



### RIPPER

TYPE	Parallelogram
WEIGHT	1 360 kg (3,000 lb)
NUMBER OF POCKETS	3
A MAXIMUM PENETRATION	535 mm (21 in)
B MAXIMUM LIFT HEIGHT	535 mm (21 in)
C DEPARTURE ANGLE	28°
D OVERALL BEAM WIDTH	1 980 mm (78 in)
E SHANK GAUGE	1 725 mm (68 in)
F POCKET SPACING	865 mm (34 in)

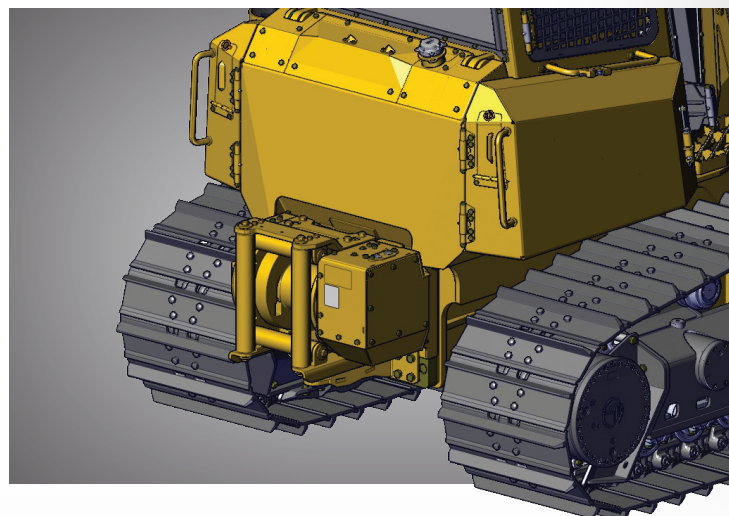


## RECOVERY WINCH

### Have piece of mind with the optional recovery winch

Reel in and out, manual freespool, drawbar and 4 roller fairlead

- ▶ 18 145 kg (40,000 lb) line pull with 19 mm (¾ in) cable
- ▶ Maximum speed of 25 m/min (84 ft/min) with 19 mm (¾ in) cable



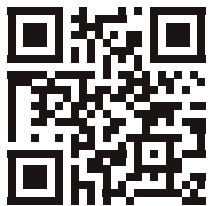
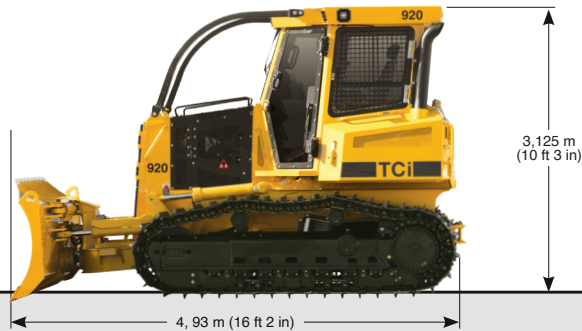


## GET TO KNOW IT



## STANDARD

**920 DOZER** **Power:** 101 kW (135 hp) @ 2,200 rpm (net)  
 125 kW (168 hp) @ 2,200 rpm (max)  
**Weight:** 16 330 kg (36,000 lb)  
**Blade:** 6-way, power angle tilt



Scan the QR code then click 'SPECS'  
 for a full list of machine specifications  
 for the 920 dozer

**Visit [tigercat.com](http://tigercat.com) to access the most current  
 machine specifications for all TCI machine models.**

TCi branded machines are built and supported by Tigercat Industries Inc.

<b>EMAIL</b>	comments@tigercat.com
<b>PHONE</b>	519.753.2000
<b>WEBSITE</b>	www.tigercat.com
<b>ADDRESS</b>	54 Morton Ave. East, Brantford, Ontario Canada, N3R 7J7
<b>MAIL</b>	Box 637 N3T 5P9

TCi, WIDERANGE, TURNAROUND, ER, EHS, LOW-WIDE, TEC, REMOTELOG and their respective logos, TOUGH RELIABLE PRODUCTIVE, TCI TV, "TCi Orange" and BETWEEN THE BRANCHES, as well as corporate and product identity, are trademarks of Tigercat International Inc., and may not be used without permission. TCI, TURNAROUND, WIDERANGE, EHS, LOW-WIDE, ER and REMOTELOG, and their respective logos are registered trademarks of Tigercat International Inc.