

# 6500 CHIPPER



A HIGH CAPACITY DOWN-SWING CHIPPER FOR  
CONSISTENT QUALITY CHIP PRODUCTION.

**Tigercat®**  
Tough • Reliable • Productive

# PRODUCTIVE, VERSATILE AND EASY TO OPERATE.



## THE TIGERCAT 6500 IS A HEAVY DUTY DRUM CHIPPER DESIGNED FOR HIGH THROUGHPUT AND REDUCED KNIFE WEAR.

- ▶ Perfect solution for anything from forest management and fuel chips to demolition debris
- ▶ Extremely versatile with the ability to be configured as a chipper or grinder
- ▶ Two rotor options available: a four-pocket rotor producing chips 12 - 22 mm (1/2 - 7/8 in) and a three-pocket rotor for chips measuring 30 - 40 mm (1 3/16 - 1 9/16 in)
- ▶ Adjustable infeed angle allows easy and productive feeding of both long and short material
- ▶ An optional large diameter magnetic head pulley is available for effective metal removal from the end product
- ▶ A simple remote control drive system provides easy mobility onsite
- ▶ Equipped with an easy-to-use touchscreen for machine monitoring and function adjustment
- ▶ Heavy duty pivoting track frames eliminate the need for folding discharge for transport





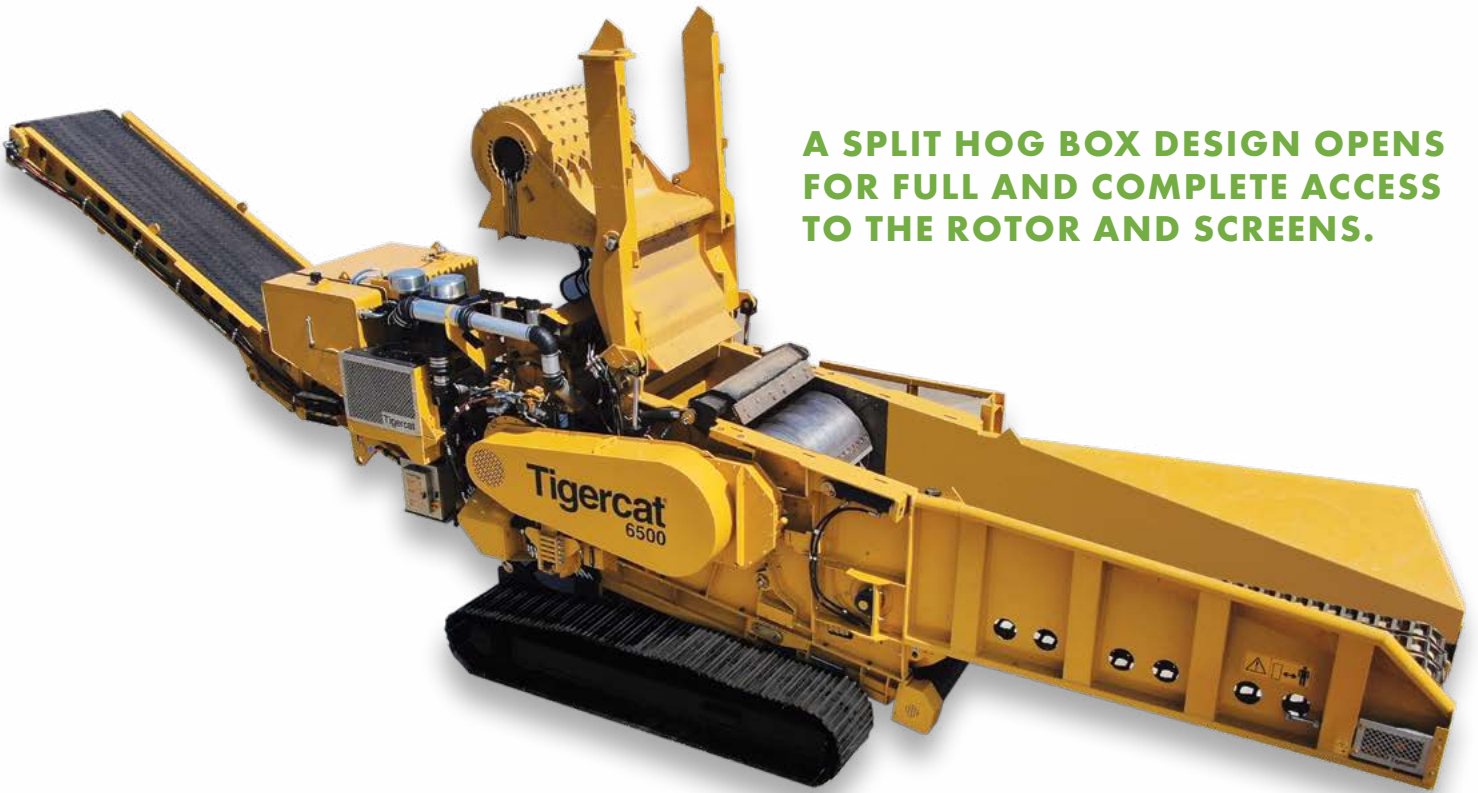


**Remote control for easy machine functionality.**



**The large magnetic head pulley for tramp metal removal.**





**A SPLIT HOG BOX DESIGN OPENS FOR FULL AND COMPLETE ACCESS TO THE ROTOR AND SCREENS.**





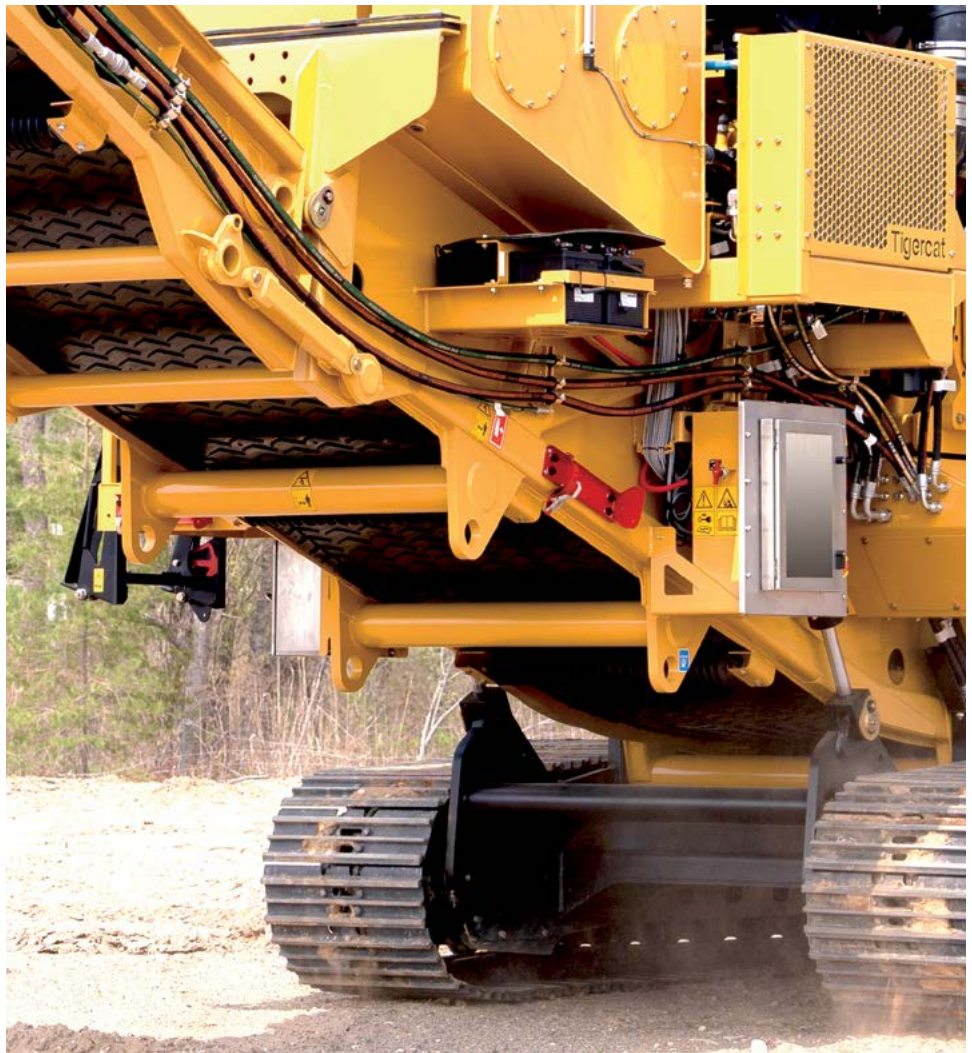
### CONVENIENT SERVICE ACCESS.

- ▶ A split hog box design opens for full and complete access to the rotor and screens
- ▶ The anvils and screens are hydraulically retractable for easy maintenance
- ▶ The single discharge conveyor is open on the bottom for clean operation and easy servicing
- ▶ Filters and electrical access are centrally located for simple maintenance
- ▶ A tool storage area mounted on the side of the machine hydraulically raises and lowers for added convenience

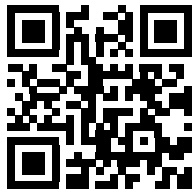
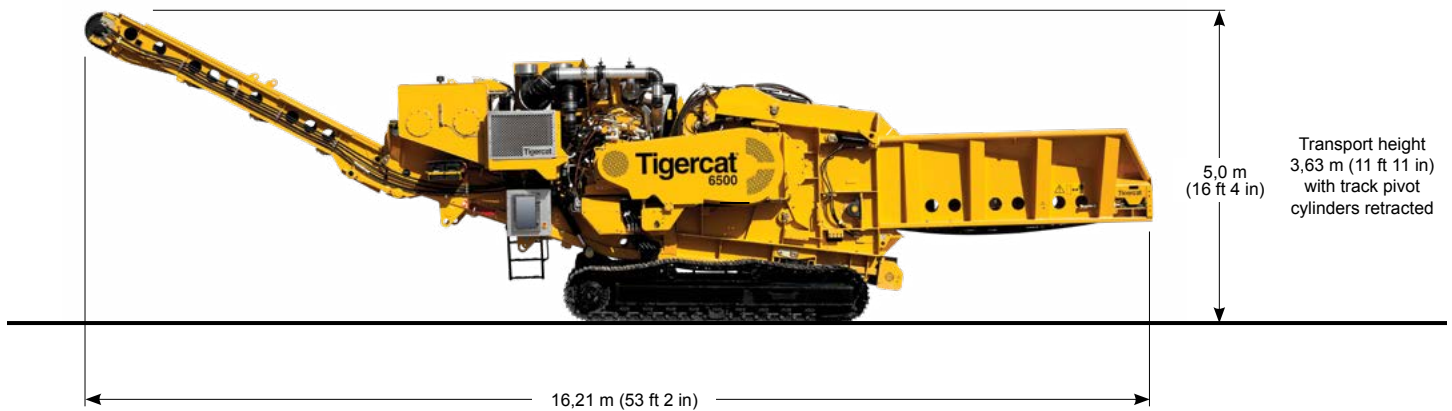


**Toolbox that hydraulically raises and lowers.**

**THE ENTIRE  
UNDERSIDE OF  
THE DISCHARGE  
CONVEYOR  
IS OPEN TO  
PREVENT  
BUILD UP OF  
MATERIAL.**



## 6500 CHIPPER



Scan the QR code then click 'SPECS' for a full list of machine specifications for the 6500 Chipper.

**Download the Tigercat App or visit [tigercat.com](https://www.tigercat.com) to access the most current machine specifications for all Tigercat machine models.**

EMAIL	comments@tigercat.com
PHONE	519.753.2000
WEBSITE	www.tigercat.com
ADDRESS	54 Morton Ave. East, Brantford, Ontario Canada, N3R 7J7
MAIL	Box 637 N3T 5P9

© 2001 - 2024 Tigercat International Inc. All Rights Reserved. TIGERCAT, WIDERANGE, TURNAROUND, ER, EHS, LOW-WIDE, TEC, REMOTELOG, and their respective logos, TOUGH RELIABLE PRODUCTIVE, TIGERCAT TV, "Tigercat Orange" and BETWEEN THE BRANCHES, as well as corporate and product identity, are trademarks of Tigercat International Inc., and may not be used without permission. TIGERCAT, TURNAROUND, WIDERANGE, EHS, LOW-WIDE, ER and REMOTELOG, and their respective logos are registered trademarks of Tigercat International Inc.