

1055D FORWARDER



A HEAVY-DUTY 15-TONNE FORWARDER, BUILT FOR TOUGH TERRAIN,
SELECTIVE LOGGING APPLICATIONS, AND LONG-TERM DURABILITY.

TCi®

The 1055D forwarder combines durable construction with a refined operating experience. Excellent visibility to the tires and work area, and smooth, ergonomic controls reduce operator fatigue and increase productivity.

KEY BENEFITS

- ▶ Best-in-class visibility upward to the work zone, and downward to the tires
- ▶ Narrow spread balanced bogie axles for best performance in tight, thinning conditions and hilly terrain
- ▶ Wagon frame mounted oscillation joint for excellent stability when turning and operating on slopes
- ▶ Two hydrostatic transmission options. WideRANGE for high tractive effort and full speed range availability, or 2-speed mechanical shift for greater top speed
- ▶ Long life centre section is equipped with tapered roller bearings in the articulation and oscillation joints
- ▶ Heavy-duty TCi construction for demanding forwarding applications



STRONG AND STABLE

- ▶ The wagon frame mounted oscillation promotes greater stability and freedom to extend the crane while travelling for productivity gains.
- ▶ Strong frames, right-sized pins, high-quality cylinders, and tapered roller bearings in the centre section contribute to greater machine longevity and uptime.



Well-engineered structural components reduce downtime and extend machine life. The wagon frame and gate system is highly configurable for a wide range of applications.



ADJUSTABLE LOAD AREA

- ▶ The 1055D load space offers exceptional versatility with three different load lengths. Fixed-width or expandable bunk and gate systems provide additional customization, enhancing the flexibility of the 1055D to operate in various applications. The 1055D is also equipped with a hydraulic lifting gate which speeds up loading and unloading times.

EASY ACCESS

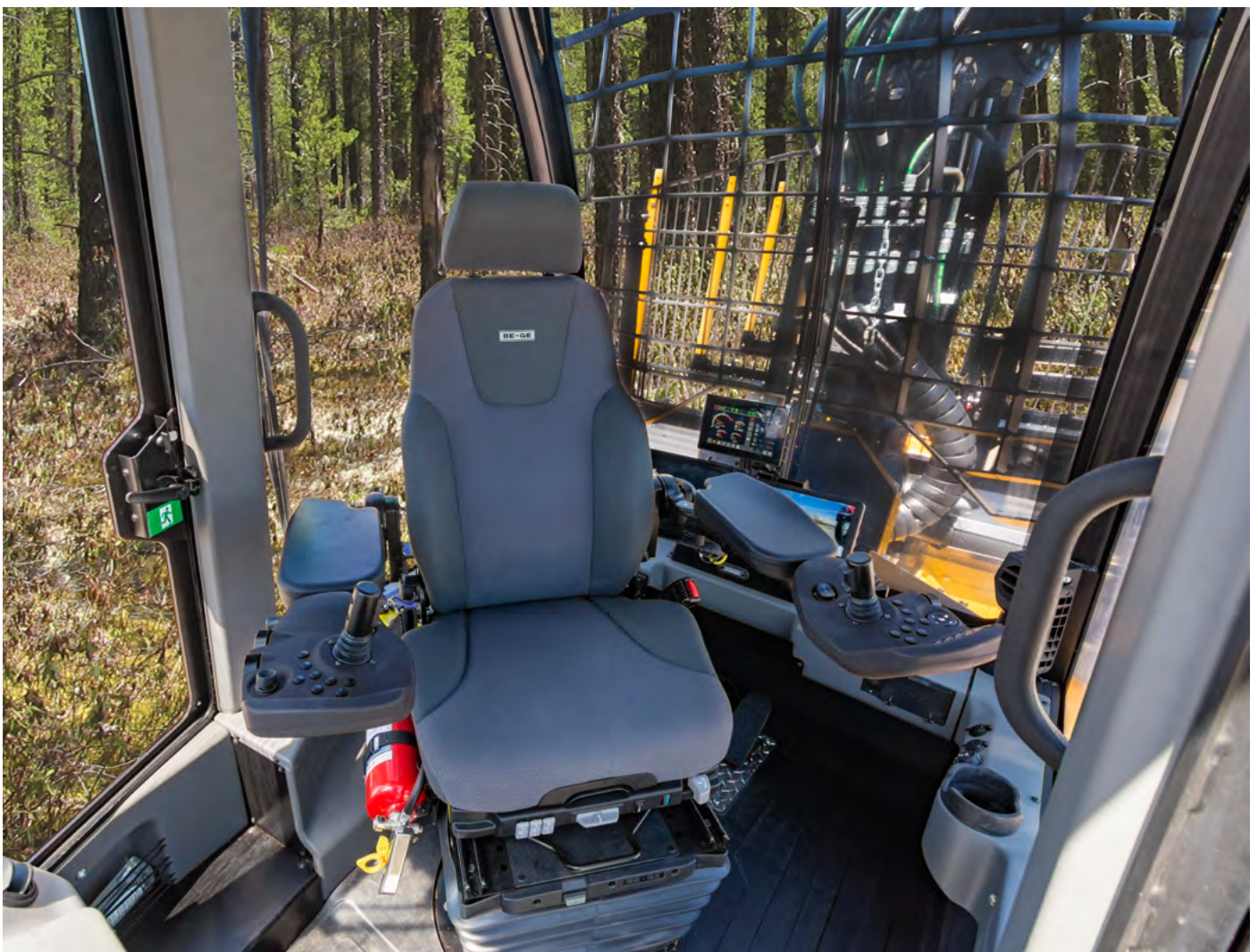
- ▶ Excellent component layout and easy access to service points make daily maintenance routines quick and painless. The power tilting engine house opens to provide a work platform inside. The side-mounted work platform allows the operator to access the side of the engine enclosure and safely reach the front platform from the ground via the ladder or directly from the cab. A centre-mounted access ladder makes refueling easier.



The operator station is designed for optimal visibility and comfort, reducing fatigue and enhancing productivity in tight, challenging terrain.

KEY FEATURES INCLUDE:

- ▶ Excellent upward visibility provided by a curved rear window and high side windows.
- ▶ A spacious cabin interior with ample legroom in all directions.
- ▶ Window blinds, a sun visor, climate control for constant temperature, and window wipers ensure a comfortable and productive working environment in any weather condition.
- ▶ The seat is equipped with durable air ride suspension, heating, and complete adjustability for height, position, and lumbar support.
- ▶ The seat rotator features a heavy-duty electric brake that locks the seat in any position.
- ▶ An optional high-capacity suspension seat with heating and cooling is available for added comfort.
- ▶ The cab is office-ready, equipped with USB-C and 12-volt power points, along with Bluetooth® hands-free audio.





OPERATOR CONTROLS

- ▶ The joysticks are built into multifunction control pods designed for maximum comfort and convenience for the operator. These low-effort control pods improve productivity during long shifts and challenging operating conditions.

Three travel speed presets are available to customize the drive characteristics of the machine to changing conditions and operator preferences.

- ▶ Two presets limit the top speed to different degrees, allowing the operator to adjust the engine and travel speed independently, providing precise control. A third preset provides the full travel speed range. The drive system logic determines the optimal engine speed based on the operator's desired travel speed.



SPECIFICATIONS

1055D

DIMENSIONS

LENGTH	9 930 mm (391 in)
▶ With optional 2500/2400	10 430 mm (411 in)
▶ With optional 3100/2400	11 030 mm (435 in)
WHEELBASE	5 300 mm (209 in)
▶ With optional 2500/2400	5 300 mm (209 in)
▶ With optional 3100/2400	5 900 mm (232 in)
WIDTH	2 940 mm (116 in)
HEIGHT	3 800 mm (149 in)
GROUND CLEARANCE, with standard tires	710 mm (28 in)
WEIGHT	20 800 kg (45,850 lb)

POWER

ENGINE Stage V	Tigercat FPT N67 164 kW (220 hp) @ 2,100 rpm (rated); 170 kW (228 hp) @ 1,800 rpm (peak)
ENGINE Tier 2	Tigercat FPT N67 159 kW (213 hp) @ 2,100 rpm (rated); 165 kW (221 hp) @ 1,900 rpm (peak)
ENGINE Non-certified	Tigercat FPT N67 159 kW (213 hp) @ 2,100 rpm (rated); 165 kW (221 hp) @ 1,900 rpm (peak)
AIR FILTRATION	2-stage engine air cleaner
COOLING	Side-by-side aluminum radiator, oil cooler, charge air cooler, condenser
FAN	Engine driven, variable pitch with reversing cycle
FUEL CAPACITY usable	200 L (53 US gal)
▶ Optional	26 L (7 US gal)

POWER TRAIN

TRANSMISSION	2-Speed hydrostatic mechanical; Piston motor, infinitely variable
▶ Optional	WideRANGE® drive; Variable speed hydrostatic; (2) Piston motors, infinitely variable
AXLES FRONT/REAR	15 t (16 tn) balanced bogie
DIFFERENTIAL LOCKS	Independent front and rear, friction clutch style; Engage while travelling
TOP SPEED	Low range: 6 km/h 3.7 mph high range: 18,5 km/h 11.5 mph
TOP SPEED With optional transmission	11,4 km/h 7 mph

HYDRAULIC SYSTEM

PUMP, DRIVE	Piston, closed loop
PUMP, MAIN	Piston
FILTRATION	(1) In-tank, 10 micron full flow
CYLINDERS, STEER	(2) 80 mm (3.15 in) bore
CYLINDERS, BLADE	(2) 95 mm (3.75 in) bore
RESERVOIR	140 L (37 US gal)

BRAKES

SECONDARY BRAKE	Enclosed, oil cooled
PARK BRAKE	Enclosed, oil cooled; Spring applied
SERVICE BRAKE	Hydrostatic enclosed, oil cooled

TIRES

FRONT/REAR	710/45x26.5
------------	-------------

CRANE

STANDARD	Mesera M92FT100i with double telescope stick
REACH	10 m (32 ft 10 in)
LIFT TORQUE gross	130 kN-m (95,885 lbf-ft)
SLEW TORQUE gross	39 kN-m (28,765 lbf-ft)
▶ Optional	Palfinger X140F105 with double telescopic stick
REACH	10,5 m (34 ft 6 in)
LIFT TORQUE gross	159 kN-m (117,270 lbf-ft)
SLEW TORQUE gross	45 kN-m (33,190 lbf-ft)

GRAPPLE

STANDARD	Hultdins SG260S
▶ Optional	Hultdins SG300S; Hultdins SG360; Hultdins SG360S
ROTATOR	Indexator GV12 (Mesera crane)
▶ Optional	Indexator GV17 (Palfinger crane)

WAGON FRAME

CAPACITY	15 000 kg (33,069 lb)
STANDARD 2500/1900	Load length 4 400 mm (173 in)
▶ Optional 2500/2400	Load length 4 900 mm (193 in)
▶ Optional 3100/2400	Load length 5 500 mm (216 in)

BUNK SYSTEM	
STANDARD	Level load, fixed
► WIDTH	2,92 m (9 ft 7 in)
► LOAD AREA	4,8 m ² (52 ft ²)
► GATE	Vertical lifting, fixed width
OPTIONAL	Level load, telescopic
► WIDTH minimum	2,92 m (9 ft 7 in)
► LOAD AREA minimum	4,8 m ² (52 ft ²)
► WIDTH maximum	3,23 m (10 ft 7 in)
► LOAD AREA maximum	5,3 m ² (57 ft ²)
► GATE	Vertical lifting; Expandable, swing-out
ELECTRICAL	
BATTERY	(2) 1400 CCA, 12 v
ALTERNATOR	140 amp, 24 v
SYSTEM VOLTAGE	24 v
LIGHTING	Multiple work light modes; (20) LED (2) LED service lights
OPERATOR'S STATION	
CAB	Insulated and isolation mounted; Pressurized constant temperature A/C and heater; Window blinds; Pull-down rear sun visor; Front/rear wipers and washers; Emergency exit window; Rear cab guard; AM/FM digital stereo and auxiliary input port USB-C, 12V power point, phone holder Bluetooth® audio and hands-free calling; Cooler storage
SEAT	Air ride extreme duty suspension; Heated; Rotating with high torque electric lock in any position; Fully adjustable seat height and fore/aft, seatback recline and lumbar support, head rest; Adjustable armrests; Armrest mounted TCi joysticks and control pods
► Optional	Air ride extreme duty, high capacity suspension; Heated and cooled; Rotating with high torque electric lock in any position; Fully adjustable seat height and fore/aft, seatback recline and air powered variable lumbar support, seat pan fore/aft and tilt, head rest Adjustable armrests; Armrest mounted TCi joysticks and control pods
OPERATOR CONTROLS	Ergonomic mini-joystick pods for steering, crane, grapple, blade functions; (2) Foot pedals for brake and speed control; Electronic control system with rear-mounted LCD colour touchscreen for machine monitoring and function adjustment
OTHER STANDARD EQUIPMENT	
	LogOn™ local wifi machine monitoring system; Power tilting engine enclosure; Power tilting cab; Power operated ladder; Fuel/water separator; Forestry-duty steel panels and covers; Cylinder oscillation locks; Towing hitch Front recovery lugs; Vacuum pump Centre mounted service access ladder
OPTIONAL EQUIPMENT	
	RemoteLog® telematics system; F30 productivity monitoring system; Hydraulic sliding gate; Diesel powered coolant heater; Electric fuel fill pump, 24 v; Engine block heater, 120 v (North America only); Biodegradable hydraulic oil; Side window wipers; Roading package with lights, mirrors, and turn signals; Front-mounted LCD colour touchscreen; Camera system, front/rearVIEW; 4-Point seatbelt (available for optional seat only); Four way isolator seat suspension mounting plate; Semi-active seat suspension base (available for optional seat only); Blade; Telescoping tail extension (2400 wagon frame only); Tire pressure monitoring system (TPMS); SiriusXM satellite radio (North America only); Fire suppression system; Booster cables; Spare wheel assembly; Food heater

ALL ENGINE POWER VALUES ARE QUOTED AT NET POWER, AS PER SAE J1349.

TIGERCAT INDUSTRIES RESERVES THE RIGHT TO AMEND THESE SPECIFICATIONS AT ANY TIME WITHOUT NOTICE. WEIGHTS AND DIMENSIONS MAY VARY SUBJECT TO MACHINE OPTIONS AND CONFIGURATIONS. FOR THE MOST CURRENT SPECIFICATIONS PLEASE REFER TO THE TCI WEBSITE OR MOBILE APP.



1055D FORWARDER



Shown with optional 2500/2400 wagon frame

EMAIL	comments@tigercat.com
PHONE	519.753.2000
WEBSITE	www.tigercat.com
ADDRESS	54 Morton Ave. East, Brantford, Ontario Canada, N3R 7J7
MAIL	Box 637 N3T 5P9

TCi, WIDERANGE, TURNAROUND, ER, EHS, LOW-WIDE, TEC, REMOTELOG and their respective logos, TOUGH RELIABLE PRODUCTIVE, TCI TV, "TCi Orange" and BETWEEN THE BRANCHES, as well as corporate and product identity, are trademarks of Tigercat International Inc., and may not be used without permission. TCI, TURNAROUND, WIDERANGE, EHS, LOW-WIDE, ER and REMOTELOG, and their respective logos are registered trademarks of Tigercat International Inc.