

# 1055D FORWARDER



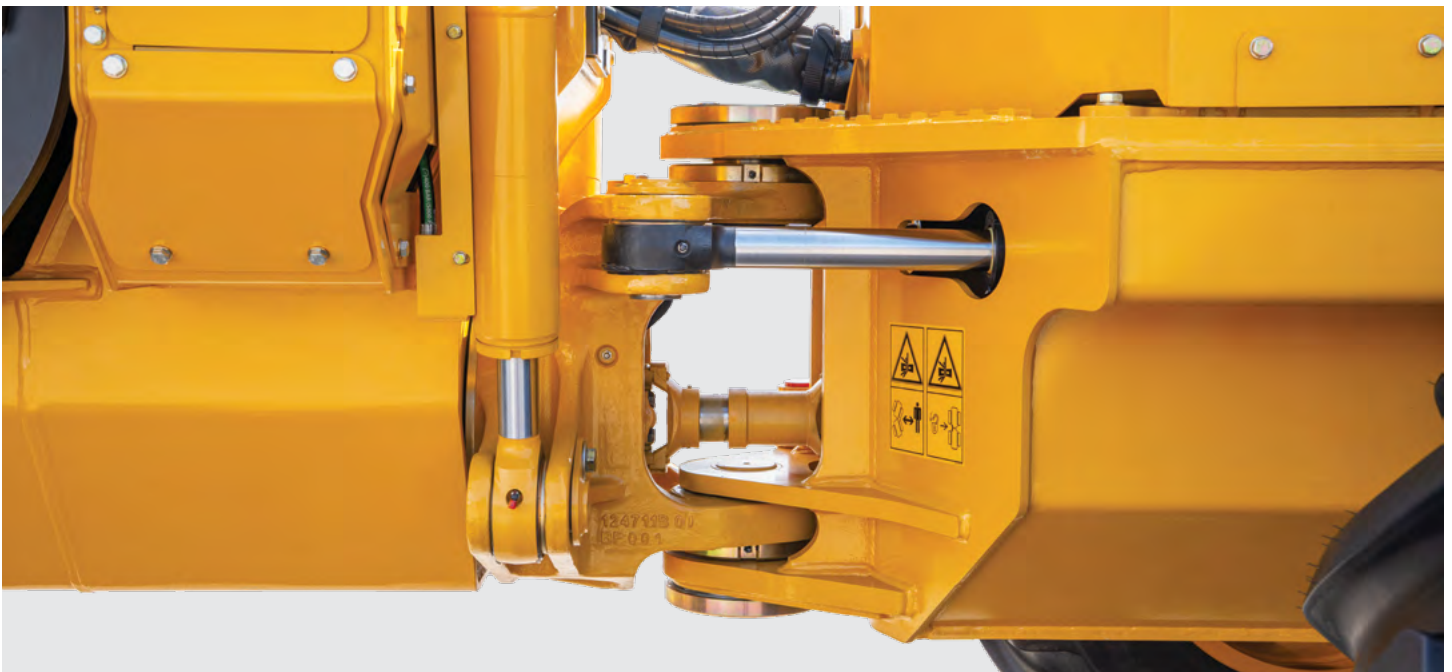
A HEAVY-DUTY 15-TONNE FORWARDER, BUILT FOR TOUGH TERRAIN,  
SELECTIVE LOGGING APPLICATIONS, AND LONG-TERM DURABILITY.

**Tigercat®**  
Tough • Reliable • Productive

**The 1055D forwarder combines durable construction with a refined operating experience. Excellent visibility to the tires and work area, and smooth, ergonomic controls reduce operator fatigue and increase productivity.**

### KEY BENEFITS

- ▶ Best-in-class visibility upward to the work zone, and downward to the tires
- ▶ Narrow spread balanced bogie axles for best performance in tight, thinning conditions and hilly terrain
- ▶ Wagon frame mounted oscillation joint for excellent stability when turning and operating on slopes
- ▶ Two hydrostatic transmission options. WideRANGE for high tractive effort and full speed range availability, or 2-speed mechanical shift for greater top speed
- ▶ Long life centre section is equipped with tapered roller bearings in the articulation and oscillation joints
- ▶ Heavy-duty Tigercat construction for demanding forwarding applications



### STRONG AND STABLE

- ▶ The wagon frame mounted oscillation promotes greater stability and freedom to extend the crane while travelling for productivity gains.
- ▶ Strong frames, right-sized pins, high-quality cylinders, and tapered roller bearings in the centre section contribute to greater machine longevity and uptime.



**Well-engineered structural components reduce downtime and extend machine life. The wagon frame and gate system is highly configurable for a wide range of applications.**



## **ADJUSTABLE LOAD AREA**

- ▶ The 1055D load space offers exceptional versatility with three different load lengths. Fixed-width or expandable bunk and gate systems provide additional customization, enhancing the flexibility of the 1055D to operate in various applications. The 1055D is also equipped with a hydraulic lifting gate which speeds up loading and unloading times.

## **EASY ACCESS**

- ▶ Excellent component layout and easy access to service points make daily maintenance routines quick and painless. The power tilting engine house opens to provide a work platform inside. The side-mounted work platform allows the operator to access the side of the engine enclosure and safely reach the front platform from the ground via the ladder or directly from the cab. A centre-mounted access ladder makes refueling easier.

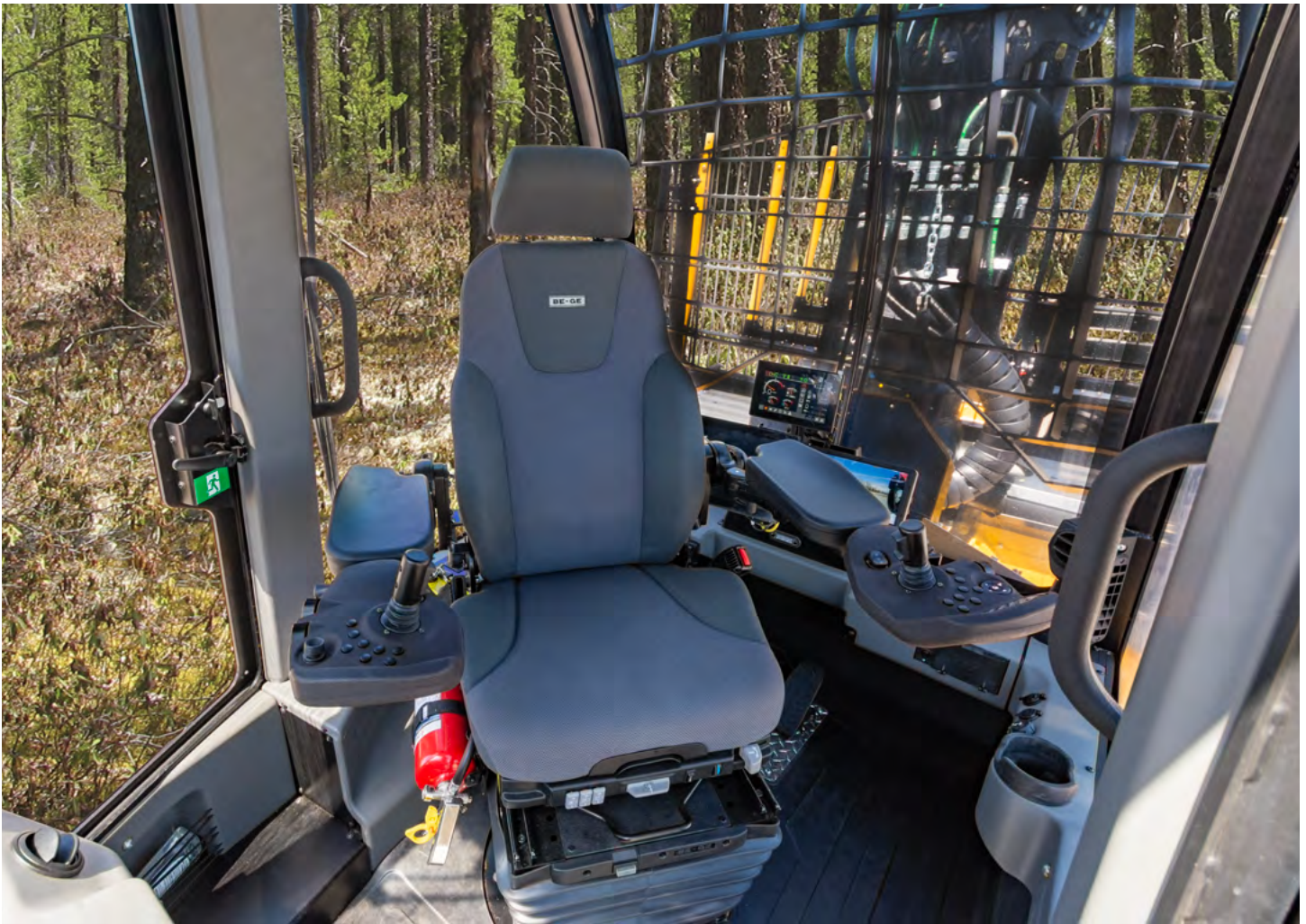




**The operator station is designed for optimal visibility and comfort, reducing fatigue and enhancing productivity in tight, challenging terrain.**

### KEY FEATURES INCLUDE:

- ▶ Excellent upward visibility provided by a curved rear window and high side windows.
- ▶ A spacious cabin interior with ample legroom in all directions.
- ▶ Window blinds, a sun visor, climate control for constant temperature, and window wipers ensure a comfortable and productive working environment in any weather condition.
- ▶ The seat is equipped with durable air ride suspension, heating, and complete adjustability for height, position, and lumbar support.
- ▶ The seat rotator features a heavy-duty electric brake that locks the seat in any position.
- ▶ An optional high-capacity suspension seat with heating and cooling is available for added comfort.
- ▶ The cab is office-ready, equipped with USB-C and 12-volt power points, along with Bluetooth® hands-free audio.







## OPERATOR CONTROLS

- ▶ The joysticks are built into multifunction control pods designed for maximum comfort and convenience for the operator. These low-effort control pods improve productivity during long shifts and challenging operating conditions.

**Three travel speed presets are available to customize the drive characteristics of the machine to changing conditions and operator preferences.**

- ▶ Two presets limit the top speed to different degrees, allowing the operator to adjust the engine and travel speed independently, providing precise control. A third preset provides the full travel speed range. The drive system logic determines the optimal engine speed based on the operator's desired travel speed.



## 1055D FORWARDER



Shown with optional 2500/2400 wagon frame



Scan the QR code then click 'SPECS' for a full list of machine specifications for the 1055D Forwarder.

**Download the Tigercat Industries App to access the most current machine specifications for all Tigercat and TCi machine models.**

EMAIL	comments@tigercat.com
PHONE	519.753.2000
WEBSITE	www.tigercat.com
ADDRESS	54 Morton Ave. East, Brantford, Ontario Canada, N3R 7J7
MAIL	Box 637 N3T 5P9

© 2001 - 2025 Tigercat International Inc. All Rights Reserved. TIGERCAT, WIDERANGE, TURNAROUND, ER, EHS, LOW-WIDE, TEC, REMOTELOG, LOGON, TCI, and their respective logos, TOUGH RELIABLE PRODUCTIVE, TIGERCAT TV, "Tigercat Orange" and BETWEEN THE BRANCHES, as well as corporate and product identity, are trademarks of Tigercat International Inc., and may not be used without permission. TIGERCAT, TCI, TURNAROUND, WIDERANGE, EHS, LOW-WIDE, ER and REMOTELOG, and their respective logos are registered trademarks of Tigercat International Inc.